

## Anti-Next to BRCA1 gene 1 protein NBR1 Monoclonal Antibody

Catalog Number: M03534

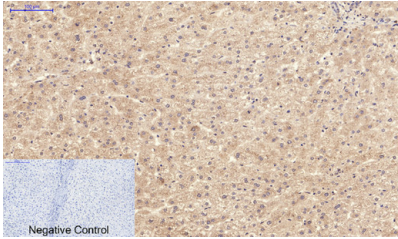
### Overview

Product Name	Anti-Next to BRCA1 gene 1 protein NBR1 Monoclonal Antibody
Reactive Species	Human, Mouse, Rat
Description	Boster Bio Anti-Next to BRCA1 gene 1 protein NBR1 Monoclonal Antibody catalog # M03534. Tested in ELISA, WB applications. This antibody reacts with Human, Mouse, Rat.
Application	IF, IHC
Clonality	Monoclonal 6A12-C8
Formulation	Liquid in PBS containing 50% glycerol, 0.5% stabilizing protein and 0.02% sodium azide. This antibody is supplied in a stabilized formulation. Compatibility with conjugation reactions depends on the chemistry of the conjugation method used. For conjugation methods that are not compatible with the stabilizing components present in this formulation, a carrier-free antibody format is required.
Storage Instructions	Store at -20°C for one year. For short term storage and frequent use, store at 4°C for up to one month. Avoid repeated freeze-thaw cycles.
Host	Mouse
Uniprot ID	Q14596

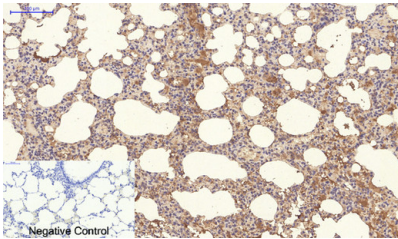
### Technical Details

Immunogen	Recombinant Protein of NBR1
Cross Reactivity	No cross reactivity with other proteins.
Isotype	IgG
Form	Liquid
Concentration	1 mg/ml
Purification	The antibody was affinity-purified from rabbit antiserum by affinity-chromatography using epitope-specific immunogen.
Suggested Dilutions	IF 1:50-200 IHC 1:50-300

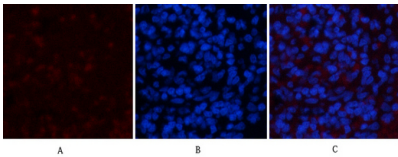
## Anti-Next to BRCA1 gene 1 protein NBR1 Monoclonal Antibody (M03534) Images



Immunohistochemical analysis of paraffin-embedded Human-liver tissue. 1, NBR1 Mouse Monoclonal Antibody (7C3) was diluted at 1:200 (4°C, overnight). 2, Sodium citrate pH 6.0 was used for antibody retrieval (>98°C, 20min). 3, Secondary antibody was diluted at 1:200 (room temperature, 30min). Negative control was used by secondary antibody only.



Immunohistochemical analysis of paraffin-embedded Rat-lung tissue. 1, NBR1 Mouse Monoclonal Antibody (7C3) was diluted at 1:200 (4°C, overnight). 2, Sodium citrate pH 6.0 was used for antibody retrieval (>98°C, 20min). 3, Secondary antibody was diluted at 1:200 (room temperature, 30min). Negative control was used by secondary antibody only.



Immunofluorescence analysis of rat-spleen tissue. 1, NBR1 Mouse Monoclonal Antibody (7C3) (red) was diluted at 1:200 (4°C, overnight). 2, Cy3 labeled Secondary antibody was diluted at 1:300 (room temperature, 50min). 3, Picture B: DAPI (blue) 10min. Picture A: Target. Picture B: DAPI. Picture C: merge of A+B

### Submit a product review to [Biocompare.com](https://www.biocompare.com)

Submit a review of this product to [Biocompare.com](https://www.biocompare.com) to receive a \$20 Amazon.com giftcard! Your reviews help your fellow scientists make the right decisions. Thank you for your contribution.



Anti-Next to BRCA1 gene 1 protein NBR1 Monoclonal Antibody

For Research Use Only. Not for use in diagnostic procedures.