

Anti-XLF (NHEJ1) Mouse Monoclonal Antibody [Clone ID: OTI3D6]

Catalog Number: M03552

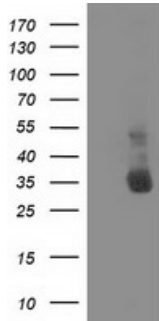
Overview

Product Name	Anti-XLF (NHEJ1) Mouse Monoclonal Antibody [Clone ID: OTI3D6]
Reactive Species	Human, Monkey
Description	Boster Bio NHEJ1 (XLF) mouse monoclonal antibody, clone OTI3D6 (formerly 3D6). Catalog# M03552. Tested in FC, IF, IHC, WB. This antibody reacts with Human, Monkey.
Application	Flow Cytometry, IF, IHC, WB
Clonality	Monoclonal OTI3D6
Formulation	PBS (PH 7.3) containing 1% BSA, 50% glycerol and 0.02% sodium azide.
Storage Instructions	Store at -20°C as received.
Host	Mouse
Uniprot ID	Q9H9Q4

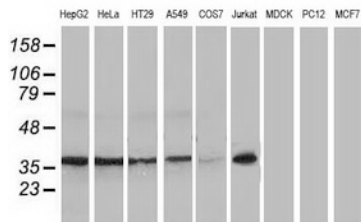
Technical Details

Immunogen	Full length human recombinant protein of human NHEJ1 (NP_079058) produced in HEK293T cell.
Isotype	IgG1
Concentration	0.52 mg/ml
Purification	Purified from mouse ascites fluids or tissue culture supernatant by affinity chromatography (protein A/G)
Suggested Dilutions	Dilute the sample so that the expected range of concentrations fall within the detection range of this kit. If the expected range of concentration is unknown, a pilot test should be conducted to decide the optimal dilution ratio for your samples. Some PubMed article(s) citing the expression level of this target are as follows:

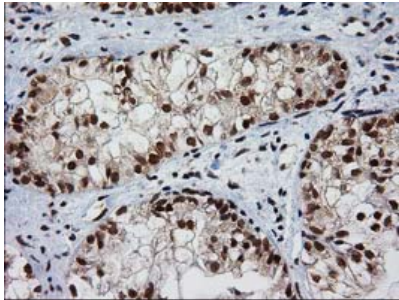
Anti-XLF (NHEJ1) Mouse Monoclonal Antibody [Clone ID: OTI3D6] (M03552) Images



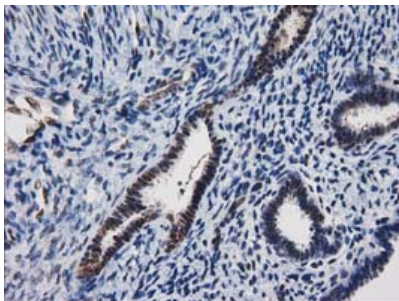
HEK293T cells were transfected with the pCMV6-ENTRY control (Left lane) or pCMV6-ENTRY NHEJ1 (Right lane) cDNA for 48 hrs and lysed. Equivalent amounts of cell lysates (5 ug per lane) were separated by SDS-PAGE and immunoblotted with anti-NHEJ1.



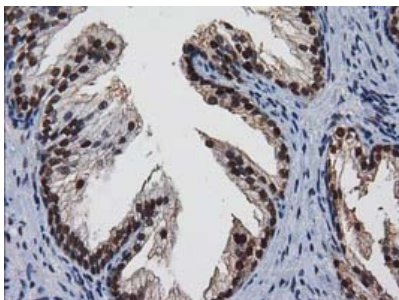
Western blot analysis of extracts (35ug) from 9 different cell lines by using anti-NHEJ1 monoclonal antibody.



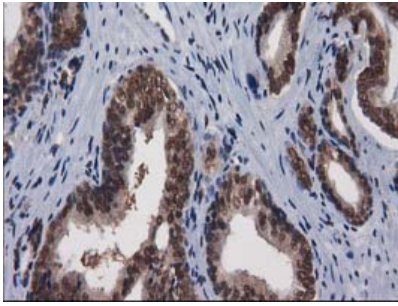
Immunohistochemical staining of paraffin-embedded Adenocarcinoma of Human ovary tissue using anti-NHEJ1 mouse monoclonal antibody. (Heat-induced epitope retrieval by 10mM citric buffer)



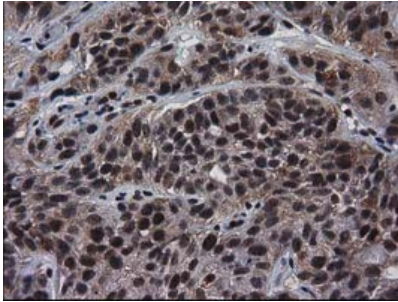
Immunohistochemical staining of paraffin-embedded Human endometrium tissue within the normal limits using anti-NHEJ1 mouse monoclonal antibody. (Heat-induced epitope retrieval by 10mM citric buffer)



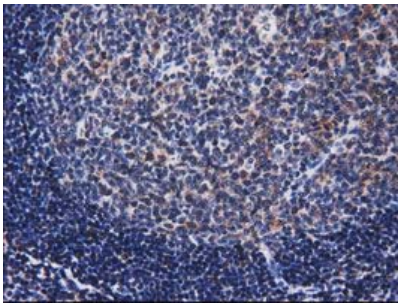
Immunohistochemical staining of paraffin-embedded Human prostate tissue within the normal limits using anti-NHEJ1 mouse monoclonal antibody. (Heat-induced epitope retrieval by 10mM citric buffer)



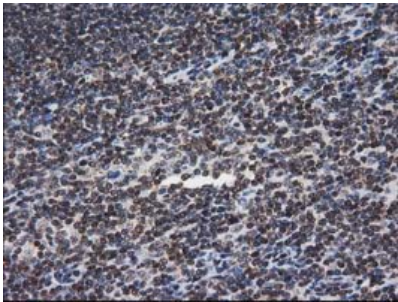
Immunohistochemical staining of paraffin-embedded Carcinoma of Human prostate tissue using anti-NHEJ1 mouse monoclonal antibody. (Heat-induced epitope retrieval by 10mM citric buffer)



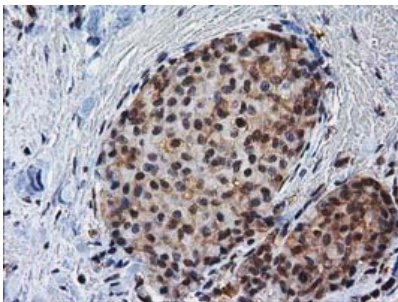
Immunohistochemical staining of paraffin-embedded Carcinoma of Human bladder tissue using anti-NHEJ1 mouse monoclonal antibody. (Heat-induced epitope retrieval by 10mM citric buffer)



Immunohistochemical staining of paraffin-embedded Human lymph node tissue within the normal limits using anti-NHEJ1 mouse monoclonal antibody. (Heat-induced epitope retrieval by 10mM citric buffer)

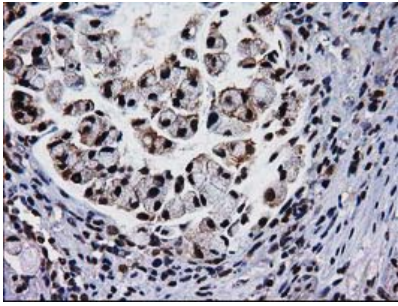


Immunohistochemical staining of paraffin-embedded Human lymphoma tissue using anti-NHEJ1 mouse monoclonal antibody. (Heat-induced epitope retrieval by 10mM citric buffer)

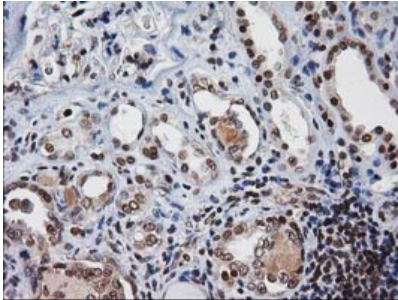


Immunohistochemical staining of paraffin-embedded Adenocarcinoma of Human breast tissue using anti-NHEJ1 mouse monoclonal antibody. (Heat-induced epitope retrieval by 10mM citric buffer)

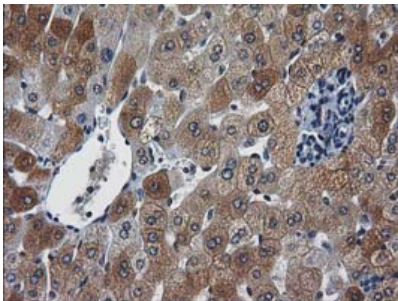
Immunohistochemical staining of paraffin-embedded Adenocarcinoma of Human colon tissue using anti-NHEJ1 mouse monoclonal antibody. (Heat-induced epitope retrieval)



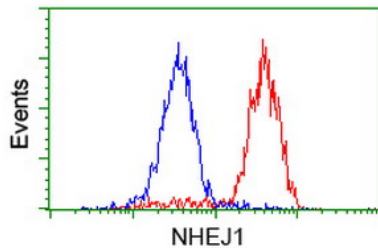
by 10mM citric buffer



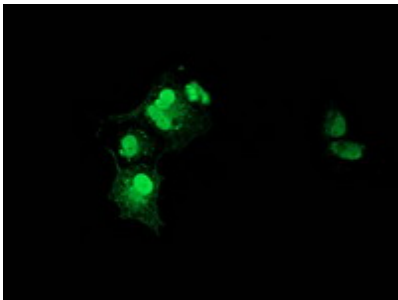
Immunohistochemical staining of paraffin-embedded Human Kidney tissue within the normal limits using anti-NHEJ1 mouse monoclonal antibody. (Heat-induced epitope retrieval by 10mM citric buffer



Immunohistochemical staining of paraffin-embedded Human liver tissue within the normal limits using anti-NHEJ1 mouse monoclonal antibody. (Heat-induced epitope retrieval by 10mM citric buffer

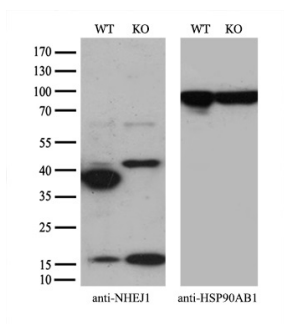


Flow cytometric Analysis of HeLa cells



Anti-NHEJ1 mouse monoclonal antibody (M03552) immunofluorescent staining of COS7 cells transiently transfected by pCMV6-ENTRY NHEJ1.

Equivalent amounts of cell lysates (10 ug per lane) of wild-type HeLa cells (WT) and NHEJ1-Knockout HeLa cells (KO) were separated by SDS-PAGE and immunoblotted with anti-NHEJ1 monoclonal antibody M03552 (1:200). Then the



blotted membrane was stripped and reprobed with anti-HSP90 antibody as a loading control.

Submit a product review to Biocompare.com

Submit a review of this product to Biocompare.com to receive a \$20 Amazon.com giftcard! Your reviews help your fellow scientists make the right decisions. Thank you for your contribution.



Anti-XLF (NHEJ1) Mouse Monoclonal Antibody [Clone ID: OTI3D6]