

Anti-XLF (NHEJ1) Mouse Monoclonal Antibody [Clone ID: OTI1E2]

Catalog Number: M03552-1

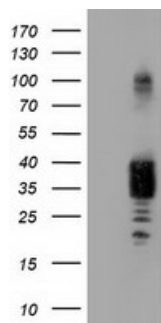
Overview

Product Name	Anti-XLF (NHEJ1) Mouse Monoclonal Antibody [Clone ID: OTI1E2]
Reactive Species	Dog, Human, Monkey, Rat
Description	Boster Bio NHEJ1 (XLF) mouse monoclonal antibody, clone OTI1E2 (formerly 1E2). Catalog# M03552-1. Tested in FC, IF, IHC, WB. This antibody reacts with Human, Monkey, Rat, Dog.
Application	Flow Cytometry, IF, IHC, WB
Clonality	Monoclonal OTI1E2
Formulation	PBS (PH 7.3) containing 1% BSA, 50% glycerol and 0.02% sodium azide.
Storage Instructions	Store at -20°C as received.
Host	Mouse
Uniprot ID	Q9H9Q4

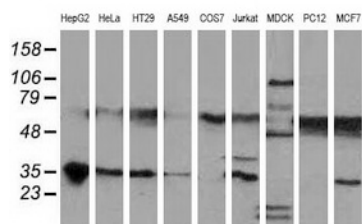
Technical Details

Immunogen	Full length human recombinant protein of human NHEJ1 (NP_079058) produced in HEK293T cell.
Isotype	IgG1
Concentration	0.92 mg/ml
Purification	Purified from mouse ascites fluids or tissue culture supernatant by affinity chromatography (protein A/G)
Suggested Dilutions	Dilute the sample so that the expected range of concentrations fall within the detection range of this kit. If the expected range of concentration is unknown, a pilot test should be conducted to decide the optimal dilution ratio for your samples. Some PubMed article(s) citing the expression level of this target are as follows:

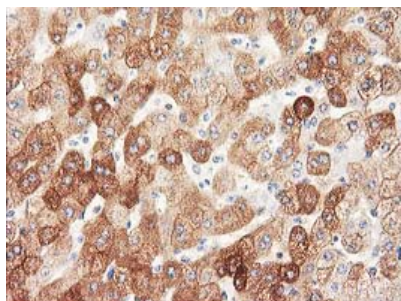
Anti-XLF (NHEJ1) Mouse Monoclonal Antibody [Clone ID: OTI1E2] (M03552-1) Images



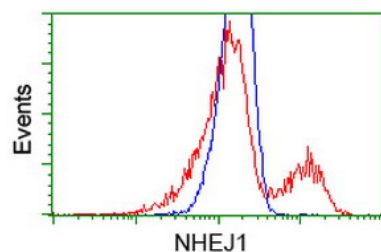
HEK293T cells were transfected with the pCMV6-ENTRY control (Left lane) or pCMV6-ENTRY NHEJ1 (Right lane) cDNA for 48 hrs and lysed. Equivalent amounts of cell lysates (5 ug per lane) were separated by SDS-PAGE and immunoblotted with anti-NHEJ1.



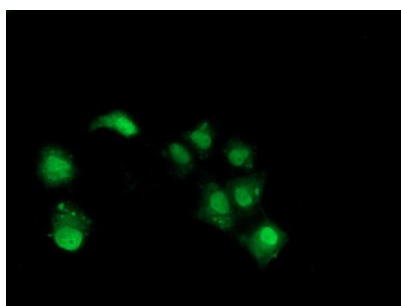
Western blot analysis of extracts (35ug) from 9 different cell lines by using anti-NHEJ1 monoclonal antibody.



Immunohistochemical staining of paraffin-embedded Human liver tissue within the normal limits using anti-NHEJ1 mouse monoclonal antibody. (Heat-induced epitope retrieval by 10mM citric buffer)



HEK293T cells transfected with either NHEJ1 (Myc-DDK-tagged) overexpress plasmid (Red) or empty vector control plasmid (Blue) were immunostained by anti-NHEJ1 antibody (M03552-1)



Anti-NHEJ1 mouse monoclonal antibody (M03552-1) immunofluorescent staining of COS7 cells transiently transfected by pCMV6-ENTRY NHEJ1.

Submit a review of this product to Biocompare.com to receive a \$20 Amazon.com giftcard! Your reviews help your fellow scientists make the right decisions. Thank you for your contribution.



Anti-XLF (NHEJ1) Mouse Monoclonal Antibody [Clone ID: OT11E2]