

Anti-MAGE-1 (Target for Cancer Immunotherapy) Monoclonal Antibody

Catalog Number: M03570

About MAGEA1

Recognizes a protein of 42-46kDa, identified as MAGE-1. This monoclonal antibody does not cross-react with MAGE-2, -3, -4, -6 -9, -10, -or -12 protein. Human malignant neoplasms carry rejection antigens that are recognized by the patients' autologous, tumor directed and specific, cytolytic, CD8+ T lymphocyte clones (CTL). The MAGE family of genes codes an important group of antigens. It was identified that melanomas and primary glial brain tumors express common melanoma associated antigens (MAAs). Because MAGE-1 is expressed on a significant proportion of human neoplasms of various histological types (melanoma, brain tumors of glial origin, neuroblastoma, non-small cell lung cancer, breast, gastric, colorectal, ovarian, renal cell carcinomas) and not on normal tissues, the encoded antigen may serve as a marker of early detection and target for cancer immunotherapy.

Overview

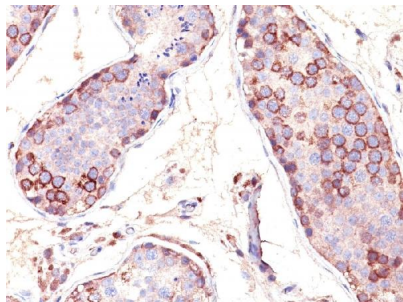
Product Name	Anti-MAGE-1 (Target for Cancer Immunotherapy) Monoclonal Antibody
Reactive Species	Dog, Human, Rat
Description	Boster Bio Anti-MAGE-1 (Target for Cancer Immunotherapy) Monoclonal Antibody (Catalog # M03570). Tested in Flow Cytometry, IF, IHC applications. This antibody reacts with Human, Rat, Dog.
Conjugate	Biotin
Application	Flow Cytometry, IF, IHC
Clonality	Monoclonal Clone: SPM282
Formulation	Prepared in 10mM PBS with 0.05% BSA & 0.05% azide. Also available WITHOUT BSA & azide at 1.0mg/ml.
Storage Instructions	Antibody with azide - store at 2 to 8°C. Antibody without azide - store at -20 to -80°C. Antibody is stable for 24 months. Non-hazardous. No MSDS required.
Host	Mouse
Uniprot ID	P43355

Technical Details

Immunogen	Human MAGE-A1 full length recombinant protein
Predicted Reactive Species	Pig, Rabbit
Cross Reactivity	Does not cross-react with primate, avian or amphibian GR.
Isotype	IgG1, kappa

Form	Liquid
Concentration	Purified antibody with BSA and azide at 200ug/ml
Purification	200ug/ml of antibody purified from Bioreactor Concentrate by Protein A/G.
Suggested Dilutions	<p>Dilute the sample so that the expected range of concentrations fall within the detection range of this kit.</p> <p>If the expected range of concentration is unknown, a pilot test should be conducted to decide the optimal dilution ratio for your samples.</p> <p>Some PubMed article(s) citing the expression level of this target are as follows:</p> <p>Boster Bio's internal QC testing used:</p> <p>Flow Cytometry (1-2ug/million cells)</p> <p>Immunofluorescence (1-2ug/ml)</p> <p>Immunohistochemistry (Formalin-fixed) (1-2ug/ml for 30 minutes at RT)(Staining of formalin-fixed tissues requires heating tissue sections in 10mM Tris with 1mM EDTA, pH 9.0, for 45 min at 95&degC followed by cooling at RT for 20 minutes)</p> <p>Optimal dilution for a specific application should be determined.</p>

Anti-MAGE-1 (Target for Cancer Immunotherapy) Monoclonal Antibody (M03570) Images



Formalin-fixed, paraffin-embedded human Testis stained with Anti-MAGE-1 Monoclonal Antibody (SPM282).

Submit a product review to Biocompare.com

Submit a review of this product to Biocompare.com to receive a \$20 Amazon.com giftcard! Your reviews help your fellow scientists make the right decisions. Thank you for your contribution.



Anti-MAGE-1 (Target for Cancer Immunotherapy) Monoclonal Antibody