

Anti-Natriuretic Peptide Receptor C Antibody

Catalog Number: M03589-1

About NPR3

Receptor for the natriuretic peptide hormones, binding with similar affinities atrial natriuretic peptide NPPA/ANP, brain natriuretic peptide NPPB/BNP, and C-type natriuretic peptide NPPC/CNP. May function as a clearance receptor for NPPA, NPPB and NPPC, regulating their local concentrations and effects. May regulate diuresis, blood pressure and skeletal development. Does not have guanylate cyclase activity.

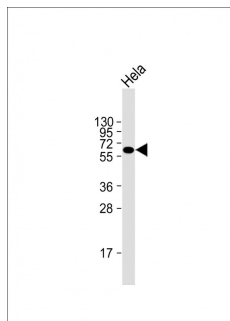
Overview

Product Name	Anti-Natriuretic Peptide Receptor C Antibody
Reactive Species	Human
Description	Boster Bio Anti-Natriuretic Peptide Receptor C Antibody (Catalog # M03589-1). Tested in WB application(s). This antibody reacts with Human.
Application	WB
Clonality	Monoclonal 1748CT403.18.42
Formulation	Purified monoclonal antibody supplied in PBS with 0.09% (W/V) sodium azide.
Storage Instructions	Maintain refrigerated at 2-8°C for up to 2 weeks. For long-term storage, store at -20°C in small aliquots to prevent freeze-thaw cycles.
Host	Mouse
Uniprot ID	P17342

Technical Details

Immunogen	This Natriuretic Peptide Receptor C antibody is generated from a mouse immunized with a KLH conjugated synthetic peptide between 200-420 amino acids from the human region of human Natriuretic Peptide Receptor C.
Predicted Reactive Species	Human, Mouse, Rat
Isotype	IgG1,k
Purification	This antibody is purified through a protein G column, followed by dialysis against PBS.
Suggested Dilutions	WB: 1:2000

Anti-Natriuretic Peptide Receptor C Antibody (M03589-1) Images



Anti-Natriuretic Peptide Receptor C Antibody at 1:2000 dilution + HeLa whole cell lysate. Lysates/proteins at 20 µg per lane. Secondary Goat Anti-mouse IgG, (H+L), Peroxidase conjugated at 1/10000 dilution. Predicted band size : 60 kDa. Blocking/Dilution buffer: 5% NFD/MTBST.

Submit a product review to Biocompare.com

Submit a review of this product to Biocompare.com to receive a \$20 Amazon.com giftcard! Your reviews help your fellow scientists make the right decisions. Thank you for your contribution.



Anti-Natriuretic Peptide Receptor C Antibody

For Research Use Only. Not for use in diagnostic procedures.