

Anti-Natriuretic Peptide Receptor C (NPR3) Mouse Monoclonal Antibody [Clone ID: OTI11A6]

Catalog Number: M03589-2

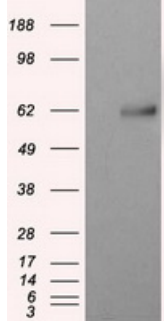
Overview

Product Name	Anti-Natriuretic Peptide Receptor C (NPR3) Mouse Monoclonal Antibody [Clone ID: OTI11A6]
Reactive Species	Human, Mouse, Rat
Description	Boster Bio Anti-NPR3 (Natriuretic Peptide Receptor C) mouse monoclonal antibody, clone OTI11A6 (formerly 11A6). Catalog# M03589-2. Tested in FC, IF, IHC, WB. This antibody reacts with Human, Mouse, Rat.
Application	Flow Cytometry, IF, IHC, WB
Clonality	Monoclonal OTI11A6
Formulation	PBS (pH 7.3) containing 1% stabilizing protein, 50% glycerol and 0.02% sodium azide. This antibody is supplied in a stabilized formulation. Compatibility with conjugation reactions depends on the chemistry of the conjugation method used. For conjugation methods that are not compatible with the stabilizing components present in this formulation, a carrier-free antibody format is required.
Storage Instructions	Store at -20°C as received.
Host	Mouse
Uniprot ID	P17342

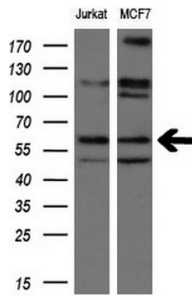
Technical Details

Immunogen	Full length human recombinant protein of human NPR3 (NP_000899) produced in HEK293T cell.
Isotype	IgG2b
Concentration	0.83 mg/ml
Purification	Purified from mouse ascites fluids or tissue culture supernatant by affinity chromatography (protein A/G)
Suggested Dilutions	WB 1:200 - 1:1000 IHC 1:50 IF 1:100

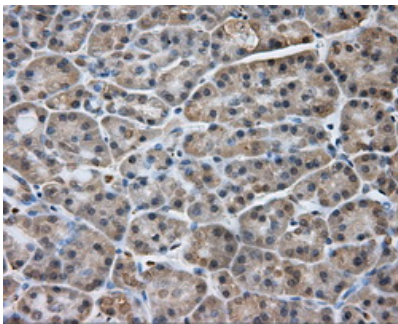
Anti-Natriuretic Peptide Receptor C (NPR3) Mouse Monoclonal Antibody [Clone ID: OTI11A6] (M03589-2) Images



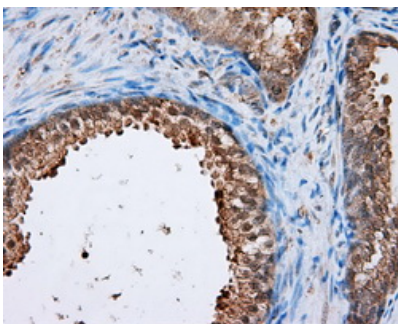
HEK293T cells were transfected with the pCMV6-ENTRY control (Left lane) or pCMV6-ENTRY NPR3 (Right lane) cDNA for 48 hrs and lysed. Equivalent amounts of cell lysates (5 ug per lane) were separated by SDS-PAGE and immunoblotted with anti-NPR3.



Western blot analysis of extracts (10ug) from 2 different cell lines by using anti-NPR3 monoclonal antibody at 1:200.

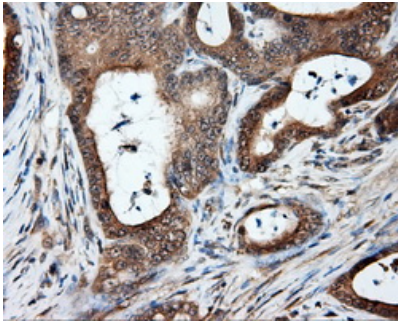


Immunohistochemical staining of paraffin-embedded pancreas tissue within the normal limits using anti-NPR3 mouse monoclonal antibody. (Heat-induced epitope retrieval by 10mM citric buffer)

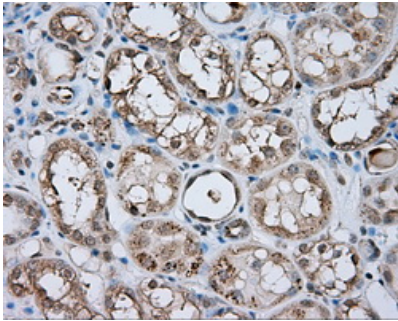


Immunohistochemical staining of paraffin-embedded prostate tissue within the normal limits using anti-NPR3 mouse monoclonal antibody. (Heat-induced epitope retrieval by 10mM citric buffer)

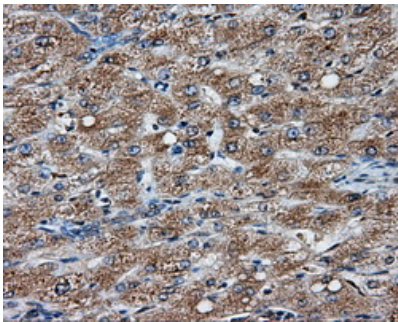
Immunohistochemical staining of paraffin-embedded Adenocarcinoma of colon tissue using anti-NPR3 mouse monoclonal antibody. (Heat-induced epitope retrieval by 10mM citric buffer)



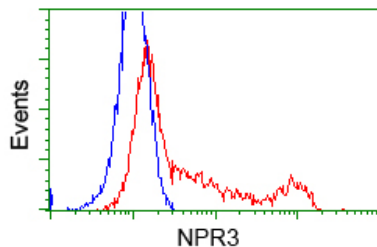
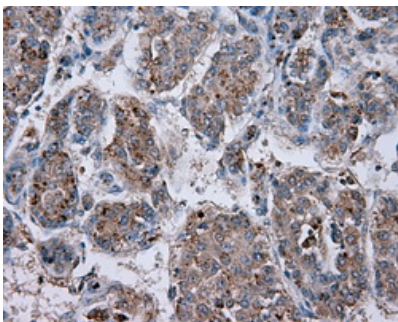
Immunohistochemical staining of paraffin-embedded Kidney tissue within the normal limits using anti-NPR3 mouse monoclonal antibody. (Heat-induced epitope retrieval by 10mM citric buffer)



Immunohistochemical staining of paraffin-embedded liver tissue within the normal limits using anti-NPR3 mouse monoclonal antibody. (Heat-induced epitope retrieval by 10mM citric buffer)

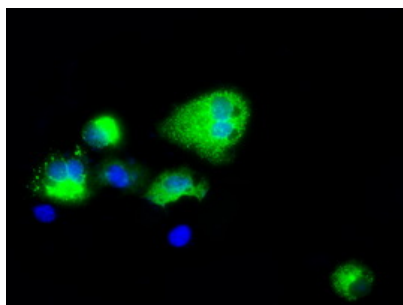


Immunohistochemical staining of paraffin-embedded Carcinoma of liver tissue using anti-NPR3 mouse monoclonal antibody. (Heat-induced epitope retrieval by 10mM citric buffer)



HEK293T cells transfected with either pCMV6-ENTRY NPR3 (Red) or empty vector control plasmid (Blue) were immunostained with anti-NPR3 mouse monoclonal (M03589-2)

Anti-NPR3 mouse monoclonal antibody (M03589-2)



immunofluorescent staining of COS7 cells transiently transfected by pCMV6-ENTRY NPR3.

Submit a product review to Biocompare.com

Submit a review of this product to Biocompare.com to receive a \$20 Amazon.com giftcard! Your reviews help your fellow scientists make the right decisions. Thank you for your contribution.



Anti-Natriuretic Peptide Receptor C (NPR3) Mouse Monoclonal Antibody [Clone ID: OT111A6]

For Research Use Only. Not for use in diagnostic procedures.