

Anti-LMAN1 Mouse Monoclonal Antibody [Clone ID: OT1E3]

Catalog Number: M03628

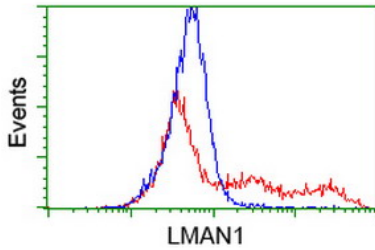
Overview

Product Name	Anti-LMAN1 Mouse Monoclonal Antibody [Clone ID: OT1E3]
Reactive Species	Dog, Human, Mouse, Rat
Description	Boster Bio LMAN1 mouse monoclonal antibody, clone OT1E3 (formerly 1E3). Catalog# M03628. Tested in FC, IF, IHC, WB. This antibody reacts with Human, Mouse, Rat, Dog.
Conjugate	Unconjugated
Application	Flow Cytometry, IF, IHC, WB
Clonality	Monoclonal OT1E3
Formulation	PBS (pH 7.3) containing 1% stabilizing protein, 50% glycerol and 0.02% sodium azide. This antibody is supplied in a stabilized formulation. Compatibility with conjugation reactions depends on the chemistry of the conjugation method used. For conjugation methods that are not compatible with the stabilizing components present in this formulation, a carrier-free antibody format is required.
Storage Instructions	Store at -20°C for one year. For short term storage and frequent use, store at 4°C for up to one month. Avoid repeated freeze-thaw cycles.
Host	Mouse
Uniprot ID	P49257

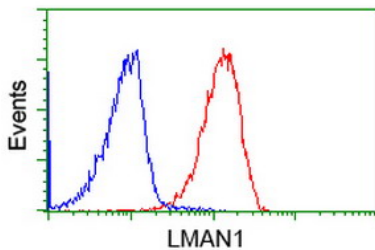
Technical Details

Immunogen	Full length human recombinant protein of human LMAN1 (NP_005561) produced in HEK293T cell.
Isotype	IgG1
Concentration	0.24 mg/ml
Purification	Purified from mouse ascites fluids or tissue culture supernatant by affinity chromatography (protein A/G)
Suggested Dilutions	WB 1:500~2000 IHC 1:150 IF 1:100 Flow Cytometry 1:100

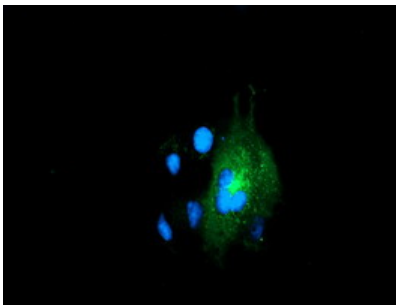
Anti-LMAN1 Mouse Monoclonal Antibody [Clone ID: OTI1E3] (M03628) Images



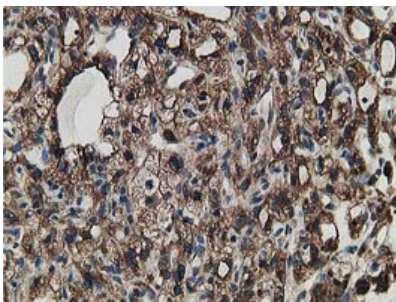
HEK293T cells transfected with either LMAN1 (Myc-DDK-tagged) overexpress plasmid (Red) or empty vector control plasmid (Blue) were immunostained by anti-LMAN1 antibody (M03628)



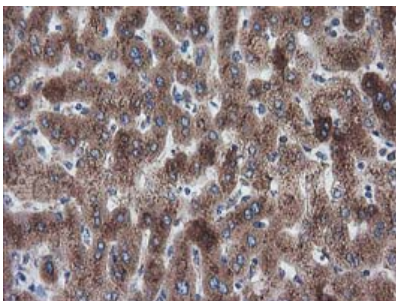
Flow cytometric Analysis of Jurkat cells



Anti-LMAN1 mouse monoclonal antibody (M03628) immunofluorescent staining of COS7 cells transiently transfected by pCMV6-ENTRY LMAN1.

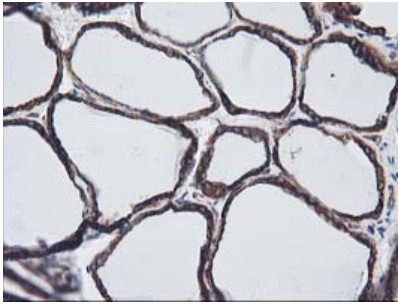


Immunohistochemical staining of paraffin-embedded Carcinoma of Human kidney tissue using anti-LMAN1 mouse monoclonal antibody. (Heat-induced epitope retrieval by 10mM citric buffer)

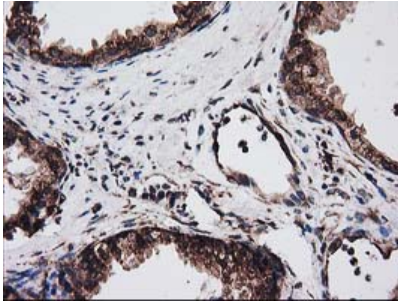


Immunohistochemical staining of paraffin-embedded Human liver tissue within the normal limits using anti-LMAN1 mouse monoclonal antibody. (Heat-induced epitope retrieval by 10mM citric buffer)

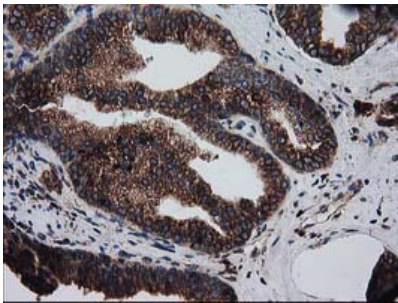
Immunohistochemical staining of paraffin-embedded Human



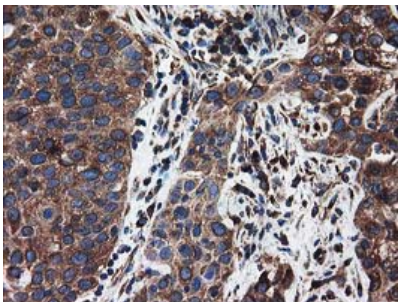
thyroid tissue within the normal limits using anti-LMAN1 mouse monoclonal antibody. (Heat-induced epitope retrieval by 10mM citric buffer)



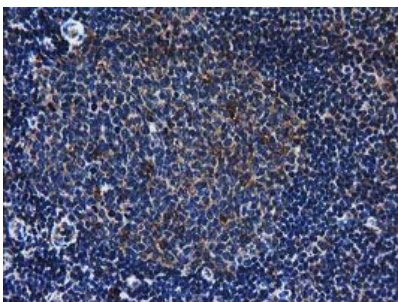
Immunohistochemical staining of paraffin-embedded Human prostate tissue within the normal limits using anti-LMAN1 mouse monoclonal antibody. (Heat-induced epitope retrieval by 10mM citric buffer)



Immunohistochemical staining of paraffin-embedded Carcinoma of Human prostate tissue using anti-LMAN1 mouse monoclonal antibody. (Heat-induced epitope retrieval by 10mM citric buffer)

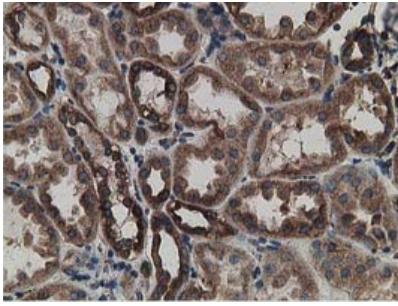


Immunohistochemical staining of paraffin-embedded Carcinoma of Human bladder tissue using anti-LMAN1 mouse monoclonal antibody. (Heat-induced epitope retrieval by 10mM citric buffer)

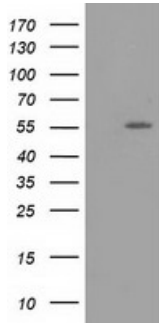


Immunohistochemical staining of paraffin-embedded Human lymph node tissue within the normal limits using anti-LMAN1 mouse monoclonal antibody. (Heat-induced epitope retrieval by 10mM citric buffer)

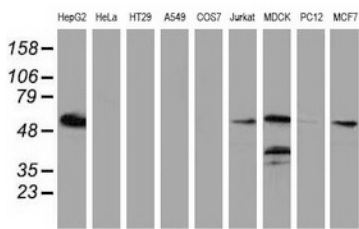
Immunohistochemical staining of paraffin-embedded Human Kidney tissue within the normal limits using anti-LMAN1 mouse monoclonal antibody. (Heat-induced epitope retrieval



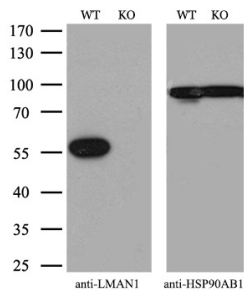
by 10mM citric buffer



HEK293T cells were transfected with the pCMV6-ENTRY control (Left lane) or pCMV6-ENTRY LMAN1 (Right lane) cDNA for 48 hrs and lysed. Equivalent amounts of cell lysates (5 ug per lane) were separated by SDS-PAGE and immunoblotted with anti-LMAN1.



Western blot analysis of extracts (35ug) from 9 different cell lines by using anti-LMAN1 monoclonal antibody.



Equivalent amounts of cell lysates (10 ug per lane) of wild-type 293T cells (WT) and LMAN1-Knockout 293T cells (KO) were separated by SDS-PAGE and immunoblotted with anti-LMAN1 monoclonal antibody M03628

Submit a product review to [Biocompare.com](https://www.biocompare.com)

Submit a review of this product to [Biocompare.com](https://www.biocompare.com) to receive a \$20 Amazon.com giftcard! Your reviews help your fellow scientists make the right decisions. Thank you for your contribution.



Anti-LMAN1 Mouse Monoclonal Antibody [Clone ID: OTI1E3]

For Research Use Only. Not for use in diagnostic procedures.