

Anti-LMAN1 Mouse Monoclonal Antibody [Clone ID: OTI1A8]

Catalog Number: M03628-2

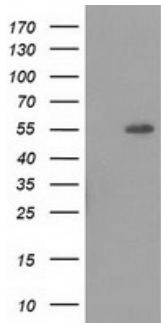
Overview

Product Name	Anti-LMAN1 Mouse Monoclonal Antibody [Clone ID: OTI1A8]
Reactive Species	Dog, Human, Monkey, Mouse, Rat
Description	Boster Bio LMAN1 mouse monoclonal antibody, clone OTI1A8 (formerly 1A8). Catalog# M03628-2. Tested in FC, IF, IHC, WB. This antibody reacts with Human, Monkey, Mouse, Rat, Dog.
Application	Flow Cytometry, IF, IHC, WB
Clonality	Monoclonal OTI1A8
Formulation	PBS (pH 7.3) containing 1% stabilizing protein, 50% glycerol and 0.02% sodium azide. This antibody is supplied in a stabilized formulation. Compatibility with conjugation reactions depends on the chemistry of the conjugation method used. For conjugation methods that are not compatible with the stabilizing components present in this formulation, a carrier-free antibody format is required.
Storage Instructions	Store at -20°C as received.
Host	Mouse
Uniprot ID	P49257

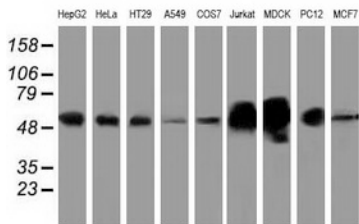
Technical Details

Immunogen	Full length human recombinant protein of human LMAN1 (NP_005561) produced in HEK293T cell.
Isotype	IgG1
Concentration	1 mg/ml
Purification	Purified from mouse ascites fluids or tissue culture supernatant by affinity chromatography (protein A/G)
Suggested Dilutions	WB 1:200~500 IHC 1:150 IF 1:100 Flow Cytometry 1:100

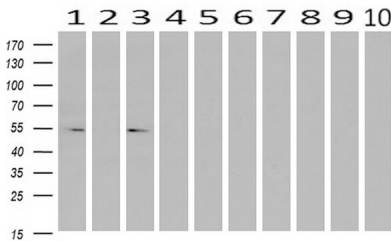
Anti-LMAN1 Mouse Monoclonal Antibody [Clone ID: OTI1A8] (M03628-2) Images



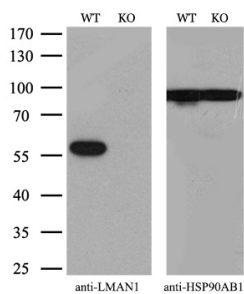
HEK293T cells were transfected with the pCMV6-ENTRY control (Left lane) or pCMV6-ENTRY LMAN1 (Right lane) cDNA for 48 hrs and lysed. Equivalent amounts of cell lysates (5 ug per lane) were separated by SDS-PAGE and immunoblotted with anti-LMAN1 (Cat# M03628-2).



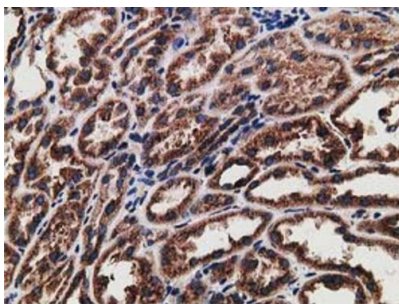
Western blot analysis of extracts (35ug) from 9 different cell lines by using anti-LMAN1 monoclonal antibody.



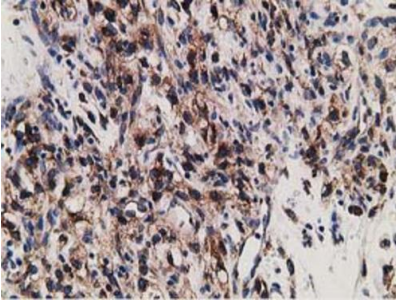
Western blot analysis of extracts (10ug) from 10 Human tissue by using anti-LMAN1 monoclonal antibody at 1:200 (1: Testis; 2: Omentum; 3: Uterus; 4: Breast; 5: Brain; 6: Liver; 7: Ovary; 8: Thyroid gland; 9: colon; 10: spleen).



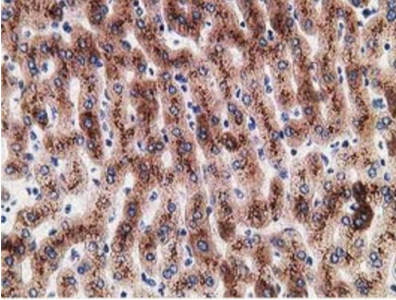
Equivalent amounts of cell lysates (10 ug per lane) of wild-type 293T cells (WT) and LMAN1-Knockout 293T cells (KO) were separated by SDS-PAGE and immunoblotted with anti-LMAN1 monoclonal antibody M03628-2, (1:1000). Then the blotted membrane was stripped and reprobed with anti-HSP90AB1 antibody as a loading control.



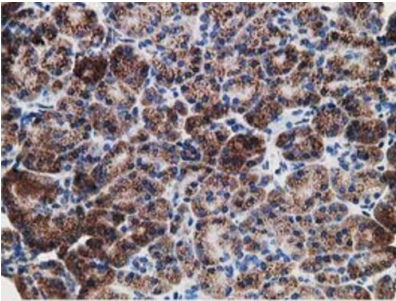
Immunohistochemical staining of paraffinembedded Human Kidney tissue within the normal limits using anti-LMAN1 mouse monoclonal antibody. (Heat-induced epitope retrieval by 10mM citric buffer, pH6.0, 100°C for 10min, M03628-2)



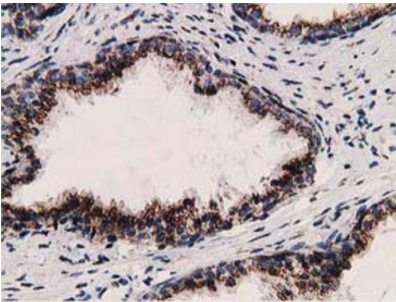
Immunohistochemical staining of paraffinembedded Carcinoma of Human kidney tissue using anti-LMAN1 mouse monoclonal antibody. (Heat-induced epitope retrieval by 10mM citric buffer, pH6.0, 100°C for 10min, M03628-2)



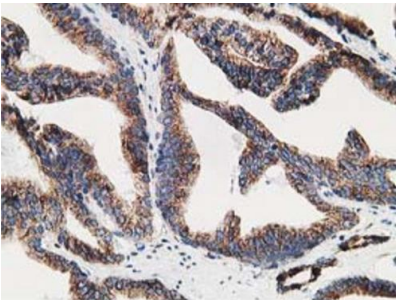
Immunohistochemical staining of paraffinembedded Human liver tissue within the normal limits using anti-LMAN1 mouse monoclonal antibody. (Heat-induced epitope retrieval by 10mM citric buffer, pH6.0, 100°C for 10min, M03628-2)



Immunohistochemical staining of paraffinembedded Human pancreas tissue within the normal limits using anti-LMAN1 mouse monoclonal antibody. (Heat-induced epitope retrieval by 10mM citric buffer, pH6.0, 100°C for 10min, M03628-2)

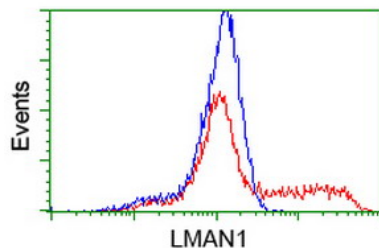
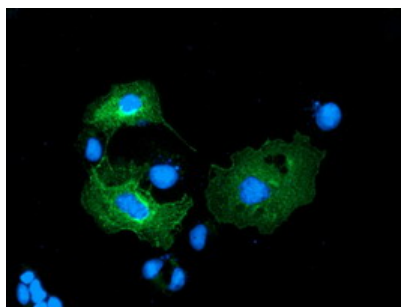


Immunohistochemical staining of paraffinembedded Human prostate tissue within the normal limits using anti-LMAN1 mouse monoclonal antibody. (Heat-induced epitope retrieval by 10mM citric buffer, pH6.0, 100°C for 10min, M03628-2)

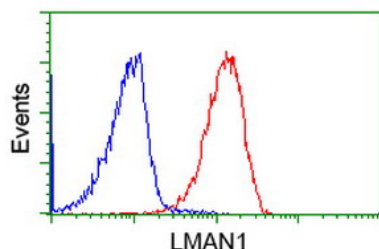


Immunohistochemical staining of paraffinembedded Carcinoma of Human prostate tissue using anti-LMAN1 mouse monoclonal antibody. (Heat-induced epitope retrieval by 10mM citric buffer, pH6.0, 100°C for 10min, M03628-2)

Anti-LMAN1 mouse monoclonal antibody (M03628-2) immunofluorescent staining of COS7 cells transiently transfected by pCMV6-ENTRY LMAN1.



HEK293T cells transfected with either overexpress plasmid (Red) or empty vector control plasmid (Blue) were immunostained by anti-LMAN1 antibody (M03628-2), and then analyzed by flow cytometry.



Flow cytometric Analysis of Jurkat cells, using anti-LMAN1 antibody, (Red), compared to a nonspecific negative control antibody, (Blue).

Submit a product review to Biocompare.com

Submit a review of this product to Biocompare.com to receive a \$20 Amazon.com giftcard! Your reviews help your fellow scientists make the right decisions. Thank you for your contribution.



Anti-LMAN1 Mouse Monoclonal Antibody [Clone ID: OT11A8]

For Research Use Only. Not for use in diagnostic procedures.