

Anti-Phospho-PRAS40 (T246) Rabbit Monoclonal Antibody

Catalog Number: M03629T246

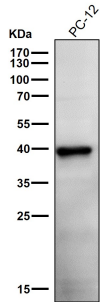
Overview

Product Name	Anti-Phospho-PRAS40 (T246) Rabbit Monoclonal Antibody
Reactive Species	Human
Description	Boster Bio Anti-Phospho-PRAS40 (T246) Rabbit Monoclonal Antibody catalog # M03629T246. Tested in WB applications. This antibody reacts with Human.
Application	WB
Clonality	Monoclonal 32A68
Formulation	Rabbit IgG in phosphate buffered saline, pH 7.4, 150mM NaCl, 0.02% sodium azide and 50% glycerol, 0.4-0.5mg/ml BSA.
Storage Instructions	Store at -20°C for one year. For short term storage and frequent use, store at 4°C for up to one month. Avoid repeated freeze-thaw cycles.
Host	Rabbit
Uniprot ID	Q96B36

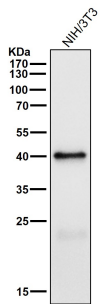
Technical Details

Immunogen	A synthesized peptide derived from human Phospho-PRAS40 (T246)
Isotype	IgG
Form	Liquid
Concentration	Actual concentration vary by lot. Use suggested dilution ratio to decide dilution procedure.
Purification	Affinity-chromatography
Suggested Dilutions	WB 1:500-1:2000

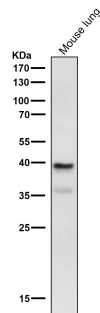
Anti-Phospho-PRAS40 (T246) Rabbit Monoclonal Antibody (M03629T246) Images



All lanes use the Antibody at 1:1K dilution for 1 hour at room temperature.



All lanes use the Antibody at 1:1K dilution for 1 hour at room temperature.



All lanes use the Antibody at 1:2K dilution for 1 hour at room temperature.

Submit a product review to [Biocompare.com](https://www.biocompare.com)

Submit a review of this product to [Biocompare.com](https://www.biocompare.com) to receive a \$20 Amazon.com giftcard! Your reviews help your fellow scientists make the right decisions. Thank you for your contribution.



Anti-Phospho-PRAS40 (T246) Rabbit Monoclonal Antibody