

Anti-BBS4 Antibody (Center)

Catalog Number: M03640

About BBS4

The BBSome complex is thought to function as a coat complex required for sorting of specific membrane proteins to the primary cilia. The BBSome complex is required for ciliogenesis but is dispensable for centriolar satellite function. This ciliogenic function is mediated in part by the Rab8 GDP/GTP exchange factor, which localizes to the basal body and contacts the BBSome. Rab8(GTP) enters the primary cilium and promotes extension of the ciliary membrane. Firstly the BBSome associates with the ciliary membrane and binds to RAB3IP/Rabin8, the guanosyl exchange factor (GEF) for Rab8 and then the Rab8-GTP localizes to the cilium and promotes docking and fusion of carrier vesicles to the base of the ciliary membrane. The BBSome complex, together with the LTZL1, controls SMO ciliary trafficking and contributes to the sonic hedgehog (SHH) pathway regulation. Required for proper BBSome complex assembly and its ciliary localization. Required for microtubule anchoring at the centrosome but not for microtubule nucleation. May be required for the dynein-mediated transport of pericentriolar proteins to the centrosome.

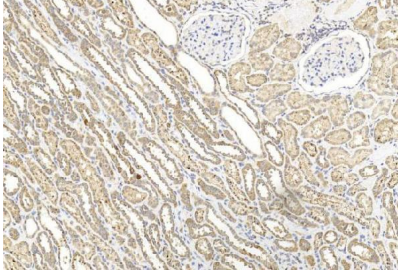
Overview

Product Name	Anti-BBS4 Antibody (Center)
Reactive Species	Human, Mouse, Rat
Description	Boster Bio Anti-BBS4 Antibody (Center) (Catalog # M03640). Tested in WB application(s). This antibody reacts with Human, Mouse, Rat.
Application	WB
Clonality	Monoclonal 1292CT845.130.218
Formulation	Purified monoclonal antibody supplied in PBS with 0.09% (W/V) sodium azide.
Storage Instructions	Maintain refrigerated at 2-8°C for up to 2 weeks. For long-term storage, store at -20°C in small aliquots to prevent freeze-thaw cycles.
Host	Mouse
Uniprot ID	Q96RK4

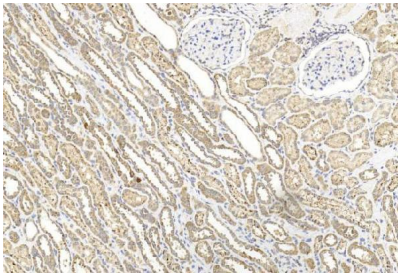
Technical Details

Immunogen	This BBS4 antibody is generated from a mice immunized with a recombinant protein between 1-240 amino acids from human BBS4.
Predicted Reactive Species	Bovine, Rabbit
Isotype	IgG1
Purification	This antibody is purified through a protein G column, followed by dialysis against PBS.
Suggested Dilutions	IHC: 1:250 WB: 1:1000

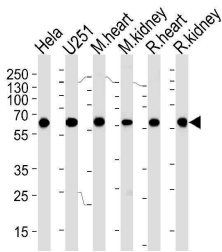
Anti-BBS4 Antibody (Center) (M03640) Images



Immunohistochemical analysis of paraffin-embedded Human kidney section using Pink1. M03640 was diluted at 1:250 dilution. A undiluted biotinylated goat polyvalent antibody was used as the secondary, followed by DAB staining.



Immunohistochemical analysis of paraffin-embedded Human kidney section using Pink1. M03640 was diluted at 1:250 dilution. A undiluted biotinylated goat polyvalent antibody was used as the secondary.



Western blot analysis of lysates from HeLa, U251 cell line, mouse heart and kidney, rat heart and kidney tissue (from left to right), using PHB Antibody . M03640 was diluted at 1:1000 at each lane. A goat anti-mouse IgG H&L(HRP) at 1:3000 dilution was used as the secondary antibody. Lysates at 35ug per lane.

Submit a product review to Biocompare.com

Submit a review of this product to Biocompare.com to receive a \$20 Amazon.com giftcard! Your reviews help your fellow scientists make the right decisions. Thank you for your contribution.



Anti-BBS4 Antibody (Center)

For Research Use Only. Not for use in diagnostic procedures.