

Anti-Methionine Aminopeptidase 2 (METAP2) Mouse Monoclonal Antibody [Clone ID: OTI1F6]

Catalog Number: M03648

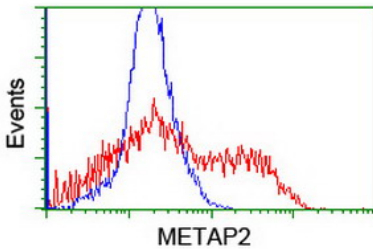
Overview

Product Name	Anti-Methionine Aminopeptidase 2 (METAP2) Mouse Monoclonal Antibody [Clone ID: OTI1F6]
Reactive Species	Human, Mouse, Rat
Description	Boster Bio METAP2 (Methionine Aminopeptidase 2) mouse monoclonal antibody, clone OTI1F6 (formerly 1F6). Catalog# M03648. Tested in FC, IF, IHC, WB. This antibody reacts with Human, Mouse, Rat.
Conjugate	Unconjugated
Application	Flow Cytometry, IF, IHC, WB
Clonality	Monoclonal OTI1F6
Formulation	PBS (pH 7.3) containing 1% stabilizing protein, 50% glycerol and 0.02% sodium azide. This antibody is supplied in a stabilized formulation. Compatibility with conjugation reactions depends on the chemistry of the conjugation method used. For conjugation methods that are not compatible with the stabilizing components present in this formulation, a carrier-free antibody format is required.
Storage Instructions	Store at -20°C for one year. For short term storage and frequent use, store at 4°C for up to one month. Avoid repeated freeze-thaw cycles.
Host	Mouse
Uniprot ID	P50579

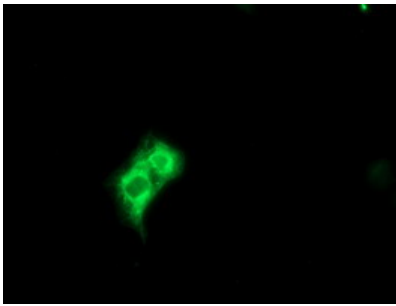
Technical Details

Immunogen	Human recombinant protein fragment corresponding to amino acids 2-212 of human METAP2 (NP_006829) produced in E.coli.
Isotype	IgG1
Concentration	1 mg/ml
Purification	Purified from mouse ascites fluids or tissue culture supernatant by affinity chromatography (protein A/G)
Suggested Dilutions	WB: 1:2000 IHC: 1:150 IF: 1:100 Flow cytometry: 1:100

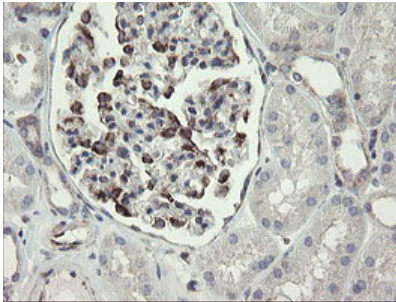
Anti-Methionine Aminopeptidase 2 (METAP2) Mouse Monoclonal Antibody [Clone ID: OTI1F6] (M03648) Images



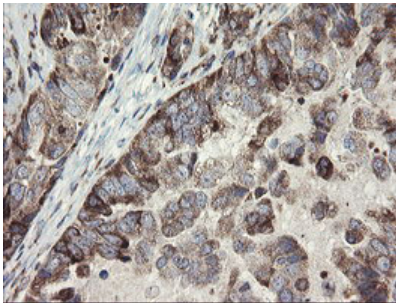
HEK293T cells transfected with either METAP2 (Myc-DDK-tagged) overexpress plasmid (Red) or empty vector control plasmid (Blue) were immunostained by anti-METAP2 antibody (M03648)



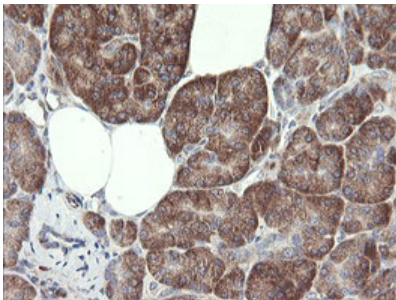
Anti-METAP2 mouse monoclonal antibody (M03648) immunofluorescent staining of COS7 cells transiently transfected by pCMV6-ENTRY METAP2.



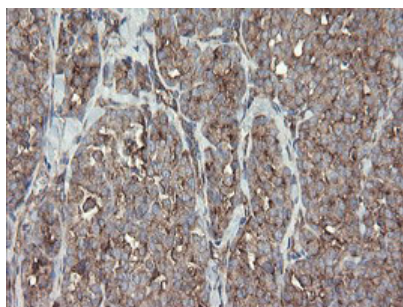
Immunohistochemical staining of paraffin-embedded Human Kidney tissue within the normal limits using anti-METAP2 mouse monoclonal antibody. (Heat-induced epitope retrieval by 10mM citric buffer)



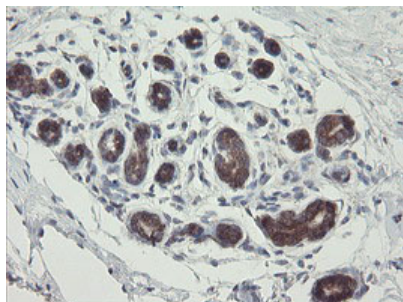
Immunohistochemical staining of paraffin-embedded Adenocarcinoma of Human ovary tissue using anti-METAP2 mouse monoclonal antibody. (Heat-induced epitope retrieval by 10mM citric buffer)



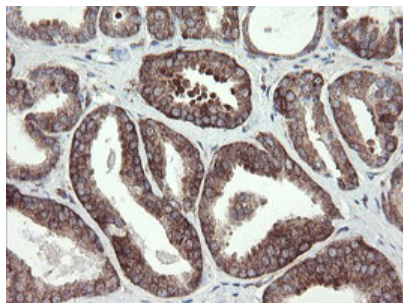
Immunohistochemical staining of paraffin-embedded Human pancreas tissue within the normal limits using anti-METAP2 mouse monoclonal antibody. (Heat-induced epitope retrieval by 10mM citric buffer)



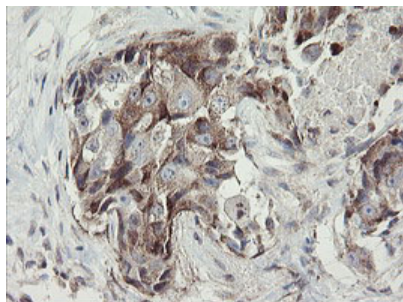
Immunohistochemical staining of paraffin-embedded Carcinoma of Human thyroid tissue using anti-METAP2 mouse monoclonal antibody. (Heat-induced epitope retrieval by 10mM citric buffer)



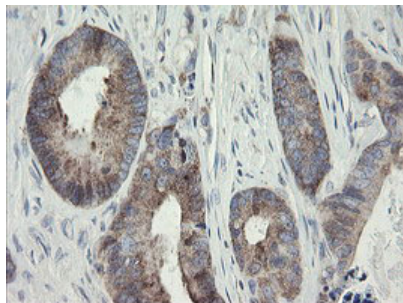
Immunohistochemical staining of paraffin-embedded Human breast tissue within the normal limits using anti-METAP2 mouse monoclonal antibody. (Heat-induced epitope retrieval by 10mM citric buffer)



Immunohistochemical staining of paraffin-embedded Carcinoma of Human prostate tissue using anti-METAP2 mouse monoclonal antibody. (Heat-induced epitope retrieval by 10mM citric buffer)

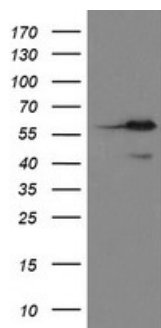


Immunohistochemical staining of paraffin-embedded Adenocarcinoma of Human breast tissue using anti-METAP2 mouse monoclonal antibody. (Heat-induced epitope retrieval by 10mM citric buffer)

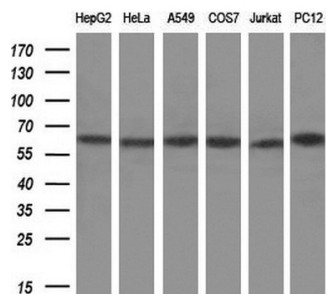


Immunohistochemical staining of paraffin-embedded Adenocarcinoma of Human colon tissue using anti-METAP2 mouse monoclonal antibody. (Heat-induced epitope retrieval by 10mM citric buffer)

HEK293T cells were transfected with the pCMV6-ENTRY control (Left lane) or pCMV6-ENTRY METAP2 (Right lane)



cDNA for 48 hrs and lysed. Equivalent amounts of cell lysates (5 ug per lane) were separated by SDS-PAGE and immunoblotted with anti-METAP2.



Western blot analysis of extracts (10ug) from 6 different cell lines by using anti-METAP2 monoclonal antibody (1:200).

Submit a product review to Biocompare.com

Submit a review of this product to Biocompare.com to receive a \$20 Amazon.com giftcard! Your reviews help your fellow scientists make the right decisions. Thank you for your contribution.



Anti-Methionine Aminopeptidase 2 (METAP2) Mouse Monoclonal Antibody [Clone ID: OTI1F6]

For Research Use Only. Not for use in diagnostic procedures.