

## Anti-hCD50 Antibody (Monoclonal, 101-1D2)

Catalog Number: M03651

### About ICAM3

Recognizes a protein of 42-46kDa, identified as MAGE-1. This monoclonal antibody does not cross-react with MAGE-2, -3, -4, -6 -9, -10, -or -12 protein. Human malignant neoplasms carry rejection antigens that are recognized by the patients&apos; autologous, tumor directed and specific, cytolytic, CD8+ T lymphocyte clones (CTL). The MAGE family of genes codes an important group of antigens. It was identified that melanomas and primary glial brain tumors express common melanoma associated antigens (MAAs). Because MAGE-1 is expressed on a significant proportion of human neoplasms of various histological types (melanoma, brain tumors of glial origin, neuroblastoma, non-small cell lung cancer, breast, gastric, colorectal, ovarian, renal cell carcinomas) and not on normal tissues, the encoded antigen may serve as a marker of early detection and target for cancer immunotherapy.

### Overview

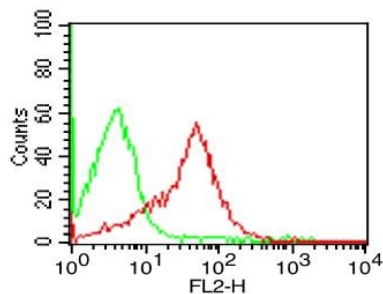
Product Name	Anti-hCD50 Antibody (Monoclonal, 101-1D2)
Reactive Species	Human
Description	Boster Bio Anti-hCD50 Antibody (Monoclonal, 101-1D2) (Catalog# M03651). Tested in FACS application(s). This antibody reacts with Human.
Conjugate	Biotin
Application	FACS
Clonality	Monoclonal 101-1D2
Formulation	100 µg in 200 µl PBS containing 0.05% stabilizing protein and 0.05% sodium azide This antibody is supplied in a stabilized formulation. Compatibility with conjugation reactions depends on the chemistry of the conjugation method used. For conjugation methods that are not compatible with the stabilizing components present in this formulation, a carrier-free antibody format is required.
Storage Instructions	Store the antibody at 4°C, stable for 6 months. For long-term storage, store at -20°C. Avoid repeated freeze and thaw cycles.
Host	Mouse
Uniprot ID	P32942

### Technical Details

Immunogen	Stimulated human leukocytes
Predicted Reactive Species	Pig, Rabbit
Cross Reactivity	Does not cross-react with primate, avian or amphibian GR.

Isotype	IgG2a Kappa
Form	Liquid
Concentration	0.5-1mg/ml, actual concentration vary by lot. Use suggested dilution ratio to decide dilution procedure.
Purification	Protein G Chromatography
Suggested Dilutions	FACS: 1-2 $\mu\text{g}/10^6$ cells

## Anti-hCD50 Antibody (Monoclonal, 101-1D2) (M03651) Images



Cell Surface flow analysis of hCD50 in PBMC (Lymphocyte gated) using 1 &mu

### Submit a product review to Biocompare.com

Submit a review of this product to Biocompare.com to receive a \$20 Amazon.com giftcard! Your reviews help your fellow scientists make the right decisions. Thank you for your contribution.



Anti-hCD50 Antibody (Monoclonal, 101-1D2)

For Research Use Only. Not for use in diagnostic procedures.