

## Anti-Krueppel-like factor 15 KLF15 Monoclonal Antibody

Catalog Number: M03661

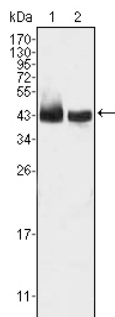
### Overview

Product Name	Anti-Krueppel-like factor 15 KLF15 Monoclonal Antibody
Reactive Species	Human
Description	Boster Bio Anti-Krueppel-like factor 15 KLF15 Monoclonal Antibody catalog # M03661. Tested in ELISA, WB applications. This antibody reacts with Human.
Application	ELISA, WB
Clonality	Monoclonal 2G8
Formulation	Ascitic fluid containing 0.03% sodium azide.
Storage Instructions	Store at -20°C for one year. For short term storage and frequent use, store at 4°C for up to one month. Avoid repeated freeze-thaw cycles.
Host	Mouse
Uniprot ID	Q9UIH9

### Technical Details

Immunogen	Purified recombinant fragment of human KLF15 expressed in E. Coli.
Cross Reactivity	No cross reactivity with other proteins.
Isotype	IgG
Form	Liquid
Concentration	1 mg/ml
Purification	Affinity purification
Suggested Dilutions	WB 1:500-1:2000 ELISA 1:10000

## Anti-Krüppel-like factor 15 KLF15 Monoclonal Antibody (M03661) Images



Western Blot analysis using KLF15 Monoclonal Antibody against HepG2 (1) and SMMC-7721 (2) cell lysate.

### Submit a product review to Biocompare.com

Submit a review of this product to Biocompare.com to receive a \$20 Amazon.com giftcard! Your reviews help your fellow scientists make the right decisions. Thank you for your contribution.



Anti-Krüppel-like factor 15 KLF15 Monoclonal Antibody

For Research Use Only. Not for use in diagnostic procedures.