

Anti-CD162 Monoclonal Antibody

Catalog Number: M03674-1

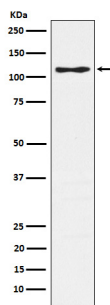
Overview

| | |
|----------------------|----------------------------------------------------------------------------------------------------------------------------------------------------------------------------------------------------------------------------------------------------------------------------------------------------------------------------------------------------------------------------------------------------------------------------------------------------|
| Product Name | Anti-CD162 Monoclonal Antibody |
| Reactive Species | Human |
| Description | Boster Bio Anti-CD162 Monoclonal Antibody catalog # M03674-1. Tested in WB, IHC, ICC/IF, IP applications. This antibody reacts with Human. |
| Application | IP, IF, IHC, ICC, WB |
| Clonality | Monoclonal AEHF-19 |
| Formulation | Rabbit IgG in stabilizing components, phosphate buffered saline, pH 7.4, 150mM NaCl, 0.02% sodium azide and 50% glycerol. *This antibody is supplied in a stabilized formulation. Compatibility with conjugation reactions depends on the chemistry of the conjugation method used. For conjugation methods that are not compatible with the stabilizing components present in this formulation, a carrier-free antibody format is required. |
| Storage Instructions | Store at -20°C for one year. For short term storage and frequent use, store at 4°C for up to one month. Avoid repeated freeze-thaw cycles. |
| Host | Rabbit |
| Uniprot ID | Q14242 |

Technical Details

| | |
|---------------------|-------------------------------------------------------------------------------------------------------------------------------------------------------------------------------------------------------------------------------------------------------------------------------------------------------------------------|
| Immunogen | A synthesized peptide derived from human CD162 A SLe (x) -type proteoglycan, which through high affinity, calcium-dependent interactions with E-, P- and L-selectins, mediates rapid rolling of leukocytes over vascular surfaces during the initial steps in inflammation. Critical for the initial leukocyte capture. |
| Isotype | Rabbit IgG |
| Form | Liquid |
| Concentration | 0.5mg/ml |
| Purification | Affinity-chromatography |
| Suggested Dilutions | WB 1:500-2000 IHC 1:50-200 ICC/IF 1:50-200 IP 1:40 |

Anti-CD162 Monoclonal Antibody (M03674-1) Images



Western blot analysis of CD162 expression in Jurkat cell lysate.

Submit a product review to Biocompare.com

Submit a review of this product to Biocompare.com to receive a \$20 Amazon.com giftcard! Your reviews help your fellow scientists make the right decisions. Thank you for your contribution.



Anti-CD162 Monoclonal Antibody

For Research Use Only. Not for use in diagnostic procedures.