

Anti-MAML2 Antibody (Center)

Catalog Number: M03679-1

About MAML2

Acts as a transcriptional coactivator for NOTCH proteins. Has been shown to amplify NOTCH-induced transcription of HES1. Potentiates activation by NOTCH3 and NOTCH4 more efficiently than MAML1 or MAML3.

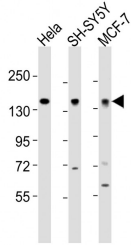
Overview

Product Name	Anti-MAML2 Antibody (Center)
Reactive Species	Human
Description	Boster Bio Anti-MAML2 Antibody (Center) (Catalog # M03679-1). Tested in WB, IHC-P application(s). This antibody reacts with Human.
Application	IHC-P, WB
Clonality	Polyclonal
Formulation	Purified polyclonal antibody supplied in PBS with 0.09% (W/V) sodium azide.
Storage Instructions	Maintain refrigerated at 2-8°C for up to 2 weeks. For long-term storage, store at -20°C in small aliquots to prevent freeze-thaw cycles.
Host	Rabbit
Uniprot ID	Q8IZL2

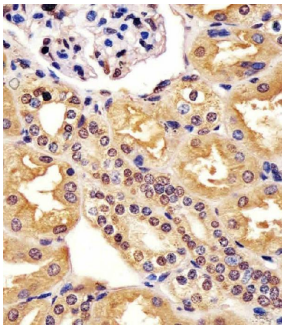
Technical Details

Immunogen	This MAML2 antibody is generated from a rabbit immunized with a KLH conjugated synthetic peptide between 780-814 amino acids from the Central region of human MAML2.
Predicted Reactive Species	Bovine, Rabbit
Isotype	Rabbit IgG
Purification	This antibody is purified through a protein A column, followed by peptide affinity purification.
Suggested Dilutions	WB: 1:2000 IHC-P: 1:25

Anti-MAML2 Antibody (Center) (M03679-1) Images



All lanes : Anti-MAML2 Antibody (Center) at 1:2000 dilution
Lane 1: HeLa whole cell lysates
Lane 2: SH-SY5Y whole cell lysates
Lane 3: MCF-7 whole cell lysates
Lysates/proteins at 20 μ g per lane. Secondary Goat Anti-Rabbit IgG, (H+L), Peroxidase conjugated at 1/10000 dilution
Predicted band size : 125 kDa
Blocking/Dilution buffer: 5% NFDM/TBST.



M03679-1 staining MAML2 in human kidney tissue sections by Immunohistochemistry (IHC-P -paraformaldehyde-fixed, paraffin-embedded sections). Tissue was fixed with formaldehyde and blocked with 3% BSA for 0.5 hour at room temperature; antigen retrieval was by heat mediation with a citrate buffer (pH6). Samples were incubated with primary antibody (1/25) for 1 hours at 37°C. A undiluted biotinylated goat polyvalent antibody was used as the secondary antibody.

Submit a product review to [Biocompare.com](https://www.biocompare.com)

Submit a review of this product to [Biocompare.com](https://www.biocompare.com) to receive a \$20 Amazon.com giftcard! Your reviews help your fellow scientists make the right decisions. Thank you for your contribution.



Anti-MAML2 Antibody (Center)

For Research Use Only. Not for use in diagnostic procedures.