

Anti-WAPL Rabbit Monoclonal Antibody

Catalog Number: M03684

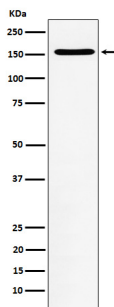
Overview

Product Name	Anti-WAPL Rabbit Monoclonal Antibody
Reactive Species	Human
Description	Boster Bio Anti-WAPL Rabbit Monoclonal Antibody catalog # M03684. Tested in WB, ICC/IF, IP applications. This antibody reacts with Human.
Application	IP, IF, ICC, WB
Clonality	Monoclonal 22W59
Formulation	Rabbit IgG in stabilizing components, phosphate buffered saline, pH 7.4, 150mM NaCl, 0.02% sodium azide and 50% glycerol. *This antibody is supplied in a stabilized formulation. Compatibility with conjugation reactions depends on the chemistry of the conjugation method used. For conjugation methods that are not compatible with the stabilizing components present in this formulation, a carrier-free antibody format is required.
Storage Instructions	Store at -20°C for one year. For short term storage and frequent use, store at 4°C for up to one month. Avoid repeated freeze-thaw cycles.
Host	Rabbit
Uniprot ID	Q7Z5K2

Technical Details

Immunogen	A synthesized peptide derived from human WAPL
Isotype	IgG
Form	Liquid
Concentration	0.5mg/ml
Purification	Affinity-chromatography
Suggested Dilutions	WB 1:500-2000 ICC/IF 1:50-200 IP 1:50

Anti-WAPL Rabbit Monoclonal Antibody (M03684) Images



Western blot analysis of WAPL expression in Jurkat cell lysate.

Submit a product review to Biocompare.com

Submit a review of this product to Biocompare.com to receive a \$20 Amazon.com giftcard! Your reviews help your fellow scientists make the right decisions. Thank you for your contribution.



Anti-WAPL Rabbit Monoclonal Antibody

For Research Use Only. Not for use in diagnostic procedures.