

## Anti-Renin (REN) Mouse Monoclonal Antibody [Clone ID: OTI2F10]

Catalog Number: M03689

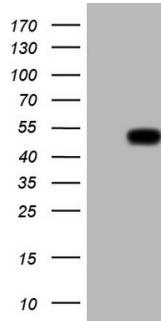
### Overview

Product Name	Anti-Renin (REN) Mouse Monoclonal Antibody [Clone ID: OTI2F10]
Reactive Species	Human
Description	Boster Bio REN mouse monoclonal antibody, clone OTI2F10 (formerly 2F10). Catalog# M03689. Tested in IHC, WB. This antibody reacts with Human.
Application	IHC, WB
Clonality	Monoclonal OTI2F10
Formulation	PBS (pH 7.3) containing 1% stabilizing protein, 50% glycerol and 0.02% sodium azide. This antibody is supplied in a stabilized formulation. Compatibility with conjugation reactions depends on the chemistry of the conjugation method used. For conjugation methods that are not compatible with the stabilizing components present in this formulation, a carrier-free antibody format is required.
Storage Instructions	Store at -20°C as received.
Host	Mouse
Uniprot ID	P00797

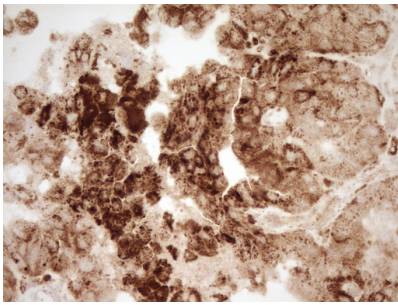
### Technical Details

Immunogen	Human recombinant protein fragment corresponding to amino acids 131-406 of human REN (NP_000528) produced in E.coli.
Isotype	IgG1
Concentration	1 mg/ml
Purification	Purified from mouse ascites fluids or tissue culture supernatant by affinity chromatography (protein A/G)
Suggested Dilutions	WB 1:2000 IHC 1:150

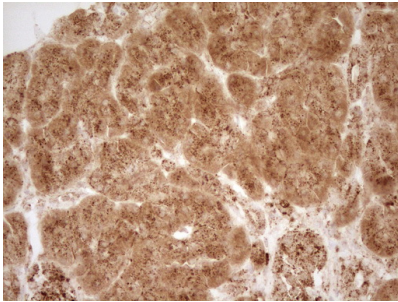
## Anti-Renin (REN) Mouse Monoclonal Antibody [Clone ID: OTI2F10] (M03689) Images



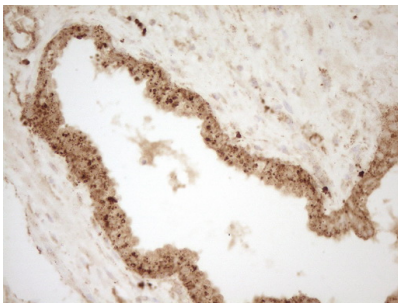
HEK293T cells were transfected with the pCMV6-ENTRY control (Left lane) or pCMV6-ENTRY REN (Right lane) cDNA for 48 hrs and lysed. Equivalent amounts of cell lysates (5 ug per lane) were separated by SDS-PAGE and immunoblotted with anti-REN.



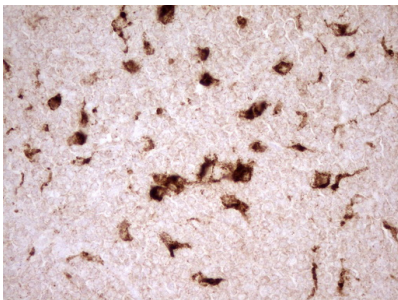
Immunohistochemical staining of paraffin-embedded Adenocarcinoma of Human ovary tissue using anti-REN mouse monoclonal antibody. (Heat-induced epitope retrieval by 1 mM EDTA in 10mM Tris)



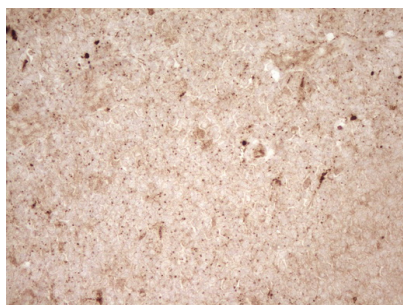
Immunohistochemical staining of paraffin-embedded Human pancreas tissue within the normal limits using anti-REN mouse monoclonal antibody. (Heat-induced epitope retrieval by 1 mM EDTA in 10mM Tris)



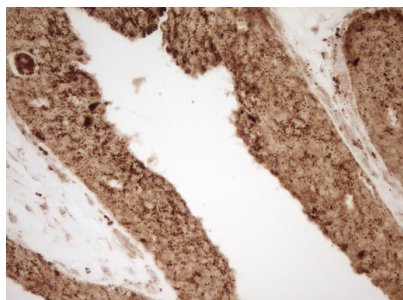
Immunohistochemical staining of paraffin-embedded Carcinoma of Human prostate tissue using anti-REN mouse monoclonal antibody. (Heat-induced epitope retrieval by 1 mM EDTA in 10mM Tris)



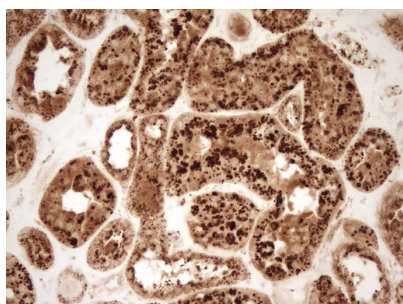
Immunohistochemical staining of paraffin-embedded Human lymphoma tissue using anti-REN mouse monoclonal antibody. (Heat-induced epitope retrieval by 1 mM EDTA in 10mM Tris)



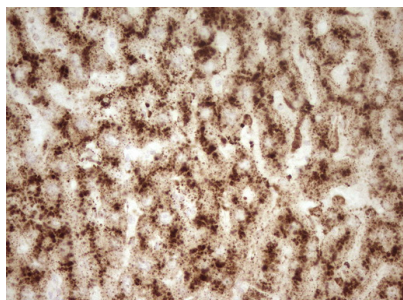
Immunohistochemical staining of paraffin-embedded Human tonsil within the normal limits using anti-REN mouse monoclonal antibody. (Heat-induced epitope retrieval by 1 mM EDTA in 10mM Tris)



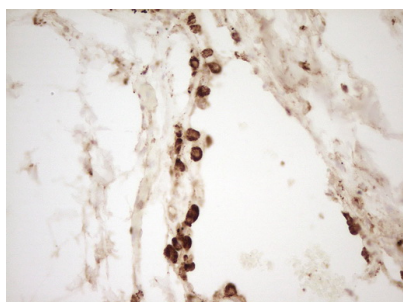
Immunohistochemical staining of paraffin-embedded Adenocarcinoma of Human breast tissue using anti-REN mouse monoclonal antibody. (Heat-induced epitope retrieval by 1 mM EDTA in 10mM Tris)



Immunohistochemical staining of paraffin-embedded Human Kidney tissue within the normal limits using anti-REN mouse monoclonal antibody. (Heat-induced epitope retrieval by 1 mM EDTA in 10mM Tris)



Immunohistochemical staining of paraffin-embedded Human liver tissue within the normal limits using anti-REN mouse monoclonal antibody. (Heat-induced epitope retrieval by 1 mM EDTA in 10mM Tris)



Immunohistochemical staining of paraffin-embedded Human lung tissue within the normal limits using anti-REN mouse monoclonal antibody. (Heat-induced epitope retrieval by 1 mM EDTA in 10mM Tris)

Submit a review of this product to Biocompare.com to receive a \$20 Amazon.com giftcard! Your reviews help your fellow scientists make the right decisions. Thank you for your contribution.



Anti-Renin (REN) Mouse Monoclonal Antibody [Clone ID: OTI2F10]

For Research Use Only. Not for use in diagnostic procedures.