

## Anti-Cbl c (CBLC) Mouse Monoclonal Antibody [Clone ID: OTI4E3]

Catalog Number: M03693

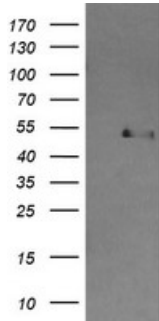
### Overview

Product Name	Anti-Cbl c (CBLC) Mouse Monoclonal Antibody [Clone ID: OTI4E3]
Reactive Species	Human
Description	Boster Bio CBLC mouse monoclonal antibody, clone OTI4E3 (formerly 4E3). Catalog# M03693. Tested in FC, WB. This antibody reacts with Human.
Application	Flow Cytometry, WB
Clonality	Monoclonal OTI4E3
Formulation	PBS (pH 7.3) containing 1% stabilizing protein, 50% glycerol and 0.02% sodium azide. This antibody is supplied in a stabilized formulation. Compatibility with conjugation reactions depends on the chemistry of the conjugation method used. For conjugation methods that are not compatible with the stabilizing components present in this formulation, a carrier-free antibody format is required.
Storage Instructions	Store at -20°C as received.
Host	Mouse
Uniprot ID	Q9ULV8

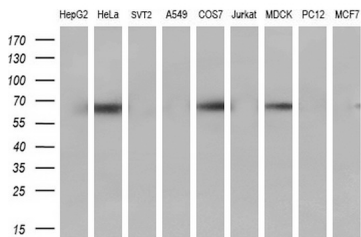
### Technical Details

Immunogen	Human recombinant protein fragment corresponding to amino acids 244-474 of human CBLC (NP_036248) produced in HEK293T cell.
Isotype	IgG1
Concentration	1 mg/ml
Purification	Purified from mouse ascites fluids or tissue culture supernatant by affinity chromatography (protein A/G)
Suggested Dilutions	WB 1:500 Flow Cytometry 1:100

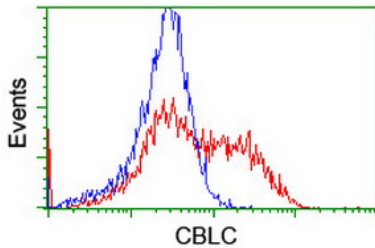
## Anti-Cbl c (CBLC) Mouse Monoclonal Antibody [Clone ID: OTI4E3] (M03693) Images



HEK293T cells were transfected with the pCMV6-ENTRY control (Left lane) or pCMV6-ENTRY CBLC (Right lane) cDNA for 48 hrs and lysed. Equivalent amounts of cell lysates (5 ug per lane) were separated by SDS-PAGE and immunoblotted with anti-CBLC.



Western blot analysis of extracts (35ug) from 9 different cell lines by using anti-CBLC monoclonal antibody (HepG2: human; HeLa: human; SVT2: mouse; A549: human; COS7: monkey; Jurkat: human; MDCK: canine; PC12: rat; MCF7: human) (1:200).



HEK293T cells transfected with either CBLC (Myc-DDK-tagged) overexpress plasmid (Red) or empty vector control plasmid (Blue) were immunostained by anti-CBLC antibody (M03693)

### Submit a product review to [Biocompare.com](https://www.biocompare.com)

Submit a review of this product to [Biocompare.com](https://www.biocompare.com) to receive a \$20 Amazon.com giftcard! Your reviews help your fellow scientists make the right decisions. Thank you for your contribution.



Anti-Cbl c (CBLC) Mouse Monoclonal Antibody [Clone ID: OTI4E3]

For Research Use Only. Not for use in diagnostic procedures.