

## Anti-RbAp46 (RBBP7) Mouse Monoclonal Antibody [Clone ID: OTI4C9]

Catalog Number: M03708-1

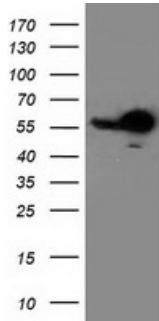
### Overview

Product Name	Anti-RbAp46 (RBBP7) Mouse Monoclonal Antibody [Clone ID: OTI4C9]
Reactive Species	Human, Mouse, Rat
Description	Boster Bio RBBP7 (RbAp46) mouse monoclonal antibody, clone OTI4C9 (formerly 4C9). Catalog# M03708-1. Tested in FC, IHC, WB. This antibody reacts with Human, Mouse, Rat.
Application	Flow Cytometry, IHC, WB
Clonality	Monoclonal OTI4C9
Formulation	PBS (pH 7.3) containing 1% stabilizing protein, 50% glycerol and 0.02% sodium azide. This antibody is supplied in a stabilized formulation. Compatibility with conjugation reactions depends on the chemistry of the conjugation method used. For conjugation methods that are not compatible with the stabilizing components present in this formulation, a carrier-free antibody format is required.
Storage Instructions	Store at -20°C as received.
Host	Mouse
Uniprot ID	Q16576

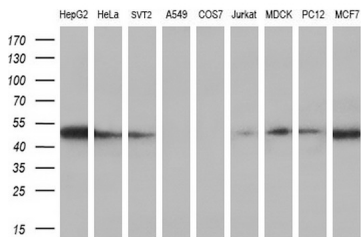
### Technical Details

Immunogen	Full length human recombinant protein of human RBBP7 (NP_002884) produced in HEK293T cell.
Isotype	IgG2b
Concentration	0.8 mg/ml
Purification	Purified from mouse ascites fluids or tissue culture supernatant by affinity chromatography (protein A/G)
Suggested Dilutions	WB 1:2000 IHC 1:150 Flow Cytometry 1:100

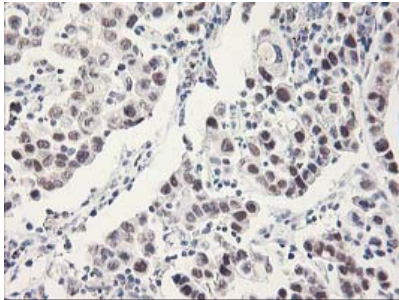
## Anti-RbAp46 (RBBP7) Mouse Monoclonal Antibody [Clone ID: OTI4C9] (M03708-1) Images



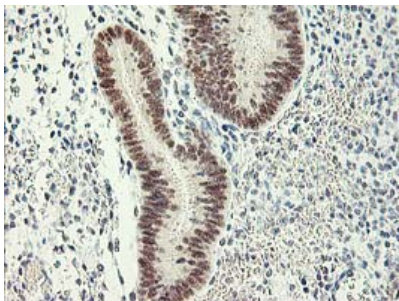
HEK293T cells were transfected with the pCMV6-ENTRY control (Left lane) or pCMV6-ENTRY RBBP7 (Right lane) cDNA for 48 hrs and lysed. Equivalent amounts of cell lysates (5 ug per lane) were separated by SDS-PAGE and immunoblotted with anti-RBBP7.



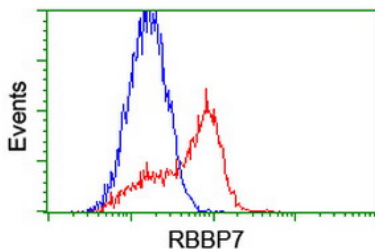
Western blot analysis of extracts (35ug) from 9 different cell lines by using anti-RBBP7 monoclonal antibody (HepG2: human; HeLa: human; SVT2: mouse; A549: human; COS7: monkey; Jurkat: human; MDCK: canine; PC12: rat; MCF7: human) (1:200).



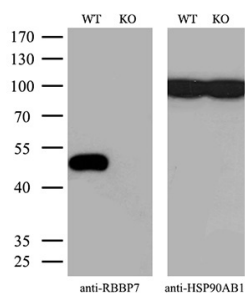
Immunohistochemical staining of paraffin-embedded Carcinoma of Human lung tissue using anti-RBBP7 mouse monoclonal antibody. (Heat-induced epitope retrieval by 10mM citric buffer)



Immunohistochemical staining of paraffin-embedded Human endometrium tissue within the normal limits using anti-RBBP7 mouse monoclonal antibody. (Heat-induced epitope retrieval by 10mM citric buffer)



HEK293T cells transfected with either RBBP7 (Myc-DDK-tagged) overexpress plasmid (Red) or empty vector control plasmid (Blue) were immunostained by anti-RBBP7 antibody (M03708-1)



Equivalent amounts of cell lysates (10 ug per lane) of wild-type HeLa cells (WT) and RBBP7-Knockout HeLa cells (KO) were separated by SDS-PAGE and immunoblotted with anti-RBBP7 monoclonal antibody M03708-1. Then the blotted membrane was stripped and reprobed with anti-HSP90AB1 antibody as a loading control (1:500).

## Submit a product review to Biocompare.com

Submit a review of this product to Biocompare.com to receive a \$20 Amazon.com giftcard! Your reviews help your fellow scientists make the right decisions. Thank you for your contribution.



Anti-RbAp46 (RBBP7) Mouse Monoclonal Antibody [Clone ID: OTI4C9]

For Research Use Only. Not for use in diagnostic procedures.