

## Anti-PAG1 Purified Monoclonal Antibody

Catalog Number: M03711

### About PAG1

PAG (phosphoprotein associated with GEMs), also known as Cbp (Csk-binding protein), is a ubiquitously expressed 46 kDa transmembrane adaptor protein present in membrane rafts (glycosphingolipid-enriched microdomains), which however migrates on SDS PAGE gels anomalously as an 80 kDa molecule. Following tyrosine phosphorylation by Src family kinases, PAG binds and thereby activates the protein tyrosine kinase Csk, the major negative regulator of the Src family kinases. Signaling via the B-cell receptor in B cells or high affinity IgE receptor (FcεRI) in mast cells leads to PAG increased tyrosine phosphorylation and Csk binding, while T cell receptor signaling causes PAG dephosphorylation, loss of Csk binding and increased activation of the protein tyrosine kinase Lck.

### Overview

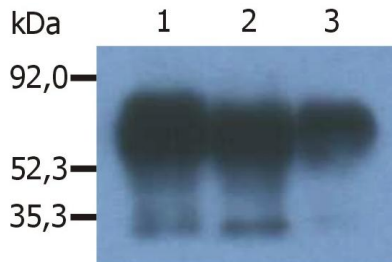
Product Name	Anti-PAG1 Purified Monoclonal Antibody
Reactive Species	Cow, Human, Mouse, Rat
Description	Boster Bio Anti-PAG1 Purified Monoclonal Antibody (Catalog# M03711). Tested in IP, WB, IHC-P application(s). This antibody reacts with Rat, Cow, Human, Mouse.
Application	IP, IHC-P, WB
Clonality	Monoclonal PAG-C1
Formulation	Phosphate buffered saline (PBS), pH 7.4, 15 mM sodium azide
Storage Instructions	Store at 2-8°C. Do not freeze.
Host	Mouse
Uniprot ID	Q3U1F9

### Technical Details

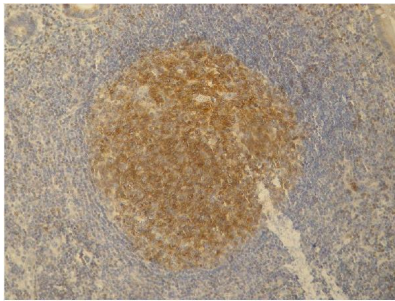
Immunogen	C-terminal peptide (last 15 amino acids) of human Csk binding protein coupled to KLH. The antibody PAG-C1 recognizes an epitope located in the intracellular C-terminal domain of Csk-binding protein (Cbp / PAG), a 46 kDa ubiquitously expressed transmembrane adaptor protein present in membrane rafts (glycosphingolipid-enriched microdomains), which however migrates on SDS PAGE gels anomalously as an 80 kDa molecule.
Predicted Reactive Species	Primate
Cross Reactivity	This antibody does not cross-react with Thy-1.1 alloantigen.
Isotype	Mouse IgG2b
Form	Liquid

Concentration	1 mg/ml
Purification	Purified by protein-A affinity chromatography.
Suggested Dilutions	Immunohistochemistry (paraffin sections): Positive tissue: appendix (germinal center of lymphatic follicle), heat-mediated antigen retrieval in citrate buffer pH 6.1. Immunoprecipitation: Positive control: RAJI human Burkitt lymphoma cell line.

## Anti-PAG1 Purified Monoclonal Antibody (M03711) Images



Immunoprecipitation of human PAG/Cbp from the lysate of RAJI human Burkitt lymphoma cell line. Western blot was immunostained with anti-human PAG (MEM-255). Note: PAG/Cbp is a 46 kDa adaptor protein, which however migrates on SDS PAGE gels anomalously as an 80 kDa molecule. Lane 1,2: immunoprecipitation with anti-PAG (PAG-C1) Lane 3: immunoprecipitation with anti-PAG (polyclonal antibody)



Immunohistochemistry staining (paraffin sections) of PAG/Cbp in germinal center of lymphatic follicle and in dispersed T cells in human appendix tissue by monoclonal antibody PAG-C1. Positive signal in T cells.

### Submit a product review to Biocompare.com

Submit a review of this product to Biocompare.com to receive a \$20 Amazon.com giftcard! Your reviews help your fellow scientists make the right decisions. Thank you for your contribution.



Anti-PAG1 Purified Monoclonal Antibody

For Research Use Only. Not for use in diagnostic procedures.