

Anti-ELF4 Mouse Monoclonal Antibody [Clone ID: OTI2D8]

Catalog Number: M03714

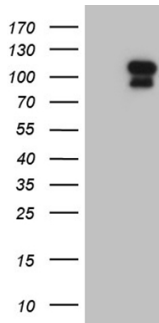
Overview

Product Name	Anti-ELF4 Mouse Monoclonal Antibody [Clone ID: OTI2D8]
Reactive Species	Human
Description	Boster Bio ELF4 mouse monoclonal antibody, clone OTI2D8. Catalog# M03714. Tested in IHC, WB. This antibody reacts with Human.
Application	IHC, WB
Clonality	Monoclonal OTI2D8
Formulation	PBS (pH 7.3) containing 1% stabilizing protein, 50% glycerol and 0.02% sodium azide. This antibody is supplied in a stabilized formulation. Compatibility with conjugation reactions depends on the chemistry of the conjugation method used. For conjugation methods that are not compatible with the stabilizing components present in this formulation, a carrier-free antibody format is required.
Storage Instructions	Store at -20°C as received.
Host	Mouse
Uniprot ID	Q99607

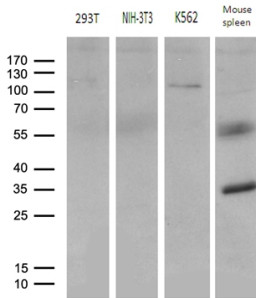
Technical Details

Immunogen	Human recombinant protein fragment corresponding to amino acids 83-345 of human ELF4 (NP_001412) produced in E.coli.
Isotype	IgG2a
Concentration	1 mg/ml
Purification	Purified from mouse ascites fluids or tissue culture supernatant by affinity chromatography (protein A/G)
Suggested Dilutions	WB: 1:500~2000 IHC: 1:500

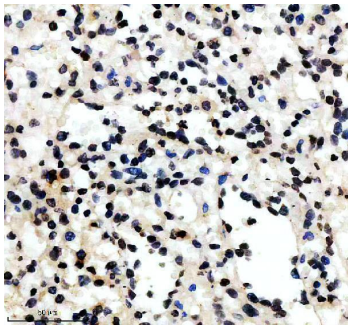
Anti-ELF4 Mouse Monoclonal Antibody [Clone ID: OTI2D8] (M03714) Images



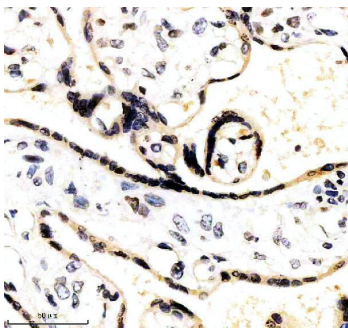
HEK293T cells were transfected with the pCMV6-ENTRY control (Left lane) or pCMV6-ENTRY ELF4 (Right lane) cDNA for 48 hrs and lysed. Equivalent amounts of cell lysates (5 ug per lane) were separated by SDS-PAGE and immunoblotted with anti-ELF4 (1:2000).



Western blot analysis of extracts (35ug) from 3 different cell lines and mouse spleen tissue lysate by using anti-ELF4 monoclonal antibody (1:500).



IHC analysis of ELF4 using anti-ELF4 antibody (M03714). ELF4 was detected in a paraffin-embedded section of human spleen tissue. Heat mediated antigen retrieval was performed in EDTA buffer (pH 8.0, epitope retrieval solution). The tissue section was blocked with 10% goat serum. The tissue section was then incubated with 1:500 mouse anti-ELF4 Antibody (M03714) overnight at 4°C. Peroxidase Conjugated Goat Anti-mouse IgG was used as secondary antibody and incubated for 30 minutes at 37°C. The tissue section was developed using HRP Conjugated Mouse IgG Super Vision Assay Kit (Catalog # SV0001) with DAB as the chromogen.



IHC analysis of ELF4 using anti-ELF4 antibody (M03714). ELF4 was detected in a paraffin-embedded section of human placenta tissue. Heat mediated antigen retrieval was performed in EDTA buffer (pH 8.0, epitope retrieval solution). The tissue section was blocked with 10% goat serum. The tissue section was then incubated with 1:500 mouse anti-ELF4 Antibody (M03714) overnight at 4°C. Peroxidase Conjugated Goat Anti-mouse IgG was used as secondary antibody and incubated for 30 minutes at 37°C. The tissue section was developed using HRP Conjugated Mouse IgG Super Vision Assay Kit (Catalog # SV0001) with DAB as the chromogen.

Submit a review of this product to Biocompare.com to receive a \$20 Amazon.com giftcard! Your reviews help your fellow scientists make the right decisions. Thank you for your contribution.



Anti-ELF4 Mouse Monoclonal Antibody [Clone ID: OTI2D8]

For Research Use Only. Not for use in diagnostic procedures.