

Anti-hSET1 (SETD1A) Mouse Monoclonal Antibody [Clone ID: OTI7B7]

Catalog Number: M03736

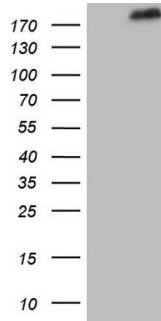
Overview

Product Name	Anti-hSET1 (SETD1A) Mouse Monoclonal Antibody [Clone ID: OTI7B7]
Reactive Species	Human, Mouse
Description	Boster Bio SETD1A mouse monoclonal antibody, clone OTI7B7 (formerly 7B7). Catalog# M03736. Tested in IHC, WB. This antibody reacts with Human, Mouse.
Application	IHC, WB
Clonality	Monoclonal OTI7B7
Formulation	PBS (pH 7.3) containing 1% stabilizing protein, 50% glycerol and 0.02% sodium azide. This antibody is supplied in a stabilized formulation. Compatibility with conjugation reactions depends on the chemistry of the conjugation method used. For conjugation methods that are not compatible with the stabilizing components present in this formulation, a carrier-free antibody format is required.
Storage Instructions	Store at -20°C as received.
Host	Mouse
Uniprot ID	O15047

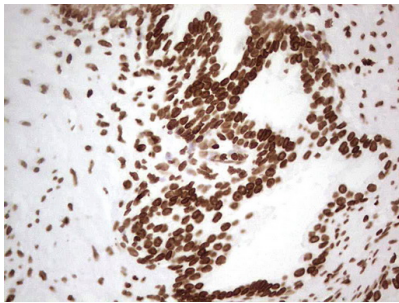
Technical Details

Immunogen	Human recombinant protein fragment corresponding to amino acids 1-320 of human SETD1A (NP_055527) produced in E.coli.
Isotype	IgG1
Concentration	1 mg/ml
Purification	Purified from mouse ascites fluids or tissue culture supernatant by affinity chromatography (protein A/G)
Suggested Dilutions	WB 1:500 IHC 1:150

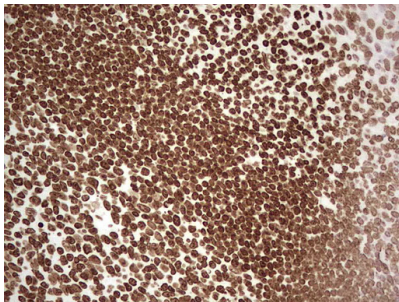
Anti-hSET1 (SETD1A) Mouse Monoclonal Antibody [Clone ID: OTI7B7] (M03736) Images



HEK293T cells were transfected with the pCMV6-ENTRY control (Left lane) or pCMV6-ENTRY SETD1A (Right lane) cDNA for 48 hrs and lysed. Equivalent amounts of cell lysates (5 ug per lane) were separated by SDS-PAGE and immunoblotted with anti-SETD1A.



Immunohistochemical staining of paraffin-embedded Human prostate tissue within the normal limits using anti-SETD1A mouse monoclonal antibody. (Heat-induced epitope retrieval by 1 mM EDTA in 10mM Tris)



Immunohistochemical staining of paraffin-embedded Human tonsil within the normal limits using anti-SETD1A mouse monoclonal antibody. (Heat-induced epitope retrieval by 1 mM EDTA in 10mM Tris)

Submit a product review to Biocompare.com

Submit a review of this product to Biocompare.com to receive a \$20 Amazon.com giftcard! Your reviews help your fellow scientists make the right decisions. Thank you for your contribution.



Anti-hSET1 (SETD1A) Mouse Monoclonal Antibody [Clone ID: OTI7B7]

For Research Use Only. Not for use in diagnostic procedures.