

## Anti-NEK6 Mouse Monoclonal Antibody [Clone ID: OTI5D7]

Catalog Number: M03740

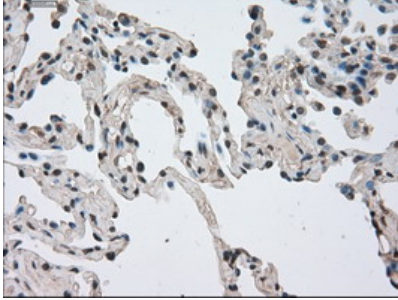
### Overview

Product Name	Anti-NEK6 Mouse Monoclonal Antibody [Clone ID: OTI5D7]
Reactive Species	Human, Mouse, Rat
Description	Boster Bio NEK6 mouse monoclonal antibody, clone OTI5D7 (formerly 5D7). Catalog# M03740. Tested in FC, IF, IHC. This antibody reacts with Human, Mouse, Rat.
Application	Flow Cytometry, IF, IHC
Clonality	Monoclonal OTI5D7
Formulation	PBS (pH 7.3) containing 1% stabilizing protein, 50% glycerol and 0.02% sodium azide. This antibody is supplied in a stabilized formulation. Compatibility with conjugation reactions depends on the chemistry of the conjugation method used. For conjugation methods that are not compatible with the stabilizing components present in this formulation, a carrier-free antibody format is required.
Storage Instructions	Store at -20°C as received.
Host	Mouse
Uniprot ID	Q9HC98

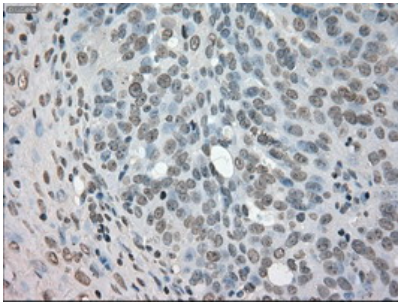
### Technical Details

Immunogen	Full length human recombinant protein of human NEK6 (NP_055212) produced in HEK293T cell.
Isotype	IgG1
Concentration	0.75 mg/ml
Purification	Purified from mouse ascites fluids or tissue culture supernatant by affinity chromatography (protein A/G)
Suggested Dilutions	IHC 1:50 IF 1:100 FLOW 1:100

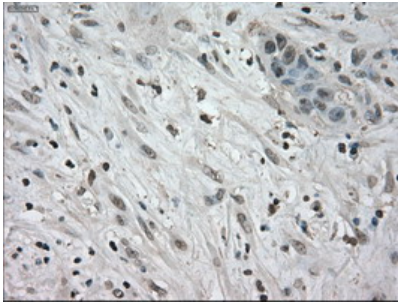
## Anti-NEK6 Mouse Monoclonal Antibody [Clone ID: OTI5D7] (M03740) Images



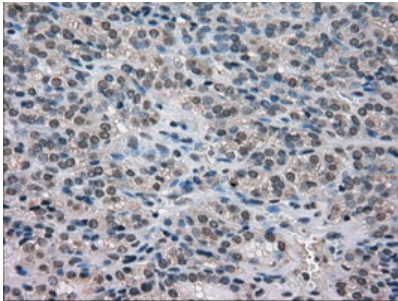
Immunohistochemical staining of paraffin-embedded Carcinoma of Human lung tissue using anti-NEK6 mouse monoclonal antibody. (Heat-induced epitope retrieval by 10mM citric buffer)



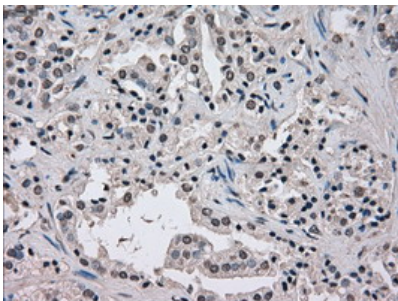
Immunohistochemical staining of paraffin-embedded Adenocarcinoma of Human ovary tissue using anti-NEK6 mouse monoclonal antibody. (Heat-induced epitope retrieval by 10mM citric buffer)



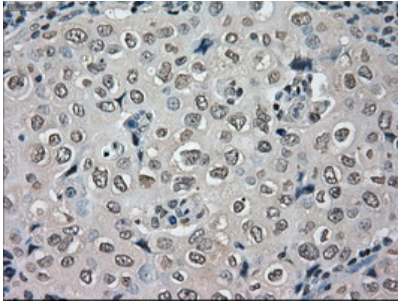
Immunohistochemical staining of paraffin-embedded Carcinoma of Human pancreas tissue using anti-NEK6 mouse monoclonal antibody. (Heat-induced epitope retrieval by 10mM citric buffer)



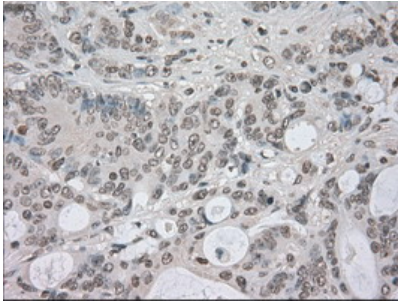
Immunohistochemical staining of paraffin-embedded Carcinoma of Human thyroid tissue using anti-NEK6 mouse monoclonal antibody. (Heat-induced epitope retrieval by 10mM citric buffer)



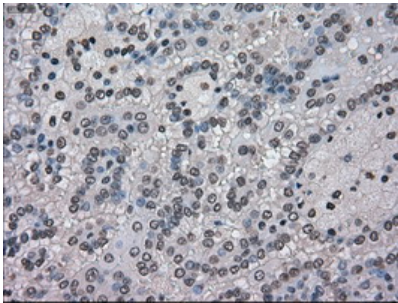
Immunohistochemical staining of paraffin-embedded Carcinoma of Human prostate tissue using anti-NEK6 mouse monoclonal antibody. (Heat-induced epitope retrieval by 10mM citric buffer)



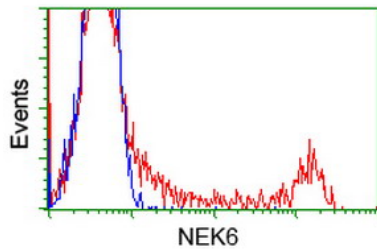
Immunohistochemical staining of paraffin-embedded Adenocarcinoma of Human breast tissue using anti-NEK6 mouse monoclonal antibody. (Heat-induced epitope retrieval by 10mM citric buffer)



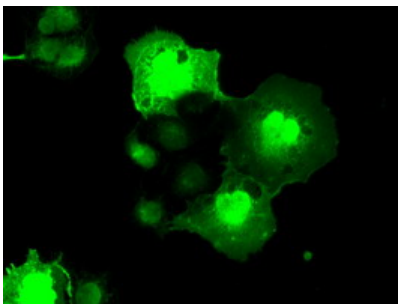
Immunohistochemical staining of paraffin-embedded Adenocarcinoma of Human colon tissue using anti-NEK6 mouse monoclonal antibody. (Heat-induced epitope retrieval by 10mM citric buffer)



Immunohistochemical staining of paraffin-embedded Carcinoma of Human kidney tissue using anti-NEK6 mouse monoclonal antibody. (Heat-induced epitope retrieval by 10mM citric buffer)



HEK293T cells transfected with either NEK6 (Myc-DDK-tagged) overexpress plasmid (Red) or empty vector control plasmid (Blue) were immunostained by anti-NEK6 antibody (M03740)



Anti-NEK6 mouse monoclonal antibody (M03740) immunofluorescent staining of COS7 cells transiently transfected by pCMV6-ENTRY NEK6.

Submit a product review to [Biocompare.com](https://www.biocompare.com)

Submit a review of this product to [Biocompare.com](https://www.biocompare.com) to receive a \$20 Amazon.com giftcard! Your



reviews help your fellow scientists make the right decisions. Thank you for your contribution.

Anti-NEK6 Mouse Monoclonal Antibody [Clone ID: OT15D7]

For Research Use Only. Not for use in diagnostic procedures.