

Anti-CD20 Reference Antibody (rituximab)

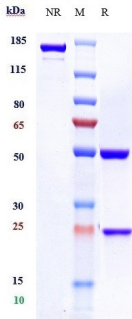
Catalog Number: M03780-6

Overview

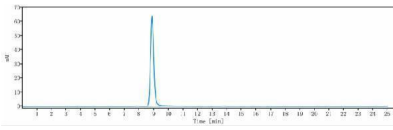
Product Name	Anti-CD20 Reference Antibody (rituximab)
Reactive Species	Cynomolgus monkey, Human
Description	Boster Bio Anti-CD20 Reference Antibody (rituximab) (Catalog # M03780-6). Tested in Flow Cytometry, ELISA, FTA. This antibody reacts with Cynomolgus monkey, Human. Endotoxin: < 0.014EU/ug,determined by LAL method. Expression system: CHO Cell
Application	ELISA, Flow Cytometry, Functional Assay, Kinetics
Clonality	Monoclonal
Storage Instructions	Maintain refrigerated at 2-8°C for up to 2 weeks. For long-term storage, aliquot and store at -20°C to avoid repeated freeze-thaw cycles.
Uniprot ID	P11836

Technical Details

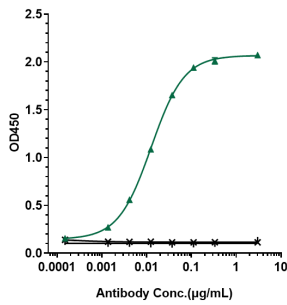
Anti-CD20 Reference Antibody (rituximab) (M03780-6) Images



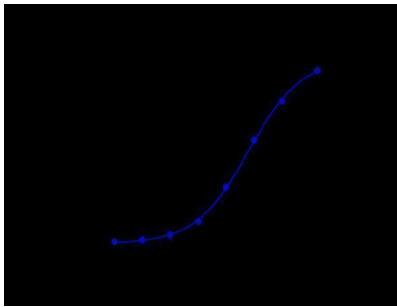
Anti-CD20 Reference Antibody (rituximab) on SDS-PAGE under reducing (R) condition. The gel was stained with Coomassie Blue. The purity of the protein is greater than 95%



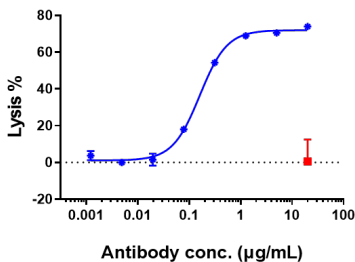
The purity of Anti-CD20 Reference Antibody (rituximab) is more than 98.97%



Immobilized human EGFR His at 2 μg/mL can bind Anti-CD20 Reference Antibody (rituximab)

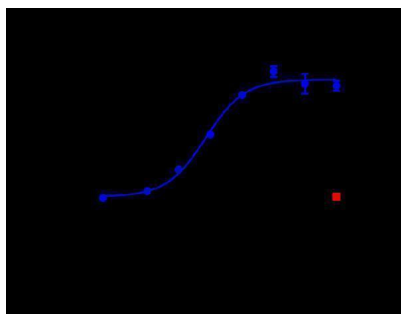


Raji cells were stained with Anti-CD20 Reference Antibody (rituximab) and negative control protein respectively



Anti-CD20 Reference Antibody (rituximab)-induced CDC activity was evaluated using Raji Cell. The max Lysis rate was approximately 74%.

Anti-CD20 Reference Antibody (rituximab)-induced ADCC activity was evaluated using Raji Cell. The max Lysis rate was approximately 35%.



Submit a product review to Biocompare.com

Submit a review of this product to Biocompare.com to receive a \$20 Amazon.com giftcard! Your reviews help your fellow scientists make the right decisions. Thank you for your contribution.



Anti-CD20 Reference Antibody (rituximab)

For Research Use Only. Not for use in diagnostic procedures.