

Anti-USP10 Mouse Monoclonal Antibody [Clone ID: OTI2E1]

Catalog Number: M03786-1

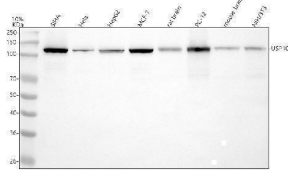
Overview

| | |
|----------------------|--|
| Product Name | Anti-USP10 Mouse Monoclonal Antibody [Clone ID: OTI2E1] |
| Reactive Species | Dog, Human, Monkey, Mouse, Rat |
| Description | Boster Bio USP10 mouse monoclonal antibody, clone OTI2E1 (formerly 2E1). Catalog# M03786-1. Tested in FC, IF, IHC, WB. This antibody reacts with Human, Monkey, Mouse, Rat, Dog. |
| Conjugate | Unconjugated |
| Application | Flow Cytometry, IF, IHC, WB |
| Clonality | Monoclonal OTI2E1 |
| Formulation | PBS (pH 7.3) containing 1% stabilizing protein, 50% glycerol and 0.02% sodium azide. This antibody is supplied in a stabilized formulation. Compatibility with conjugation reactions depends on the chemistry of the conjugation method used. For conjugation methods that are not compatible with the stabilizing components present in this formulation, a carrier-free antibody format is required. |
| Storage Instructions | Store at -20°C for one year. For short term storage and frequent use, store at 4°C for up to one month. Avoid repeated freeze-thaw cycles. |
| Host | Mouse |
| Uniprot ID | Q14694 |

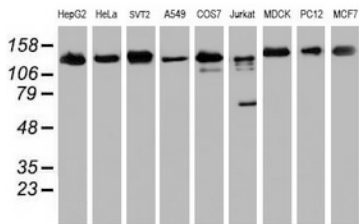
Technical Details

| | |
|---------------------|---|
| Immunogen | Full length human recombinant protein of human USP10 (NP_005144) produced in HEK293T cell. |
| Isotype | IgG1 |
| Concentration | 1 mg/ml |
| Purification | Purified from mouse ascites fluids or tissue culture supernatant by affinity chromatography (protein A/G) |
| Suggested Dilutions | WB: 1:500~2000 IHC: 1:150 IF: 1:100 Flow cytometry: 1:100 |

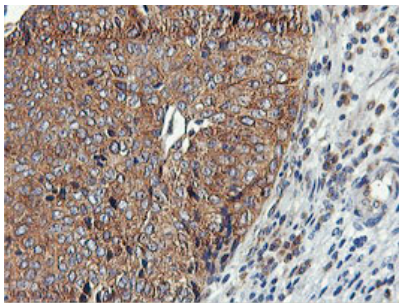
Anti-USP10 Mouse Monoclonal Antibody [Clone ID: OTI2E1] (M03786-1) Images



Western blot analysis of USP10 using anti-USP10 antibody (M03786-1). Electrophoresis was performed on a 5-20% SDS-PAGE gel at 70V (Stacking gel) / 90V (Resolving gel) for 2-3 hours. The sample well of each lane was loaded with 30 ug of sample under reducing conditions. Lane 1: human SiHa whole cell lysates, Lane 2: human HeLa whole cell lysates, Lane 3: human HepG2 whole cell lysates, Lane 4: human MCF-7 whole cell lysates, Lane 5: rat brain tissue lysates, Lane 6: rat PC-12 whole cell lysates, Lane 7: mouse brain tissue lysates, Lane 8: mouse NIH/3T3 whole cell lysates. After electrophoresis, proteins were transferred to a nitrocellulose membrane at 150 mA for 50-90 minutes. Blocked the membrane with 5% non-fat milk/TBS for 1.5 hour at RT. The membrane was incubated with mouse anti-USP10 antigen affinity purified monoclonal antibody (Catalog # M03786-1) at 1:1000 overnight at 4°C, then washed with TBS-0.1%Tween 3 times with 5 minutes each and probed with a goat anti-mouse IgG-HRP secondary antibody at a dilution of 1:500 for 1.5 hour at RT. The signal is developed using an Enhanced Chemiluminescent detection (ECL) kit (Catalog # EK1001) with Tanon 5200 system. A specific band was detected for USP10 at approximately 110 kDa. The expected band size for USP10 is at 87 kDa.

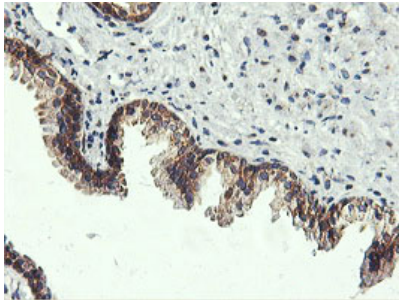
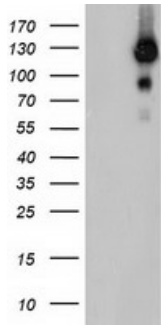


Western blot analysis of extracts (35ug) from 9 different cell lines by using anti-USP10 monoclonal antibody.

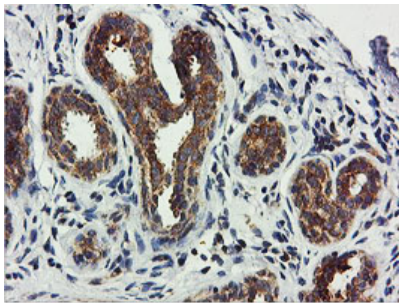


Immunohistochemical staining of paraffin-embedded Carcinoma of Human bladder tissue using anti-USP10 mouse monoclonal antibody. (Heat-induced epitope retrieval by 10mM citric buffer)

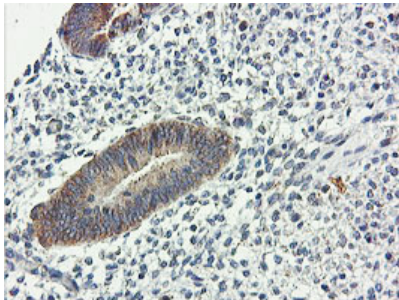
HEK293T cells were transfected with the pCMV6-ENTRY control (Left lane) or pCMV6-ENTRY USP10 (Right lane) cDNA for 48 hrs and lysed. Equivalent amounts of cell lysates (5 ug per lane) were separated by SDS-PAGE and immunoblotted with anti-USP10.



Immunohistochemical staining of paraffin-embedded Human prostate tissue within the normal limits using anti-USP10 mouse monoclonal antibody. (Heat-induced epitope retrieval by 10mM citric buffer)



Immunohistochemical staining of paraffin-embedded Human breast tissue within the normal limits using anti-USP10 mouse monoclonal antibody. (Heat-induced epitope retrieval by 10mM citric buffer)

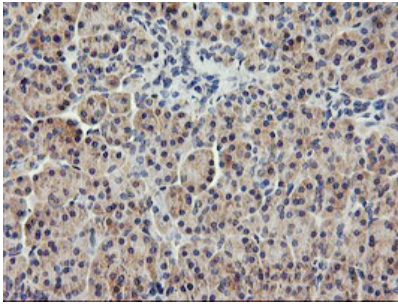


Immunohistochemical staining of paraffin-embedded Human endometrium tissue within the normal limits using anti-USP10 mouse monoclonal antibody. (Heat-induced epitope retrieval by 10mM citric buffer)

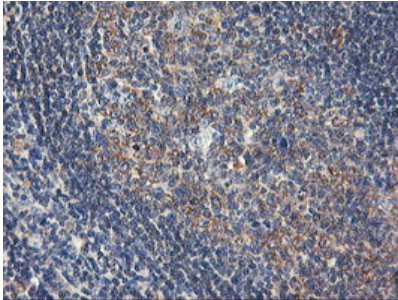


Immunohistochemical staining of paraffin-embedded Adenocarcinoma of Human endometrium tissue using anti-USP10 mouse monoclonal antibody. (Heat-induced epitope retrieval by 10mM citric buffer)

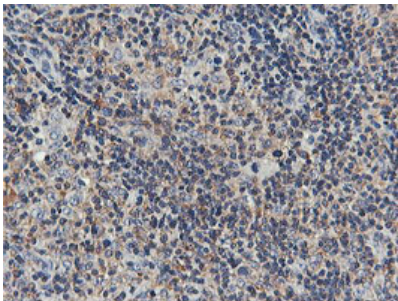
Immunohistochemical staining of paraffin-embedded Human pancreas tissue within the normal limits using anti-USP10



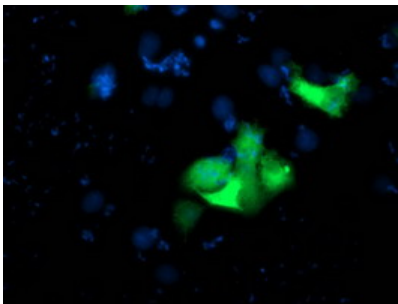
mouse monoclonal antibody. (Heat-induced epitope retrieval by 10mM citric buffer)



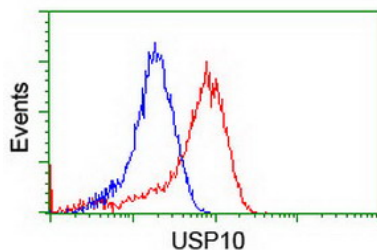
Immunohistochemical staining of paraffin-embedded Human tonsil within the normal limits using anti-USP10 mouse monoclonal antibody. (Heat-induced epitope retrieval by 10mM citric buffer)



Immunohistochemical staining of paraffin-embedded Human lymphoma tissue using anti-USP10 mouse monoclonal antibody. (Heat-induced epitope retrieval by 10mM citric buffer)



Anti-USP10 mouse monoclonal antibody (M03786-1) immunofluorescent staining of COS7 cells transiently transfected by pCMV6-ENTRY USP10.



Flow cytometric Analysis of HeLa cells

Submit a product review to Biocompare.com

Submit a review of this product to Biocompare.com to receive a \$20 Amazon.com giftcard! Your



reviews help your fellow scientists make the right decisions. Thank you for your contribution.

Anti-USP10 Mouse Monoclonal Antibody [Clone ID: OTI2E1]

For Research Use Only. Not for use in diagnostic procedures.