

## Anti-SH3PX1 (SNX9) Mouse Monoclonal Antibody [Clone ID: OTI1E2]

Catalog Number: M03796

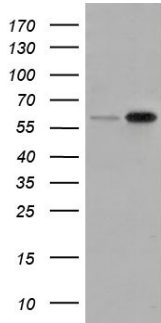
### Overview

Product Name	Anti-SH3PX1 (SNX9) Mouse Monoclonal Antibody [Clone ID: OTI1E2]
Reactive Species	Dog, Human, Monkey, Mouse, Rat
Description	Boster Bio Anti-SNX9 mouse monoclonal antibody, clone OTI1E2 (formerly 1E2). Catalog# M03796. Tested in FC, IF, IHC, WB. This antibody reacts with Human, Monkey, Mouse, Rat, Dog.
Application	Flow Cytometry, IF, IHC, WB
Clonality	Monoclonal OTI1E2
Formulation	PBS (pH 7.3) containing 1% stabilizing protein, 50% glycerol and 0.02% sodium azide. This antibody is supplied in a stabilized formulation. Compatibility with conjugation reactions depends on the chemistry of the conjugation method used. For conjugation methods that are not compatible with the stabilizing components present in this formulation, a carrier-free antibody format is required.
Storage Instructions	Store at -20°C as received.
Host	Mouse
Uniprot ID	Q9Y5X1

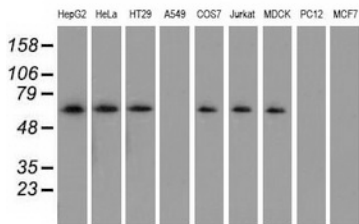
### Technical Details

Immunogen	Full length human recombinant protein of human SNX9 (NP_057308) produced in HEK293T cell.
Isotype	IgG2b
Concentration	1 mg/ml
Purification	Purified from mouse ascites fluids or tissue culture supernatant by affinity chromatography (protein A/G)
Suggested Dilutions	WB 1:1000~2000 IHC 1:50 IF 1:100 Flow Cytometry 1:100

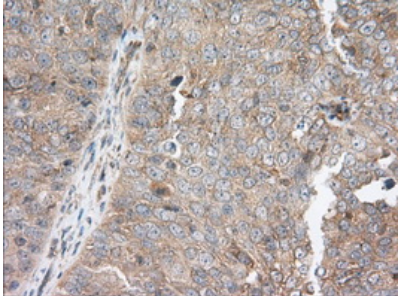
## Anti-SH3PX1 (SNX9) Mouse Monoclonal Antibody [Clone ID: OTI1E2] (M03796) Images



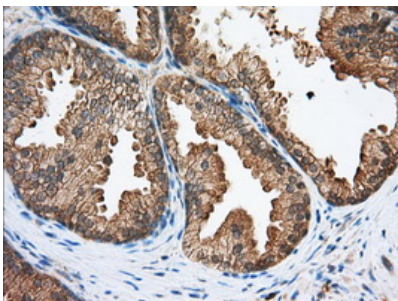
HEK293T cells were transfected with the pCMV6-ENTRY control (Left lane) or pCMV6-ENTRY SNX9 (Right lane) cDNA for 48 hrs and lysed. Equivalent amounts of cell lysates (5 ug per lane) were separated by SDS-PAGE and immunoblotted with anti-SNX9.



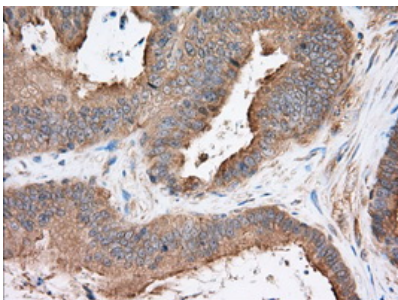
Western blot analysis of extracts (35ug) from 9 different cell lines by using anti-SNX9 monoclonal antibody.



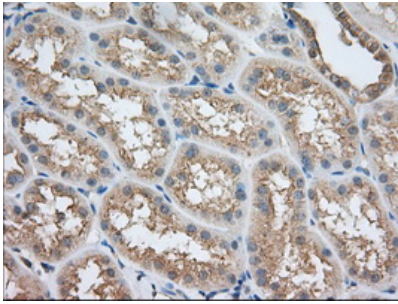
Immunohistochemical staining of paraffin-embedded Adenocarcinoma of Human ovary tissue using anti-SNX9 mouse monoclonal antibody. (Heat-induced epitope retrieval by 10mM citric buffer)



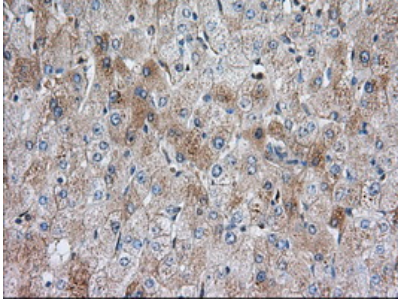
Immunohistochemical staining of paraffin-embedded Human prostate tissue within the normal limits using anti-SNX9 mouse monoclonal antibody. (Heat-induced epitope retrieval by 10mM citric buffer)



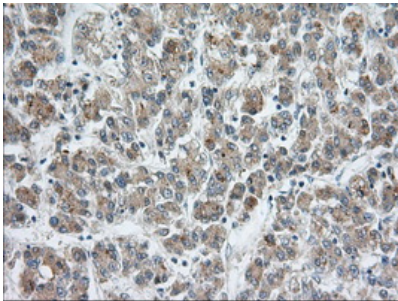
Immunohistochemical staining of paraffin-embedded Adenocarcinoma of Human colon tissue using anti-SNX9 mouse monoclonal antibody. (Heat-induced epitope retrieval by 10mM citric buffer)



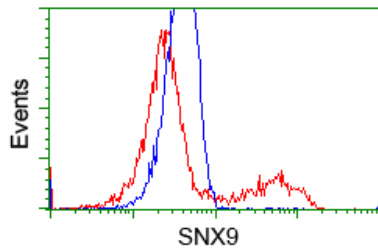
Immunohistochemical staining of paraffin-embedded Human Kidney tissue within the normal limits using anti-SNX9 mouse monoclonal antibody. (Heat-induced epitope retrieval by 10mM citric buffer)



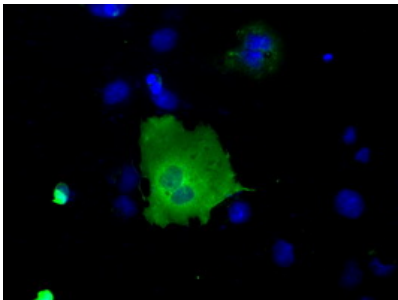
Immunohistochemical staining of paraffin-embedded Human liver tissue within the normal limits using anti-SNX9 mouse monoclonal antibody. (Heat-induced epitope retrieval by 10mM citric buffer)



Immunohistochemical staining of paraffin-embedded Carcinoma of Human liver tissue using anti-SNX9 mouse monoclonal antibody. (Heat-induced epitope retrieval by 10mM citric buffer)

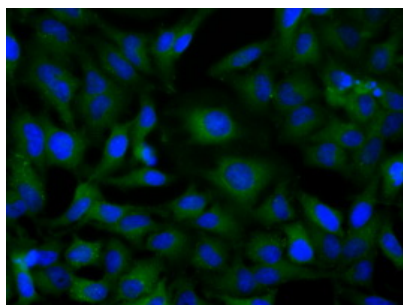


HEK293T cells transfected with either SNX9 (Myc-DDK-tagged) overexpress plasmid (Red) or empty vector control plasmid (Blue) were immunostained by anti-SNX9 antibody (M03796)



Anti-SNX9 mouse monoclonal antibody (M03796) immunofluorescent staining of COS7 cells transiently transfected by pCMV6-ENTRY SNX9.

Immunofluorescent staining of HeLa cells using anti-SNX9 mouse monoclonal antibody (M03796).



## Submit a product review to Biocompare.com

Submit a review of this product to Biocompare.com to receive a \$20 Amazon.com giftcard! Your reviews help your fellow scientists make the right decisions. Thank you for your contribution.



Anti-SH3PX1 (SNX9) Mouse Monoclonal Antibody [Clone ID: OT11E2]

For Research Use Only. Not for use in diagnostic procedures.