

## Anti-LNK (SH2B3) Mouse Monoclonal Antibody [Clone ID: OTI2D8]

Catalog Number: M03806

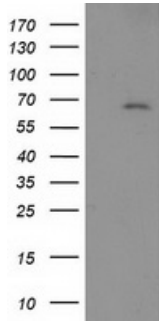
### Overview

Product Name	Anti-LNK (SH2B3) Mouse Monoclonal Antibody [Clone ID: OTI2D8]
Reactive Species	Human
Description	Boster Bio SH2B3 (LNK) mouse monoclonal antibody, clone OTI2D8 (formerly 2D8). Catalog# M03806. Tested in FC, IF, IHC, WB. This antibody reacts with Human.
Application	Flow Cytometry, IF, IHC, WB
Clonality	Monoclonal OTI2D8
Formulation	PBS (pH 7.3) containing 1% stabilizing protein, 50% glycerol and 0.02% sodium azide. This antibody is supplied in a stabilized formulation. Compatibility with conjugation reactions depends on the chemistry of the conjugation method used. For conjugation methods that are not compatible with the stabilizing components present in this formulation, a carrier-free antibody format is required.
Storage Instructions	Store at -20°C as received.
Host	Mouse
Uniprot ID	Q9UQQ2

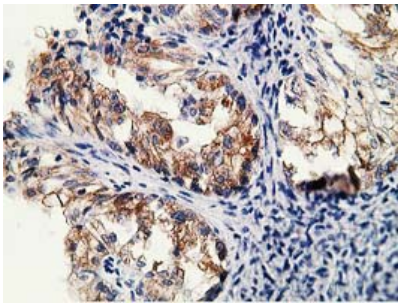
### Technical Details

Immunogen	Full length human recombinant protein of human SH2B3 (NP_005466) produced in HEK293T cell.
Isotype	IgG1
Concentration	0.37 mg/ml
Purification	Purified from mouse ascites fluids or tissue culture supernatant by affinity chromatography (protein A/G)
Suggested Dilutions	WB 1:2000 IHC 1:150 IF 1:100 Flow Cytometry 1:100

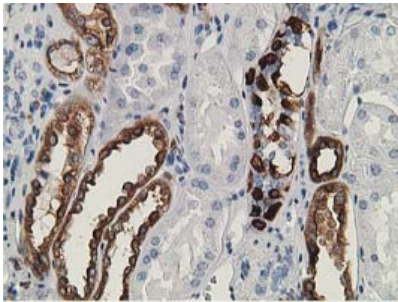
## Anti-LNK (SH2B3) Mouse Monoclonal Antibody [Clone ID: OTI2D8] (M03806) Images



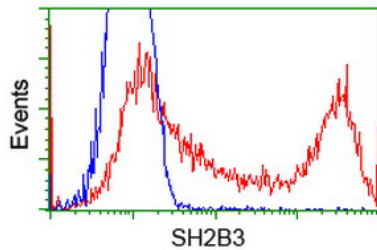
HEK293T cells were transfected with the pCMV6-ENTRY control (Left lane) or pCMV6-ENTRY SH2B3 (Right lane) cDNA for 48 hrs and lysed. Equivalent amounts of cell lysates (5 ug per lane) were separated by SDS-PAGE and immunoblotted with anti-SH2B3.



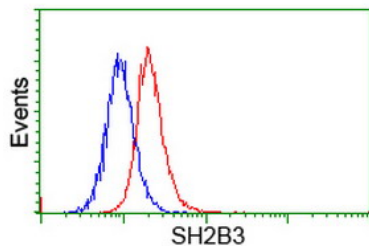
Immunohistochemical staining of paraffin-embedded Human pancreas tissue within the normal limits using anti-SH2B3 mouse monoclonal antibody. (Heat-induced epitope retrieval by 10mM citric buffer)



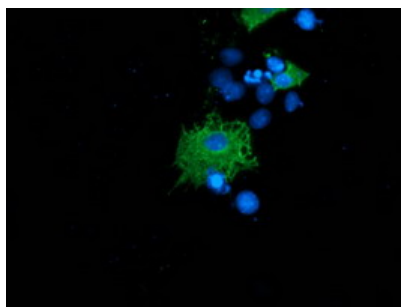
Immunohistochemical staining of paraffin-embedded Human kidney tissue within the normal limits using anti-SH2B3 mouse monoclonal antibody. (Heat-induced epitope retrieval by 10mM citric buffer)



HEK293T cells transfected with either SH2B3 (Myc-DDK-tagged) overexpress plasmid (Red) or empty vector control plasmid (Blue) were immunostained by anti-SH2B3 antibody (M03806)



Flow cytometric Analysis of HeLa cells



Anti-SH2B3 mouse monoclonal antibody (M03806)  
immunofluorescent staining of COS7 cells transiently  
transfected by pCMV6-ENTRY SH2B3.

### Submit a product review to [Biocompare.com](https://www.biocompare.com)

Submit a review of this product to [Biocompare.com](https://www.biocompare.com) to receive a \$20 Amazon.com giftcard! Your reviews help your fellow scientists make the right decisions. Thank you for your contribution.



Anti-LNK (SH2B3) Mouse Monoclonal Antibody [Clone ID: OT12D8]

For Research Use Only. Not for use in diagnostic procedures.