

Anti-Retinol Binding Protein-1 (RBP1) RBP4 Monoclonal Antibody

Catalog Number: M03820

About RBP

This monoclonal antibody recognizes an epitope within the 74-182 C-terminal sequence (11kD peptide fragment) of human serum Cellular Retinol Binding Protein 1 (CRBP 1), a single-chain glycoprotein belonging to the superfamily of hydrophobic molecule transporter proteins, which is responsible for transport of retinol (vitamin A1) from the liver to peripheral target tissues, like the eye, where it mediates the cellular uptake. CRBP 1 is synthesized by hepatic parenchymal cells where it becomes bound to its ligand retinol and is then released into the circulation, where it binds further to the protein transthyretin, to form a transporting complex, which is big enough not to be lost by filtration through the kidney glomeruli. It is detected in nearly all tissues with higher expression in adult ovary, pancreas, pituitary gland, adrenal gland, and fetal liver.

Overview

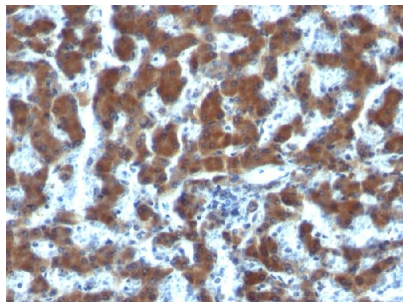
Product Name	Anti-Retinol Binding Protein-1 (RBP1) RBP4 Monoclonal Antibody
Reactive Species	Goat, Human, Monkey, Mouse, Rabbit, Rat, Chimpanzee
Description	Boster Bio Anti-Retinol Binding Protein-1 (RBP1) RBP4 Monoclonal Antibody (Catalog # M03820). Tested in IHC applications. This antibody reacts with Human, Chimpanzee, Monkey, Goat, Rabbit, Rat, Mouse.
Conjugate	Biotin
Application	IHC
Clonality	Monoclonal Clone: G4E4
Formulation	Prepared in 10mM PBS with 0.05% BSA & 0.05% azide. Also available WITHOUT BSA & azide at 1.0mg/ml.
Storage Instructions	Antibody with azide - store at 2 to 8°C. Antibody without azide - store at -20 to -80°C. Antibody is stable for 24 months. Non-hazardous. No MSDS required.
Host	Mouse
Uniprot ID	P02753; P09455; P50120

Technical Details

Immunogen	Retinol binding protein-1 Purified from human plasma
Predicted Reactive Species	Pig, Rabbit
Cross Reactivity	Does not cross-react with primate, avian or amphibian GR.
Isotype	IgG1, kappa
Form	Liquid

Concentration	Purified antibody with BSA and azide at 200ug/ml
Purification	200ug/ml of antibody purified from Bioreactor Concentrate by Protein A/G.
Suggested Dilutions	<p>Dilute the sample so that the expected range of concentrations fall within the detection range of this kit.</p> <p>If the expected range of concentration is unknown, a pilot test should be conducted to decide the optimal dilution ratio for your samples.</p> <p>Some PubMed article(s) citing the expression level of this target are as follows:</p> <p>Boster Bio's internal QC testing used:</p> <p>Immunohistochemistry (Formalin-fixed) (0.1-0.2ug/ml for 30 min at RT)(Staining of formalin-fixed tissues requires heating tissue sections in 10mM Tris with 1mM EDTA, pH 9.0, for 45 min at 95&degC followed by cooling at RT for 20 minutes)</p> <p>Optimal dilution for a specific application should be determined.</p>

Anti-Retinol Binding Protein-1 (RBP1) RBP4 Monoclonal Antibody (M03820) Images



Formalin-fixed, paraffin-embedded human Hepatocellular Carcinoma stained with Anti-RBP1 Mouse Monoclonal Antibody (G4E4).

Submit a product review to Biocompare.com

Submit a review of this product to Biocompare.com to receive a \$20 Amazon.com giftcard! Your reviews help your fellow scientists make the right decisions. Thank you for your contribution.



Anti-Retinol Binding Protein-1 (RBP1) RBP4 Monoclonal Antibody