

## Anti-RBP1 Mouse Monoclonal Antibody [Clone ID: OTI2H3]

Catalog Number: M03820-1

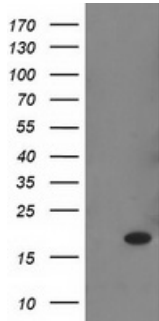
### Overview

Product Name	Anti-RBP1 Mouse Monoclonal Antibody [Clone ID: OTI2H3]
Reactive Species	Human, Mouse, Rat
Description	Boster Bio RBP1 mouse monoclonal antibody, clone OTI2H3 (formerly 2H3). Catalog# M03820-1. Tested in FC, IF, IHC, WB. This antibody reacts with Human, Mouse, Rat.
Application	Flow Cytometry, IF, IHC, WB
Clonality	Monoclonal OTI2H3
Formulation	PBS (pH 7.3) containing 1% stabilizing protein, 50% glycerol and 0.02% sodium azide. This antibody is supplied in a stabilized formulation. Compatibility with conjugation reactions depends on the chemistry of the conjugation method used. For conjugation methods that are not compatible with the stabilizing components present in this formulation, a carrier-free antibody format is required.
Storage Instructions	Store at -20°C as received.
Host	Mouse
Uniprot ID	P09455

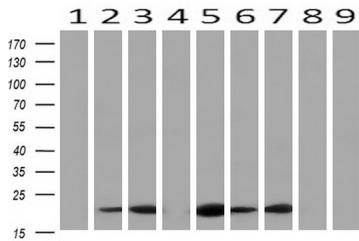
### Technical Details

Immunogen	Full length human recombinant protein of human RBP1 (NP_002890) produced in HEK293T cell.
Isotype	IgG2a
Concentration	1.2 mg/ml
Purification	Purified from mouse ascites fluids or tissue culture supernatant by affinity chromatography (protein A/G)
Suggested Dilutions	WB 1:2000 IHC 1:150 IF 1:100 Flow Cytometry 1:100

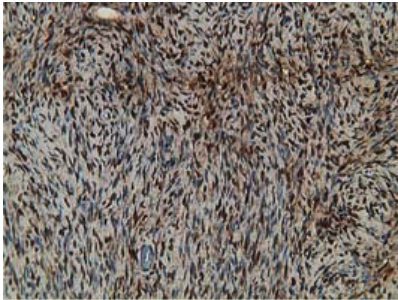
## Anti-RBP1 Mouse Monoclonal Antibody [Clone ID: OTI2H3] (M03820-1) Images



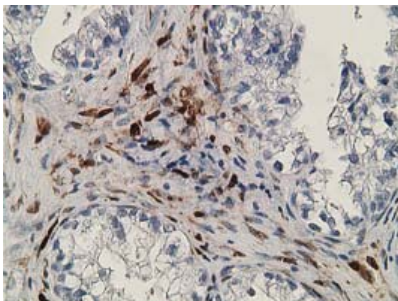
HEK293T cells were transfected with the pCMV6-ENTRY control (Left lane) or pCMV6-ENTRY RBP1 (Right lane) cDNA for 48 hrs and lysed. Equivalent amounts of cell lysates (5 ug per lane) were separated by SDS-PAGE and immunoblotted with anti-RBP1.



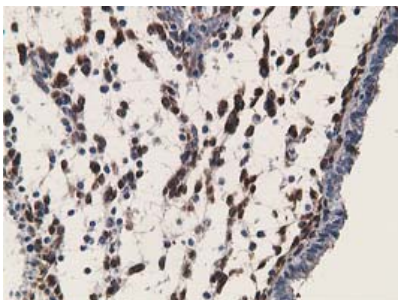
Western blot analysis of extracts (10ug) from 9 Human tissue by using anti-RBP1 monoclonal antibody at 1:200 (1: Testis; 2: Omentum; 3: Uterus; 4: Breast; 5: Brain; 6: Liver; 7: Ovary; 8: Thyroid gland; 9: colon).



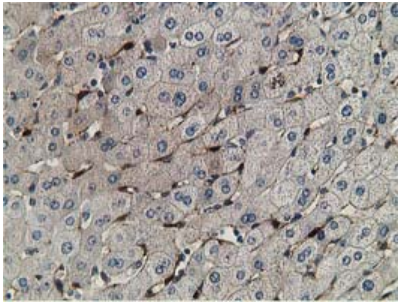
Immunohistochemical staining of paraffin-embedded Human Ovary tissue within the normal limits using anti-RBP1 mouse monoclonal antibody. (Heat-induced epitope retrieval by 10mM citric buffer)



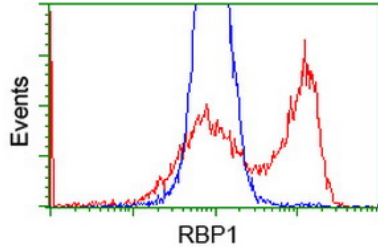
Immunohistochemical staining of paraffin-embedded Adenocarcinoma of Human ovary tissue using anti-RBP1 mouse monoclonal antibody. (Heat-induced epitope retrieval by 10mM citric buffer)



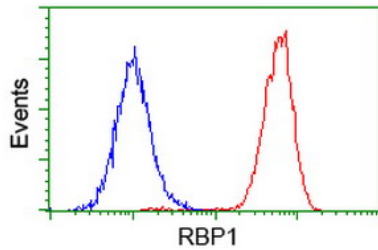
Immunohistochemical staining of paraffin-embedded Human endometrium tissue within the normal limits using anti-RBP1 mouse monoclonal antibody. (Heat-induced epitope retrieval by 10mM citric buffer)



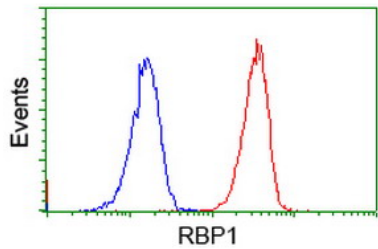
Immunohistochemical staining of paraffin-embedded Human liver tissue within the normal limits using anti-RBP1 mouse monoclonal antibody. (Heat-induced epitope retrieval by 10mM citric buffer)



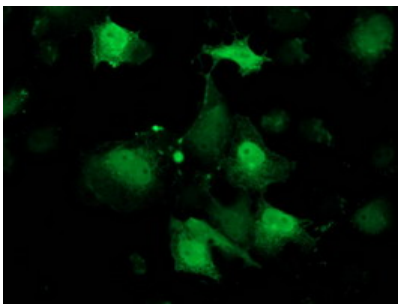
HEK293T cells transfected with either RBP1 (Myc-DDK-tagged) overexpress plasmid (Red) or empty vector control plasmid (Blue) were immunostained by anti-RBP1 antibody (M03820-1)



Flow cytometric Analysis of HeLa cells

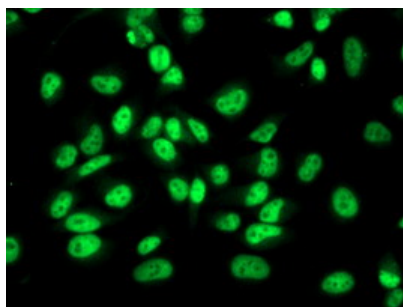


Flow cytometric Analysis of Jurkat cells



Anti-RBP1 mouse monoclonal antibody (M03820-1) immunofluorescent staining of COS7 cells transiently transfected by pCMV6-ENTRY RBP1.

Immunofluorescent staining of HeLa cells using anti-RBP1 mouse monoclonal antibody (M03820-1).



## Submit a product review to Biocompare.com

Submit a review of this product to Biocompare.com to receive a \$20 Amazon.com giftcard! Your reviews help your fellow scientists make the right decisions. Thank you for your contribution.



Anti-RBP1 Mouse Monoclonal Antibody [Clone ID: OTI2H3]

For Research Use Only. Not for use in diagnostic procedures.