

Anti-DDX6 Mouse Monoclonal Antibody [Clone ID: OTI2D6]

Catalog Number: M03826

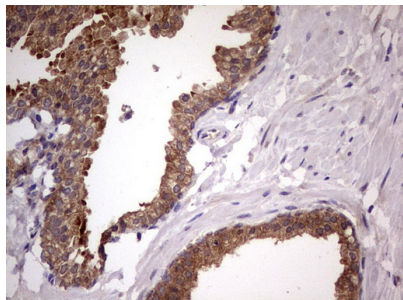
Overview

Product Name	Anti-DDX6 Mouse Monoclonal Antibody [Clone ID: OTI2D6]
Reactive Species	Human, Mouse, Rat
Description	Boster Bio DDX6 mouse monoclonal antibody, clone OTI2D6 (formerly 2D6). Catalog# M03826. Tested in IHC, WB. This antibody reacts with Human, Mouse, Rat.
Conjugate	Unconjugated
Application	IHC, WB
Clonality	Monoclonal OTI2D6
Formulation	PBS (pH 7.3) containing 1% stabilizing protein, 50% glycerol and 0.02% sodium azide. This antibody is supplied in a stabilized formulation. Compatibility with conjugation reactions depends on the chemistry of the conjugation method used. For conjugation methods that are not compatible with the stabilizing components present in this formulation, a carrier-free antibody format is required.
Storage Instructions	Store at -20°C for one year. For short term storage and frequent use, store at 4°C for up to one month. Avoid repeated freeze-thaw cycles.
Host	Mouse
Uniprot ID	P26196

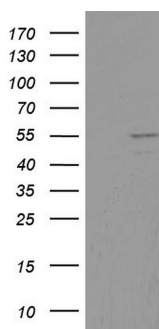
Technical Details

Immunogen	Human recombinant protein fragment corresponding to amino acids 1-298 of human DDX6 (NP_004388) produced in E.coli.
Isotype	IgG2a
Concentration	1 mg/ml
Purification	Purified from mouse ascites fluids or tissue culture supernatant by affinity chromatography (protein A/G)
Suggested Dilutions	WB 1:500 IHC 1:150

Anti-DDX6 Mouse Monoclonal Antibody [Clone ID: OTI2D6] (M03826) Images



Immunohistochemical staining of paraffin-embedded Carcinoma of Human prostate tissue using anti-DDX6 mouse monoclonal antibody. (Heat-induced epitope retrieval by 1 mM EDTA in 10mM Tris)



HEK293T cells were transfected with the pCMV6-ENTRY control (Left lane) or pCMV6-ENTRY DDX6 (Right lane) cDNA for 48 hrs and lysed. Equivalent amounts of cell lysates (5 ug per lane) were separated by SDS-PAGE and immunoblotted with anti-DDX6.

Submit a product review to Biocompare.com

Submit a review of this product to Biocompare.com to receive a \$20 Amazon.com giftcard! Your reviews help your fellow scientists make the right decisions. Thank you for your contribution.



Anti-DDX6 Mouse Monoclonal Antibody [Clone ID: OTI2D6]

For Research Use Only. Not for use in diagnostic procedures.