

## Anti-DOCK2 Mouse Monoclonal Antibody [Clone ID: OTI7G2]

Catalog Number: M03836

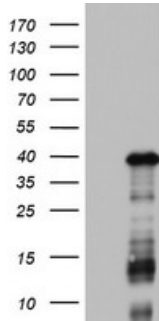
### Overview

Product Name	Anti-DOCK2 Mouse Monoclonal Antibody [Clone ID: OTI7G2]
Reactive Species	Human, Mouse, Rat
Description	Boster Bio DOCK2 mouse monoclonal antibody, clone OTI7G2 (formerly 7G2). Catalog# M03836. Tested in IHC, WB. This antibody reacts with Human, Mouse, Rat.
Application	IHC, WB
Clonality	Monoclonal OTI7G2
Formulation	PBS (pH 7.3) containing 1% stabilizing protein, 50% glycerol and 0.02% sodium azide. This antibody is supplied in a stabilized formulation. Compatibility with conjugation reactions depends on the chemistry of the conjugation method used. For conjugation methods that are not compatible with the stabilizing components present in this formulation, a carrier-free antibody format is required.
Storage Instructions	Store at -20°C as received.
Host	Mouse
Uniprot ID	Q92608

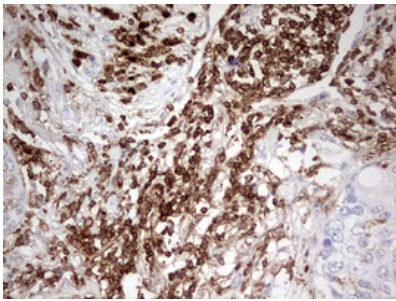
### Technical Details

Immunogen	Human recombinant protein fragment corresponding to amino acids 1544-1830 of human DOCK2 (NP_004937) produced in E.coli.
Isotype	IgG2a
Concentration	1 mg/ml
Purification	Purified from mouse ascites fluids or tissue culture supernatant by affinity chromatography (protein A/G)
Suggested Dilutions	WB 1:2000 IHC 1:150

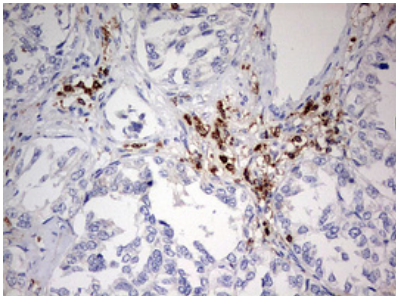
## Anti-DOCK2 Mouse Monoclonal Antibody [Clone ID: OTI7G2] (M03836) Images



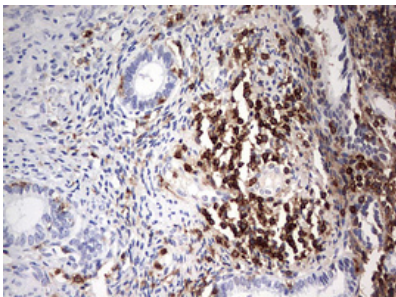
HEK293T cells were transfected with the pCMV6-ENTRY control (Left lane) or pCMV6-ENTRY DOCK2 (Right lane) cDNA for 48 hrs and lysed. Equivalent amounts of cell lysates (5 ug per lane) were separated by SDS-PAGE and immunoblotted with anti-DOCK2.



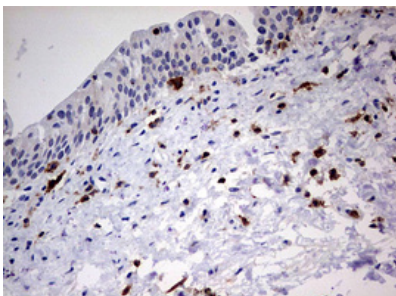
Immunohistochemical staining of paraffin-embedded Carcinoma of Human lung tissue using anti-DOCK2 mouse monoclonal antibody. (Heat-induced epitope retrieval by 10mM citric buffer)



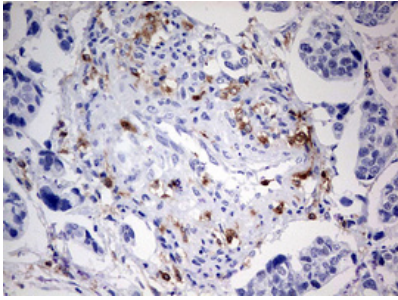
Immunohistochemical staining of paraffin-embedded Carcinoma of Human pancreas tissue using anti-DOCK2 mouse monoclonal antibody. (Heat-induced epitope retrieval by 10mM citric buffer)



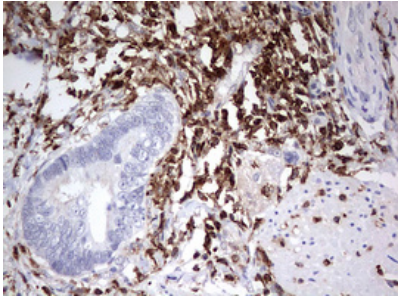
Immunohistochemical staining of paraffin-embedded Human endometrium tissue within the normal limits using anti-DOCK2 mouse monoclonal antibody. (Heat-induced epitope retrieval by 10mM citric buffer)



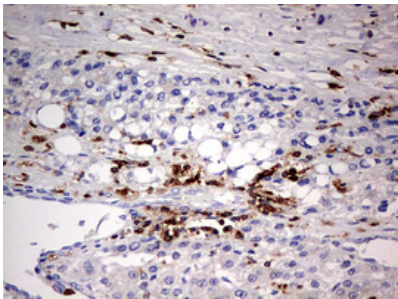
Immunohistochemical staining of paraffin-embedded Human bladder tissue within the normal limits using anti-DOCK2 mouse monoclonal antibody. (Heat-induced epitope retrieval by 10mM citric buffer)



Immunohistochemical staining of paraffin-embedded Carcinoma of Human bladder tissue using anti-DOCK2 mouse monoclonal antibody. (Heat-induced epitope retrieval by 10mM citric buffer)



Immunohistochemical staining of paraffin-embedded Adenocarcinoma of Human colon tissue using anti-DOCK2 mouse monoclonal antibody. (Heat-induced epitope retrieval by 10mM citric buffer)



Immunohistochemical staining of paraffin-embedded Carcinoma of Human liver tissue using anti-DOCK2 mouse monoclonal antibody. (Heat-induced epitope retrieval by 10mM citric buffer)

## Submit a product review to [Biocompare.com](https://www.biocompare.com)

Submit a review of this product to [Biocompare.com](https://www.biocompare.com) to receive a \$20 Amazon.com giftcard! Your reviews help your fellow scientists make the right decisions. Thank you for your contribution.



Anti-DOCK2 Mouse Monoclonal Antibody [Clone ID: OTI7G2]

For Research Use Only. Not for use in diagnostic procedures.