

Anti-FAF1 Mouse Monoclonal Antibody [Clone ID: OTI10D1]

Catalog Number: M03842

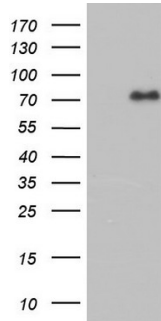
Overview

Product Name	Anti-FAF1 Mouse Monoclonal Antibody [Clone ID: OTI10D1]
Reactive Species	Human, Mouse, Rat
Description	Boster Bio FAF1 mouse monoclonal antibody, clone OTI10D1 (formerly 10D1). Catalog# M03842. Tested in IHC, WB. This antibody reacts with Human, Mouse, Rat.
Application	IHC, WB
Clonality	Monoclonal OTI10D1
Formulation	PBS (pH 7.3) containing 1% stabilizing protein, 50% glycerol and 0.02% sodium azide. This antibody is supplied in a stabilized formulation. Compatibility with conjugation reactions depends on the chemistry of the conjugation method used. For conjugation methods that are not compatible with the stabilizing components present in this formulation, a carrier-free antibody format is required.
Storage Instructions	Store at -20°C as received.
Host	Mouse
Uniprot ID	Q9UNN5

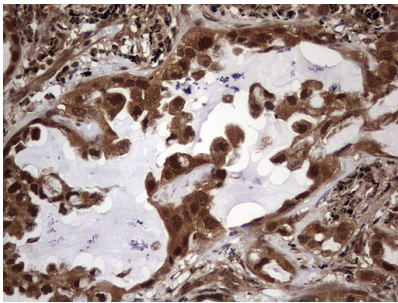
Technical Details

Immunogen	Human recombinant protein fragment corresponding to amino acids 415-650 of human FAF1 (NP_008982) produced in E.coli.
Isotype	IgG1
Concentration	1 mg/ml
Purification	Purified from mouse ascites fluids or tissue culture supernatant by affinity chromatography (protein A/G)
Suggested Dilutions	WB 1:2000

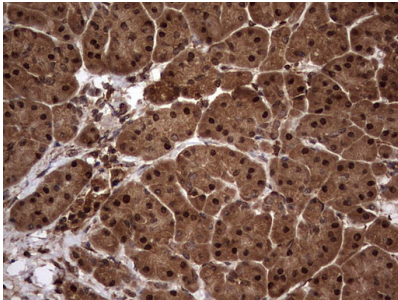
Anti-FAF1 Mouse Monoclonal Antibody [Clone ID: OTI10D1] (M03842) Images



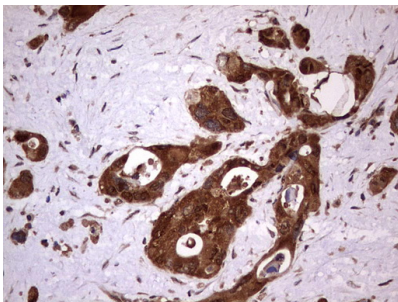
HEK293T cells were transfected with the pCMV6-ENTRY control (Left lane) or pCMV6-ENTRY FAF1 (Right lane) cDNA for 48 hrs and lysed. Equivalent amounts of cell lysates (5 ug per lane) were separated by SDS-PAGE and immunoblotted with anti-FAF1.



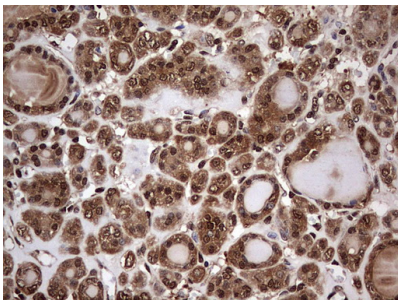
Immunohistochemical staining of paraffin-embedded Carcinoma of Human lung tissue using anti-FAF1 mouse monoclonal antibody. (M03842) Dilution: 1:150



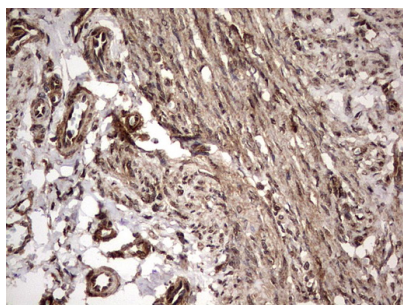
Immunohistochemical staining of paraffin-embedded Human pancreas tissue within the normal limits using anti-FAF1 mouse monoclonal antibody. (M03842) Dilution: 1:150



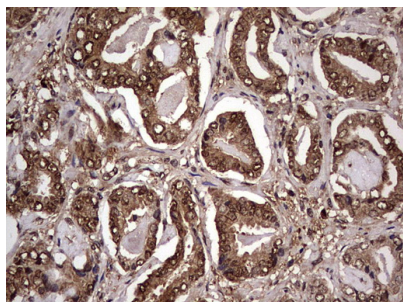
Immunohistochemical staining of paraffin-embedded Carcinoma of Human pancreas tissue using anti-FAF1 mouse monoclonal antibody. (M03842) Dilution: 1:150



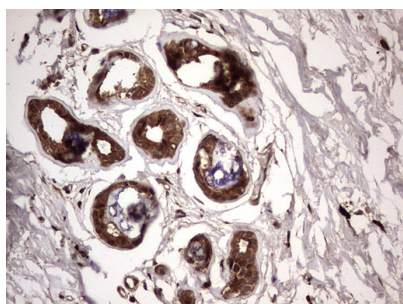
Immunohistochemical staining of paraffin-embedded Carcinoma of Human thyroid tissue using anti-FAF1 mouse monoclonal antibody. (M03842) Dilution: 1:150



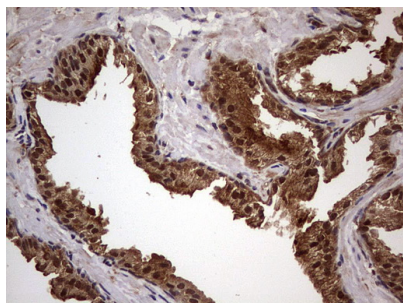
Immunohistochemical staining of paraffin-embedded Adenocarcinoma of Human endometrium tissue using anti-FAF1 mouse monoclonal antibody. (M03842) Dilution: 1:150



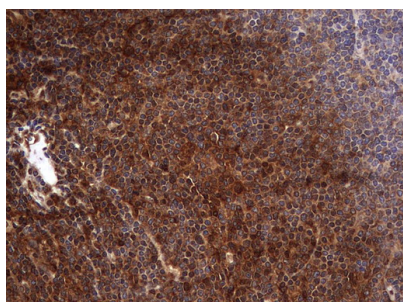
Immunohistochemical staining of paraffin-embedded Human prostate tissue within the normal limits using anti-FAF1 mouse monoclonal antibody. (M03842) Dilution: 1:150



Immunohistochemical staining of paraffin-embedded Human breast tissue within the normal limits using anti-FAF1 mouse monoclonal antibody. (M03842) Dilution: 1:150

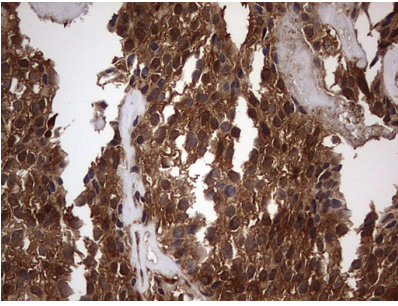


Immunohistochemical staining of paraffin-embedded Carcinoma of Human prostate tissue using anti-FAF1 mouse monoclonal antibody. (M03842) Dilution: 1:150

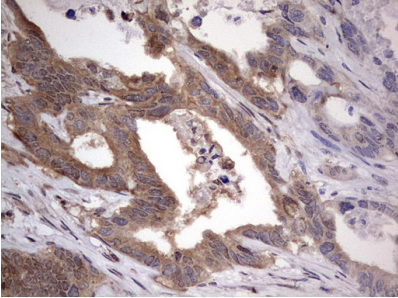


Immunohistochemical staining of paraffin-embedded Human lymphoma tissue using anti-FAF1 mouse monoclonal antibody. (M03842) Dilution: 1:150

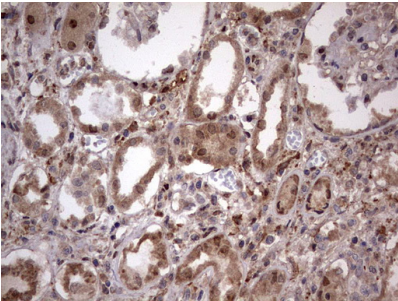
Immunohistochemical staining of paraffin-embedded Adenocarcinoma of Human breast tissue using anti-FAF1



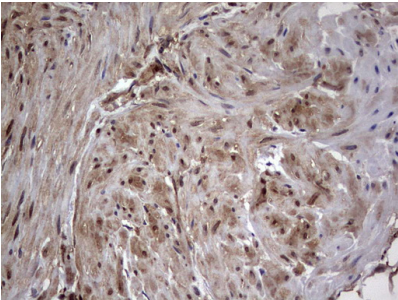
mouse monoclonal antibody. (M03842) Dilution: 1:150



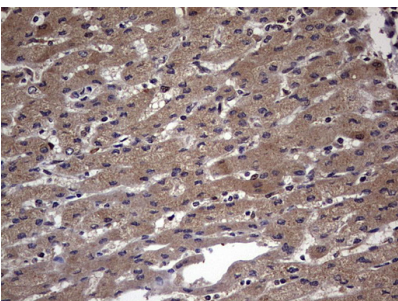
Immunohistochemical staining of paraffin-embedded Adenocarcinoma of Human colon tissue using anti-FAF1 mouse monoclonal antibody. (M03842) Dilution: 1:150



Immunohistochemical staining of paraffin-embedded Human Kidney tissue within the normal limits using anti-FAF1 mouse monoclonal antibody. (M03842) Dilution: 1:150

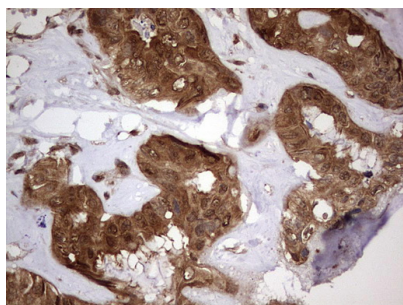


Immunohistochemical staining of paraffin-embedded Carcinoma of Human kidney tissue using anti-FAF1 mouse monoclonal antibody. (M03842) Dilution: 1:150



Immunohistochemical staining of paraffin-embedded Human liver tissue within the normal limits using anti-FAF1 mouse monoclonal antibody. (M03842) Dilution: 1:150

Immunohistochemical staining of paraffin-embedded Carcinoma of Human liver tissue using anti-FAF1 mouse monoclonal antibody. (M03842) Dilution: 1:150



Submit a product review to Biocompare.com

Submit a review of this product to Biocompare.com to receive a \$20 Amazon.com giftcard! Your reviews help your fellow scientists make the right decisions. Thank you for your contribution.



Anti-FAF1 Mouse Monoclonal Antibody [Clone ID: OTI10D1]

For Research Use Only. Not for use in diagnostic procedures.