

Anti-ERAB (HSD17B10) Mouse Monoclonal Antibody [Clone ID: OTI10B4]

Catalog Number: M03844-2

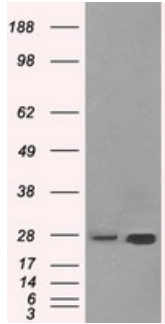
Overview

Product Name	Anti-ERAB (HSD17B10) Mouse Monoclonal Antibody [Clone ID: OTI10B4]
Reactive Species	Human, Mouse, Rat
Description	Boster Bio Anti-HSD17B10 mouse monoclonal antibody, clone OTI10B4 (formerly 10B4). Catalog# M03844-2. Tested in FC, IF, IHC, WB. This antibody reacts with Human, Mouse, Rat.
Application	Flow Cytometry, IF, IHC, WB
Clonality	Monoclonal OTI10B4
Formulation	PBS (pH 7.3) containing 1% BSA, 50% glycerol and 0.02% sodium azide.
Storage Instructions	Store at -20°C as received.
Host	Mouse
Uniprot ID	Q99714

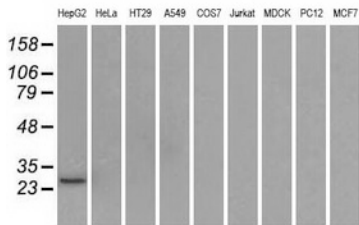
Technical Details

Immunogen	Full length human recombinant protein of human HSD17B10 (NP_004484) produced in HEK293T cell.
Isotype	IgG1
Concentration	1 mg/ml
Purification	Purified from mouse ascites fluids or tissue culture supernatant by affinity chromatography (protein A/G)
Suggested Dilutions	Dilute the sample so that the expected range of concentrations fall within the detection range of this kit. If the expected range of concentration is unknown, a pilot test should be conducted to decide the optimal dilution ratio for your samples. Some PubMed article(s) citing the expression level of this target are as follows:

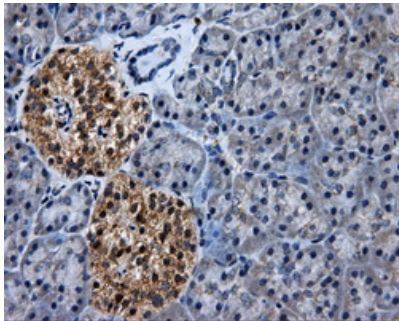
Anti-ERAB (HSD17B10) Mouse Monoclonal Antibody [Clone ID: OTI10B4] (M03844-2) Images



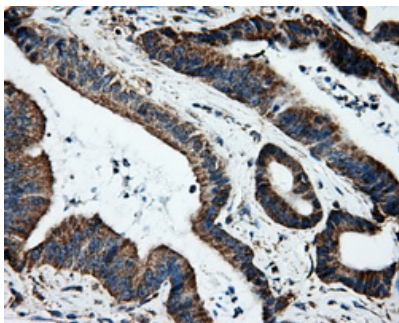
HEK293T cells were transfected with the pCMV6-ENTRY control (Left lane) or pCMV6-ENTRY HSD17B10 (Right lane) cDNA for 48 hrs and lysed. Equivalent amounts of cell lysates (5 ug per lane) were separated by SDS-PAGE and immunoblotted with anti-HSD17B10.



Western blot analysis of extracts (35ug) from 9 different cell lines by using anti-HSD17B10 monoclonal antibody.

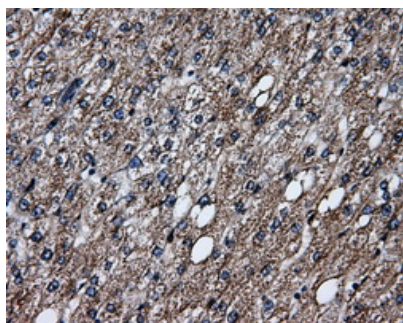
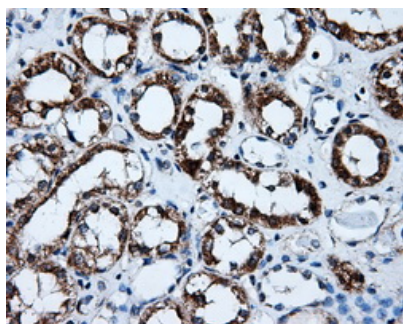


Immunohistochemical staining of paraffin-embedded pancreas tissue within the normal limits using anti-HSD17B10 mouse monoclonal antibody. (Heat-induced epitope retrieval by 10mM citric buffer)

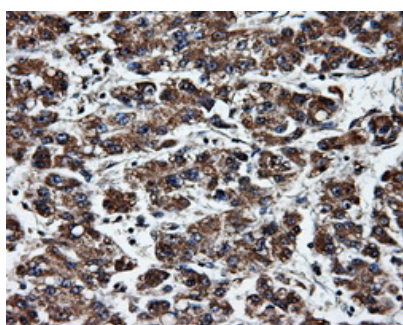


Immunohistochemical staining of paraffin-embedded Adenocarcinoma of colon tissue using anti-HSD17B10 mouse monoclonal antibody. (Heat-induced epitope retrieval by 10mM citric buffer)

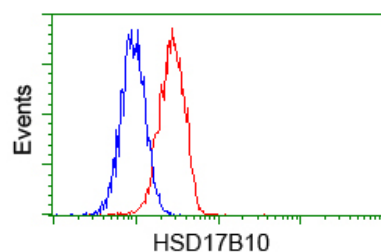
Immunohistochemical staining of paraffin-embedded Kidney tissue within the normal limits using anti-HSD17B10 mouse monoclonal antibody. (Heat-induced epitope retrieval by 10mM citric buffer)



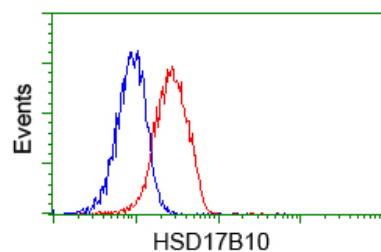
Immunohistochemical staining of paraffin-embedded liver tissue within the normal limits using anti-HSD17B10 mouse monoclonal antibody. (Heat-induced epitope retrieval by 10mM citric buffer)



Immunohistochemical staining of paraffin-embedded Carcinoma of liver tissue using anti-HSD17B10 mouse monoclonal antibody. (Heat-induced epitope retrieval by 10mM citric buffer)

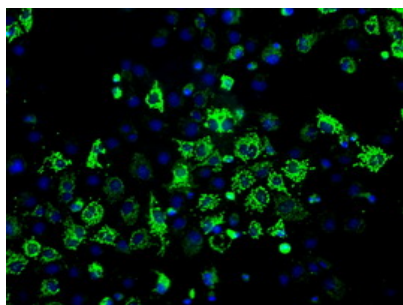


Flow cytometric analysis of Hela cells



Flow cytometric analysis of Jurkat cells

Anti-HSD17B10 mouse monoclonal antibody (M03844-2) immunofluorescent staining of COS7 cells transiently transfected by pCMV6-ENTRY HSD17B10.



Submit a product review to Biocompare.com

Submit a review of this product to Biocompare.com to receive a \$20 Amazon.com giftcard! Your reviews help your fellow scientists make the right decisions. Thank you for your contribution.



Anti-ERAB (HSD17B10) Mouse Monoclonal Antibody [Clone ID: OTI10B4]