

## Anti-TMEFF2 Mouse Monoclonal Antibody [Clone ID: OTI1F9]

Catalog Number: M03846

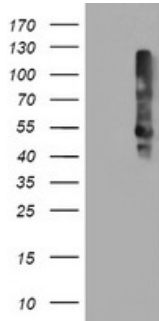
### Overview

Product Name	Anti-TMEFF2 Mouse Monoclonal Antibody [Clone ID: OTI1F9]
Reactive Species	Human, Mouse
Description	Boster Bio TMEFF2 mouse monoclonal antibody, clone OTI1F9 (formerly 1F9). Catalog# M03846. Tested in IHC, WB. This antibody reacts with Human, Mouse.
Application	IHC, WB
Clonality	Monoclonal OTI1F9
Formulation	PBS (pH 7.3) containing 1% stabilizing protein, 50% glycerol and 0.02% sodium azide. This antibody is supplied in a stabilized formulation. Compatibility with conjugation reactions depends on the chemistry of the conjugation method used. For conjugation methods that are not compatible with the stabilizing components present in this formulation, a carrier-free antibody format is required.
Storage Instructions	Store at -20°C as received.
Host	Mouse
Uniprot ID	Q9UIK5

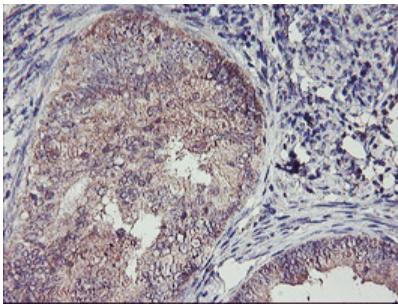
### Technical Details

Immunogen	Full length human recombinant protein of human TMEFF2 (NP_057276) produced in HEK293T cell.
Isotype	IgG2a
Concentration	1.12 mg/ml
Purification	Purified from mouse ascites fluids or tissue culture supernatant by affinity chromatography (protein A/G)
Suggested Dilutions	WB 1:500~2000 IHC 1:150

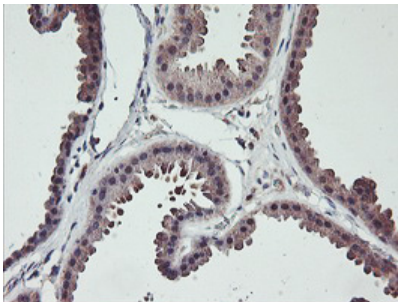
## Anti-TMEFF2 Mouse Monoclonal Antibody [Clone ID: OTI1F9] (M03846) Images



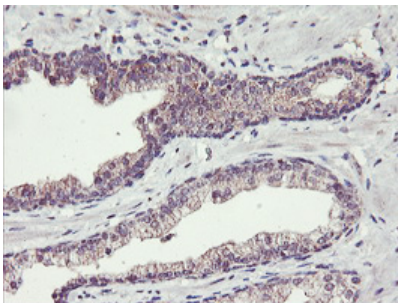
HEK293T cells were transfected with the pCMV6-ENTRY control (Left lane) or pCMV6-ENTRY TMEFF2 (Right lane) cDNA for 48 hrs and lysed. Equivalent amounts of cell lysates (5 ug per lane) were separated by SDS-PAGE and immunoblotted with anti-TMEFF2.



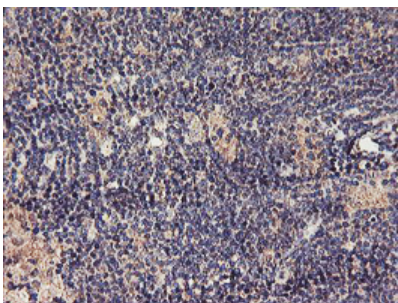
Immunohistochemical staining of paraffin-embedded Adenocarcinoma of Human endometrium tissue using anti-TMEFF2 mouse monoclonal antibody. (Heat-induced epitope retrieval by 10mM citric buffer)



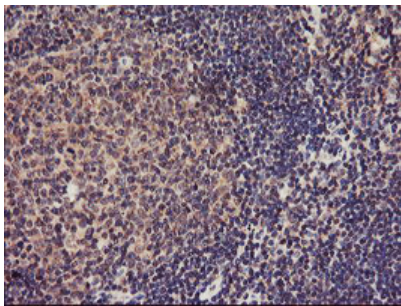
Immunohistochemical staining of paraffin-embedded Human breast tissue within the normal limits using anti-TMEFF2 mouse monoclonal antibody. (Heat-induced epitope retrieval by 10mM citric buffer)



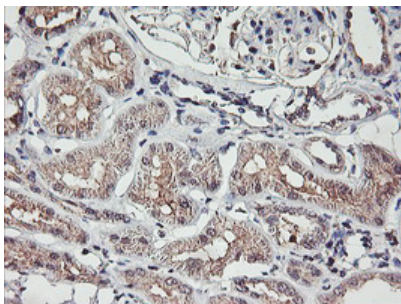
Immunohistochemical staining of paraffin-embedded Carcinoma of Human prostate tissue using anti-TMEFF2 mouse monoclonal antibody. (Heat-induced epitope retrieval by 10mM citric buffer)



Immunohistochemical staining of paraffin-embedded Human lymphoma tissue using anti-TMEFF2 mouse monoclonal antibody. (Heat-induced epitope retrieval by 10mM citric buffer)



Immunohistochemical staining of paraffin-embedded Human tonsil within the normal limits using anti-TMEFF2 mouse monoclonal antibody. (Heat-induced epitope retrieval by 10mM citric buffer)



Immunohistochemical staining of paraffin-embedded Human Kidney tissue within the normal limits using anti-TMEFF2 mouse monoclonal antibody. (Heat-induced epitope retrieval by 10mM citric buffer)

## Submit a product review to [Biocompare.com](https://www.biocompare.com)

Submit a review of this product to [Biocompare.com](https://www.biocompare.com) to receive a \$20 Amazon.com giftcard! Your reviews help your fellow scientists make the right decisions. Thank you for your contribution.



Anti-TMEFF2 Mouse Monoclonal Antibody [Clone ID: OT11F9]

For Research Use Only. Not for use in diagnostic procedures.