

## Anti-TMEFF2 Mouse Monoclonal Antibody [Clone ID: OTI1E1]

Catalog Number: M03846-1

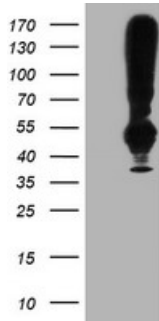
### Overview

Product Name	Anti-TMEFF2 Mouse Monoclonal Antibody [Clone ID: OTI1E1]
Reactive Species	Human, Mouse
Description	Boster Bio TMEFF2 mouse monoclonal antibody, clone OTI1E1 (formerly 1E1). Catalog# M03846-1. Tested in FC, IF, WB. This antibody reacts with Human, Mouse.
Application	Flow Cytometry, IF, WB
Clonality	Monoclonal OTI1E1
Formulation	PBS (pH 7.3) containing 1% stabilizing protein, 50% glycerol and 0.02% sodium azide. This antibody is supplied in a stabilized formulation. Compatibility with conjugation reactions depends on the chemistry of the conjugation method used. For conjugation methods that are not compatible with the stabilizing components present in this formulation, a carrier-free antibody format is required.
Storage Instructions	Store at -20°C as received.
Host	Mouse
Uniprot ID	Q9UIK5

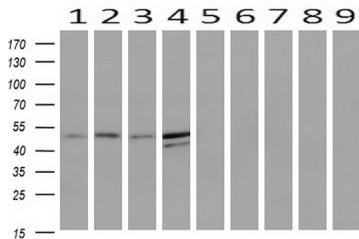
### Technical Details

Immunogen	Full length human recombinant protein of human TMEFF2 (NP_057276) produced in HEK293T cell.
Isotype	IgG2a
Concentration	1.25 mg/ml
Purification	Purified from mouse ascites fluids or tissue culture supernatant by affinity chromatography (protein A/G)
Suggested Dilutions	WB 1:2000 IF 1:100 Flow Cytometry 1:100

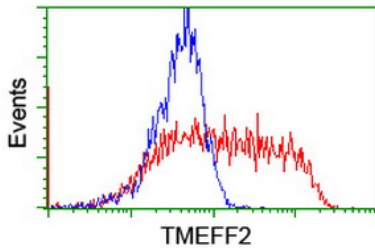
## Anti-TMEFF2 Mouse Monoclonal Antibody [Clone ID: OTI1E1] (M03846-1) Images



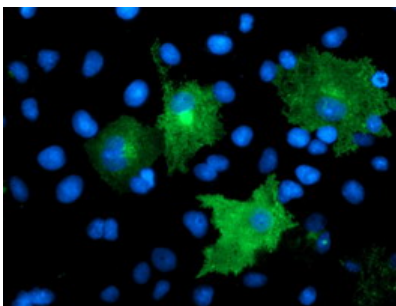
HEK293T cells were transfected with the pCMV6-ENTRY control (Left lane) or pCMV6-ENTRY TMEFF2 (Right lane) cDNA for 48 hrs and lysed. Equivalent amounts of cell lysates (5 ug per lane) were separated by SDS-PAGE and immunoblotted with anti-TMEFF2.



Western blot analysis of extracts (10ug) from 9 Human tissue by using anti-TMEFF2 monoclonal antibody at 1:200 (1: Testis; 2: Omentum; 3: Uterus; 4: Breast; 5: Brain; 6: Liver; 7: Ovary; 8: Thyroid gland; 9: Colon).



HEK293T cells transfected with either TMEFF2 (Myc-DDK-tagged) overexpress plasmid (Red) or empty vector control plasmid (Blue) were immunostained by anti-TMEFF2 antibody (M03846-1)



Anti-TMEFF2 mouse monoclonal antibody (M03846-1) immunofluorescent staining of COS7 cells transiently transfected by pCMV6-ENTRY TMEFF2.

### Submit a product review to [Biocompare.com](https://www.biocompare.com)

Submit a review of this product to [Biocompare.com](https://www.biocompare.com) to receive a \$20 Amazon.com giftcard! Your reviews help your fellow scientists make the right decisions. Thank you for your contribution.



Anti-TMEFF2 Mouse Monoclonal Antibody [Clone ID: OTI1E1]

For Research Use Only. Not for use in diagnostic procedures.