

Anti-BCL2A1/Bcl 2 Related Protein A1 Rabbit Monoclonal Antibody

Catalog Number: M03850

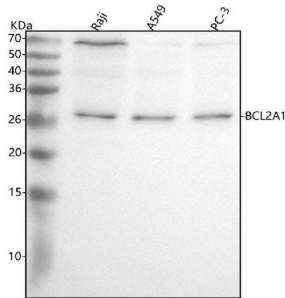
Overview

Product Name	Anti-BCL2A1/Bcl 2 Related Protein A1 Rabbit Monoclonal Antibody
Reactive Species	Human, Mouse, Rat
Description	Boster Bio Anti-BCL2A1/Bcl 2 Related Protein A1 Rabbit Monoclonal Antibody catalog # M03850. Tested in WB, IHC, Flow Cytometry applications. This antibody reacts with Human, Mouse, Rat.
Application	Flow Cytometry, IHC, WB
Clonality	Monoclonal EEE-2
Formulation	Rabbit IgG in stabilizing components, phosphate buffered saline, pH 7.4, 150mM NaCl, 0.02% sodium azide and 50% glycerol. *This antibody is supplied in a stabilized formulation. Compatibility with conjugation reactions depends on the chemistry of the conjugation method used. For conjugation methods that are not compatible with the stabilizing components present in this formulation, a carrier-free antibody format is required.
Storage Instructions	Store at -20°C for one year. For short term storage and frequent use, store at 4°C for up to one month. Avoid repeated freeze-thaw cycles.
Host	Rabbit
Uniprot ID	Q16548

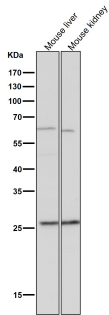
Technical Details

Immunogen	A synthesized peptide derived from human BCL2A1
Isotype	Rabbit IgG
Form	Liquid
Concentration	0.5mg/ml
Purification	Affinity-chromatography
Suggested Dilutions	WB 1:500-2000 IHC 1:50-200 FC 1:20

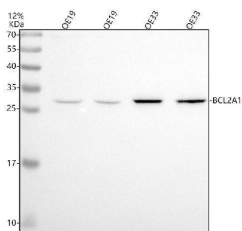
Anti-BCL2A1/Bcl 2 Related Protein A1 Rabbit Monoclonal Antibody (M03850) Images



Western blot analysis of BCL2A1 using anti-BCL2A1 antibody (M03850). Electrophoresis was performed on a 5-20% SDS-PAGE gel at 70V (Stacking gel) / 90V (Resolving gel) for 2-3 hours. The sample well of each lane was loaded with 30 ug of sample under reducing conditions. Lane 1: human Raji whole cell lysates, Lane 2: human A549 whole cell lysates, Lane 3: human PC-3 whole cell lysates. After electrophoresis, proteins were transferred to a nitrocellulose membrane at 150 mA for 50-90 minutes. Blocked the membrane with 5% non-fat milk/TBS for 1.5 hour at RT. The membrane was incubated with rabbit anti-BCL2A1 antigen affinity purified monoclonal antibody (Catalog # M03850) at 1:500 overnight at 4°C, then washed with TBS-0.1%Tween 3 times with 5 minutes each and probed with a goat anti-rabbit IgG-HRP secondary antibody at a dilution of 1:500 for 1.5 hour at RT. The signal is developed using an Enhanced Chemiluminescent detection (ECL) kit (Catalog # EK1002) with Tanon 5200 system. A specific band was detected for BCL2A1 at approximately 27 kDa. The expected band size for BCL2A1 is at 20 kDa.



All lanes use the Antibody at 1:1K dilution for 1 hour at room temperature.



Western blot analysis of Bcl2A1 using anti-Bcl2A1 antibody (M03850). Electrophoresis was performed on a 12% SDS-PAGE gel at 80V (Stacking gel) / 120V (Resolving gel) for 2 hours. The sample well of each lane was loaded with 30 ug of sample under reducing conditions. Lane 1: huamn OE19 whole cell lysates, Lane 2: human OE19 whole cell lysates, Lane 3: human OE33 whole cell lysates, Lane 4: human OE33 whole cell lysates. After electrophoresis, proteins were transferred to a nitrocellulose membrane at 150 mA for 50-90 minutes. Blocked the membrane with 5% non-fat milk/TBS for 1.5 hour at RT. The membrane was incubated with rabbit anti-Bcl2A1 antigen affinity purified monoclonal antibody (M03850) at 0.5 ug/mL overnight at 4°C, then washed with TBS-0.1%Tween-20 3 times with 5 minutes each and probed with a goat anti-rabbit IgG-HRP secondary antibody (Catalog # BA1054) at a dilution of 1:5000 for 1.5 hour at RT. The signal is developed using an ECL Plus Western Blotting Substrate (Catalog # AR1196-200) with Tanon 5200 system. A specific band was detected for Bcl2A1 at approximately ~27 kDa. The expected band size for Bcl2A1 is at ~20 kDa.

Submit a product review to Biocompare.com

Submit a review of this product to Biocompare.com to receive a \$20 Amazon.com giftcard! Your reviews help your fellow scientists make the right decisions. Thank you for your contribution.



Anti-BCL2A1/Bcl 2 Related Protein A1 Rabbit Monoclonal Antibody

For Research Use Only. Not for use in diagnostic procedures.