

Anti-SNW1 Antibody (C-Term)

Catalog Number: M03854

About SNW1

Involved in transcriptional regulation. Modulates TGF- β -mediated transcription via association with SMAD proteins, MYOD1-mediated transcription via association with PABPN1, RB1-mediated transcriptional repression, and retinoid-X receptor (RXR)- and vitamin D receptor (VDR)-dependent gene transcription in a cell line-specific manner probably involving coactivators NCOA1 and GRIP1. Is involved in NOTCH1-mediated transcriptional activation. Binds to multimerized forms of Notch intracellular domain (NICD) and is proposed to recruit transcriptional coactivators such as MAML1 to form an intermediate preactivation complex which associates with DNA-bound CBF-1/RBPJ to form a transcriptional activation complex by releasing SNW1 and redundant NOTCH1 NICD. Proposed to be involved in transcriptional activation by EBV EBNA2 of CBF-1/RBPJ-repressed promoters. Is recruited by HIV-1 Tat to Tat:P-TEFb:TAR RNA complexes and is involved in Tat transcription by recruitment of MYC, MEN1 and TRRAP to the HIV promoter. Functions as a splicing factor in pre-mRNA splicing. Is required in the specific splicing of CDKN1A pre-mRNA; the function probably involves the recruitment of U2AF2 to the mRNA. Is proposed to recruit PP1L1 to the spliceosome. May be involved in cyclin-D1/CCND1 mRNA stability through the SNARP complex which associates with both the 3' end of the CCND1 gene and its mRNA.

Overview

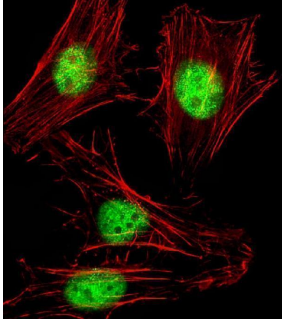
Product Name	Anti-SNW1 Antibody (C-Term)
Reactive Species	Human, Mouse
Description	Boster Bio Anti-SNW1 Antibody (C-Term) (Catalog # M03854). Tested in WB, IF application(s). This antibody reacts with Human, Mouse.
Application	IF, WB
Clonality	Polyclonal
Formulation	Purified polyclonal antibody supplied in PBS with 0.09% (W/V) sodium azide.
Storage Instructions	Maintain refrigerated at 2-8°C for up to 2 weeks. For long-term storage, store at -20°C in small aliquots to prevent freeze-thaw cycles.
Host	Rabbit
Uniprot ID	Q13573

Technical Details

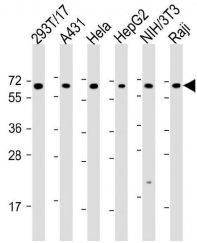
Immunogen	This SNW1 antibody is generated from a rabbit immunized with a KLH conjugated synthetic peptide between 464-497 amino acids from human SNW1.
Predicted Reactive Species	Bovine
Isotype	Rabbit IgG

Purification	This antibody is purified through a protein A column, followed by peptide affinity purification.
Suggested Dilutions	IF: 1:25 WB: 1:2000

Anti-SNW1 Antibody (C-Term) (M03854) Images



Immunofluorescent analysis of 4% paraformaldehyde-fixed, 0.1% Triton X-100 permeabilized HeLa (human cervical epithelial adenocarcinoma cell line) cells labeling SNW1 with M03854 at 1/25 dilution, followed by Dylight® 488-conjugated goat anti-rabbit IgG secondary antibody at 1/200 dilution (green). Immunofluorescence image showing nucleus staining on HeLa cell line. Cytoplasmic actin is detected with Dylight® 554 Phalloidin at 1/100 dilution (red).



All lanes : Anti-SNW1 Antibody (C-Term) at 1:2000 dilution
Lane 1: 293T/17 whole cell lysate
Lane 2: A431 whole cell lysate
Lane 3: HeLa whole cell lysate
Lane 4: HepG2 whole cell lysate
Lane 5: NIH/3T3 whole cell lysate
Lane 6: Raji whole cell lysate
Lysates/proteins at 20 µg per lane.
Secondary Goat Anti-Rabbit IgG, (H+L), Peroxidase conjugated at 1/10000 dilution. Predicted band size : 61 kDa
Blocking/Dilution buffer: 5% NFDN/TBST.

Submit a product review to Biocompare.com

Submit a review of this product to Biocompare.com to receive a \$20 Amazon.com giftcard! Your reviews help your fellow scientists make the right decisions. Thank you for your contribution.



Anti-SNW1 Antibody (C-Term)

For Research Use Only. Not for use in diagnostic procedures.