

Anti-PR3 (PRTN3) Mouse Monoclonal Antibody [Clone ID: OTI9C2]

Catalog Number: M03863-1

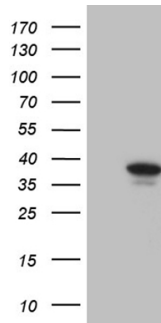
Overview

Product Name	Anti-PR3 (PRTN3) Mouse Monoclonal Antibody [Clone ID: OTI9C2]
Reactive Species	Human
Description	Boster Bio PRTN3 mouse monoclonal antibody, clone OTI9C2. Catalog# M03863-1. Tested in IHC, WB. This antibody reacts with Human.
Application	IHC, WB
Clonality	Monoclonal OTI9C2
Formulation	PBS (pH 7.3) containing 1% stabilizing protein, 50% glycerol and 0.02% sodium azide. This antibody is supplied in a stabilized formulation. Compatibility with conjugation reactions depends on the chemistry of the conjugation method used. For conjugation methods that are not compatible with the stabilizing components present in this formulation, a carrier-free antibody format is required.
Storage Instructions	Store at -20°C as received.
Host	Mouse
Uniprot ID	P24158

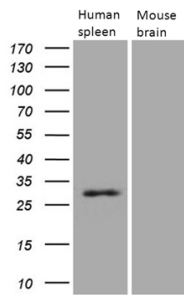
Technical Details

Immunogen	Human recombinant protein fragment corresponding to amino acids 28-248 of human PRTN3 (NP_002768) produced in E.coli.
Isotype	IgG2a
Concentration	1 mg/ml
Purification	Purified from mouse ascites fluids or tissue culture supernatant by affinity chromatography (protein A/G)
Suggested Dilutions	WB 1:500 IHC 1:2000

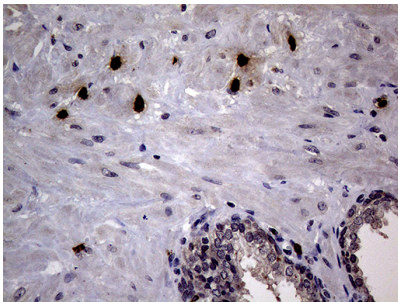
Anti-PR3 (PRTN3) Mouse Monoclonal Antibody [Clone ID: OTI9C2] (M03863-1) Images



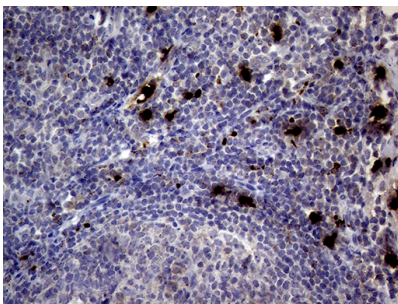
HEK293T cells were transfected with the pCMV6-ENTRY control (Left lane) or pCMV6-ENTRY PRTN3 (Right lane) cDNA for 48 hrs and lysed. Equivalent amounts of cell lysates (5 ug per lane) were separated by SDS-PAGE and immunoblotted with anti-PRTN3 (1:500).



Western blot analysis of extracts (15ug) from human spleen tissue lysate and mouse brain tissue lysate by using anti-PRTN3 monoclonal antibody (1:500).

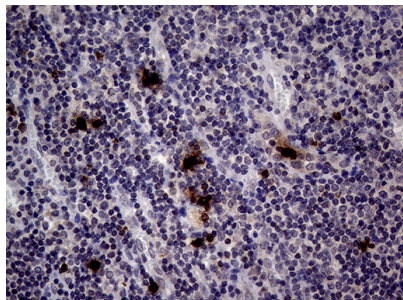
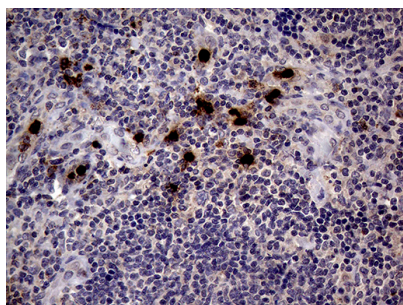


Immunohistochemical staining of paraffin-embedded Human prostate tissue within the normal limits using anti-PRTN3 mouse monoclonal antibody. (Heat-induced epitope retrieval by 1mM EDTA in 10mM Tris buffer (pH8.5) at 120Å°C for 3min)

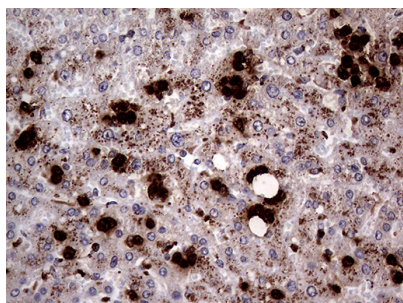


Immunohistochemical staining of paraffin-embedded Human lymph node tissue within the normal limits using anti-PRTN3 mouse monoclonal antibody. (Heat-induced epitope retrieval by 1mM EDTA in 10mM Tris buffer (pH8.5) at 120Å°C for 3min)

Immunohistochemical staining of paraffin-embedded Human lymphoma tissue using anti-PRTN3 mouse monoclonal antibody. (Heat-induced epitope retrieval by 1mM EDTA in 10mM Tris buffer (pH8.5) at 120Å°C for 3min)



Immunohistochemical staining of paraffin-embedded Human tonsil within the normal limits using anti-PRTN3 mouse monoclonal antibody. (Heat-induced epitope retrieval by 1mM EDTA in 10mM Tris buffer (pH8.5) at 120°C for 3min)



Immunohistochemical staining of paraffin-embedded Carcinoma of Human liver tissue using anti-PRTN3 mouse monoclonal antibody. (Heat-induced epitope retrieval by 1mM EDTA in 10mM Tris buffer (pH8.5) at 120°C for 3min)

Submit a product review to Biocompare.com

Submit a review of this product to Biocompare.com to receive a \$20 Amazon.com giftcard! Your reviews help your fellow scientists make the right decisions. Thank you for your contribution.



Anti-PR3 (PRTN3) Mouse Monoclonal Antibody [Clone ID: OT19C2]

For Research Use Only. Not for use in diagnostic procedures.