

## Anti-NROB2 Mouse Monoclonal Antibody [Clone ID: OTI7B5]

Catalog Number: M03866

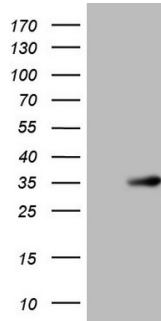
### Overview

Product Name	Anti-NROB2 Mouse Monoclonal Antibody [Clone ID: OTI7B5]
Reactive Species	Human
Description	Boster Bio NROB2 mouse monoclonal antibody, clone OTI7B5 (formerly 7B5). Catalog# M03866. Tested in IHC, WB. This antibody reacts with Human.
Application	IHC, WB
Clonality	Monoclonal OTI7B5
Formulation	PBS (pH 7.3) containing 1% stabilizing protein, 50% glycerol and 0.02% sodium azide. This antibody is supplied in a stabilized formulation. Compatibility with conjugation reactions depends on the chemistry of the conjugation method used. For conjugation methods that are not compatible with the stabilizing components present in this formulation, a carrier-free antibody format is required.
Storage Instructions	Store at -20°C as received.
Host	Mouse
Uniprot ID	Q15466

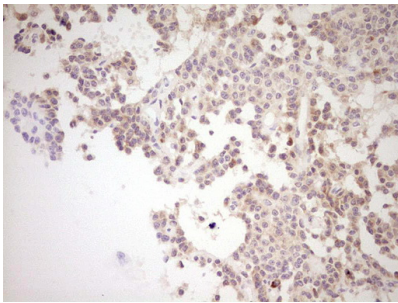
### Technical Details

Immunogen	Full length human recombinant protein of human NROB2 (NP_068804) produced in E.coli.
Isotype	IgG2a
Concentration	1 mg/ml
Purification	Purified from mouse ascites fluids or tissue culture supernatant by affinity chromatography (protein A/G)
Suggested Dilutions	WB 1:2000

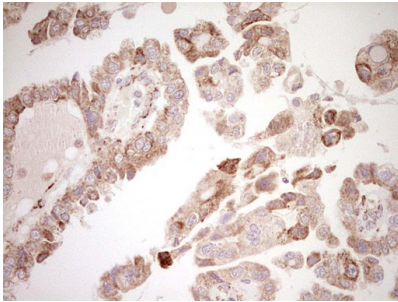
## Anti-NR0B2 Mouse Monoclonal Antibody [Clone ID: OTI7B5] (M03866) Images



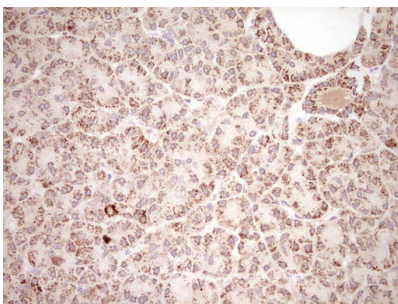
HEK293T cells were transfected with the pCMV6-ENTRY control (Left lane) or pCMV6-ENTRY NR0B2 (Right lane) cDNA for 48 hrs and lysed. Equivalent amounts of cell lysates (5 ug per lane) were separated by SDS-PAGE and immunoblotted with anti-NR0B2.



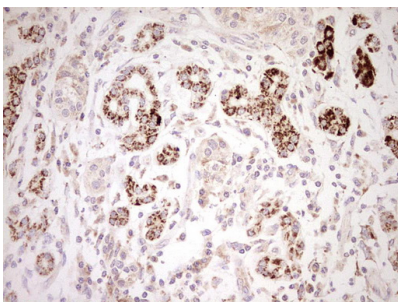
Immunohistochemical staining of paraffin-embedded Carcinoma of Human lung tissue using anti-NR0B2 mouse monoclonal antibody. (Heat-induced epitope retrieval by Tris-EDTA)



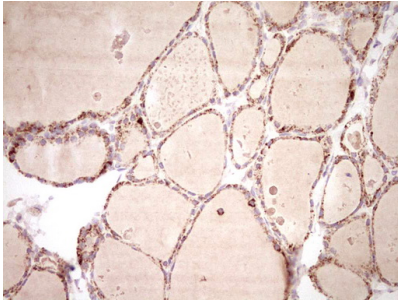
Immunohistochemical staining of paraffin-embedded Adenocarcinoma of Human ovary tissue using anti-NR0B2 mouse monoclonal antibody. (Heat-induced epitope retrieval by Tris-EDTA)



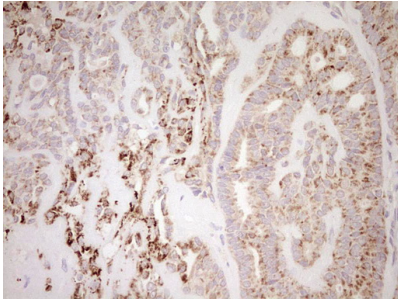
Immunohistochemical staining of paraffin-embedded Human pancreas tissue within the normal limits using anti-NR0B2 mouse monoclonal antibody. (Heat-induced epitope retrieval by Tris-EDTA)



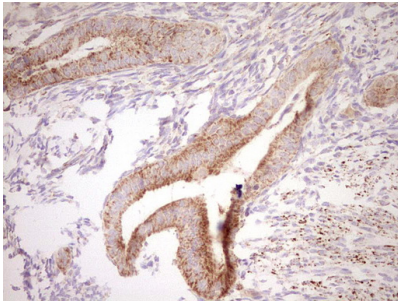
Immunohistochemical staining of paraffin-embedded Carcinoma of Human pancreas tissue using anti-NR0B2 mouse monoclonal antibody. (Heat-induced epitope retrieval by Tris-EDTA)



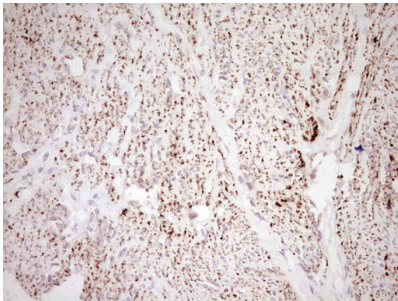
Immunohistochemical staining of paraffin-embedded Human thyroid tissue within the normal limits using anti-NR0B2 mouse monoclonal antibody. (Heat-induced epitope retrieval by Tris-EDTA)



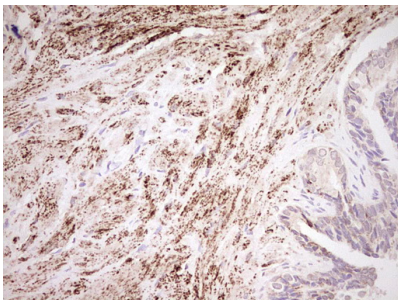
Immunohistochemical staining of paraffin-embedded Carcinoma of Human thyroid tissue using anti-NR0B2 mouse monoclonal antibody. (Heat-induced epitope retrieval by Tris-EDTA)



Immunohistochemical staining of paraffin-embedded Human endometrium tissue within the normal limits using anti-NR0B2 mouse monoclonal antibody. (Heat-induced epitope retrieval by Tris-EDTA)

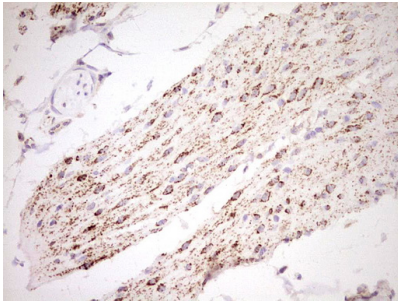


Immunohistochemical staining of paraffin-embedded Adenocarcinoma of Human endometrium tissue using anti-NR0B2 mouse monoclonal antibody. (Heat-induced epitope retrieval by Tris-EDTA)

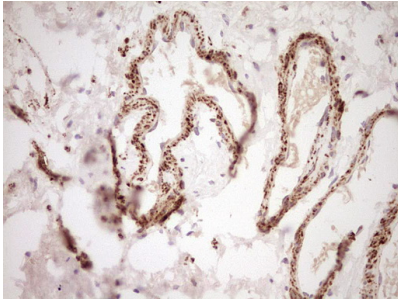


Immunohistochemical staining of paraffin-embedded Human prostate tissue within the normal limits using anti-NR0B2 mouse monoclonal antibody. (Heat-induced epitope retrieval by Tris-EDTA)

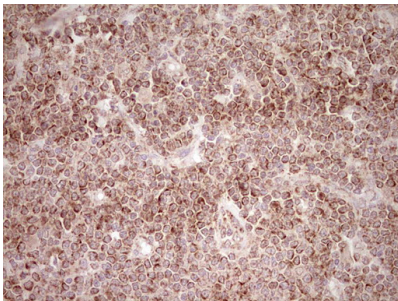
Immunohistochemical staining of paraffin-embedded Human bladder tissue within the normal limits using anti-NR0B2



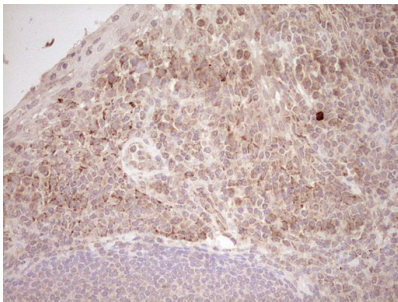
mouse monoclonal antibody. (Heat-induced epitope retrieval by Tris-EDTA)



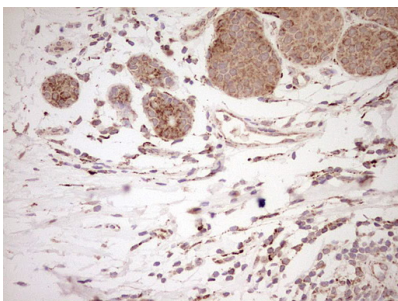
Immunohistochemical staining of paraffin-embedded Carcinoma of Human bladder tissue using anti-NR0B2 mouse monoclonal antibody. (Heat-induced epitope retrieval by Tris-EDTA)



Immunohistochemical staining of paraffin-embedded Human lymphoma tissue using anti-NR0B2 mouse monoclonal antibody. (Heat-induced epitope retrieval by Tris-EDTA)

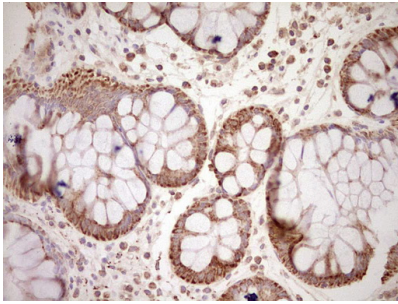


Immunohistochemical staining of paraffin-embedded Human tonsil within the normal limits using anti-NR0B2 mouse monoclonal antibody. (Heat-induced epitope retrieval by Tris-EDTA)

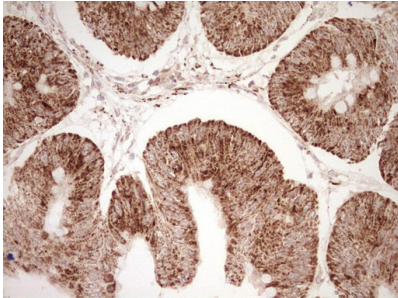


Immunohistochemical staining of paraffin-embedded Adenocarcinoma of Human breast tissue using anti-NR0B2 mouse monoclonal antibody. (Heat-induced epitope retrieval by Tris-EDTA)

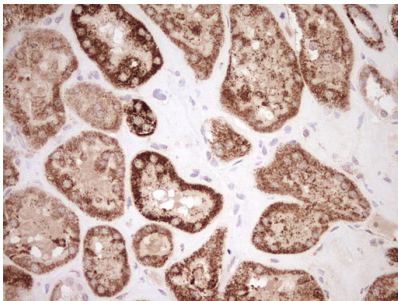
Immunohistochemical staining of paraffin-embedded Human colon tissue within the normal limits using anti-NR0B2 mouse monoclonal antibody. (Heat-induced epitope retrieval)



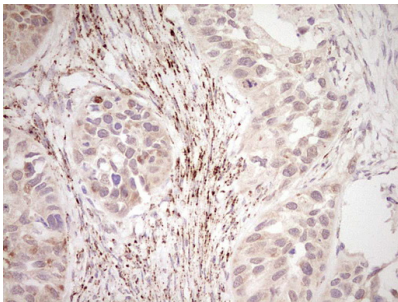
by Tris-EDTA



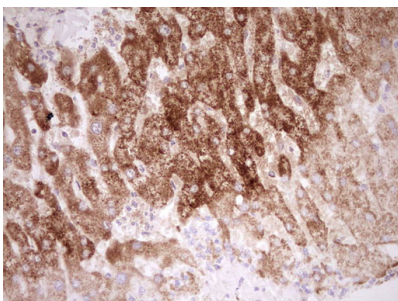
Immunohistochemical staining of paraffin-embedded Adenocarcinoma of Human colon tissue using anti-NR0B2 mouse monoclonal antibody. (Heat-induced epitope retrieval by Tris-EDTA)



Immunohistochemical staining of paraffin-embedded Human Kidney tissue within the normal limits using anti-NR0B2 mouse monoclonal antibody. (Heat-induced epitope retrieval by Tris-EDTA)

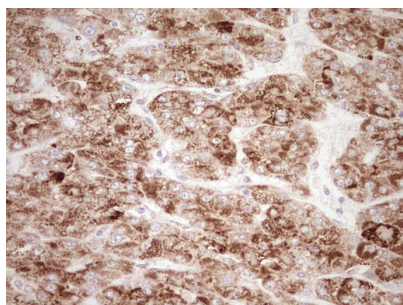


Immunohistochemical staining of paraffin-embedded Carcinoma of Human kidney tissue using anti-NR0B2 mouse monoclonal antibody. (Heat-induced epitope retrieval by Tris-EDTA)



Immunohistochemical staining of paraffin-embedded Human liver tissue within the normal limits using anti-NR0B2 mouse monoclonal antibody. (Heat-induced epitope retrieval by Tris-EDTA)

Immunohistochemical staining of paraffin-embedded Carcinoma of Human liver tissue using anti-NR0B2 mouse monoclonal antibody. (Heat-induced epitope retrieval by Tris-



EDTA

## Submit a product review to Biocompare.com

Submit a review of this product to Biocompare.com to receive a \$20 Amazon.com giftcard! Your reviews help your fellow scientists make the right decisions. Thank you for your contribution.



Anti-NROB2 Mouse Monoclonal Antibody [Clone ID: OTI7B5]

For Research Use Only. Not for use in diagnostic procedures.