

## Anti-NORE1 (RASSF5) Mouse Monoclonal Antibody [Clone ID: OTI1H2]

Catalog Number: M03885

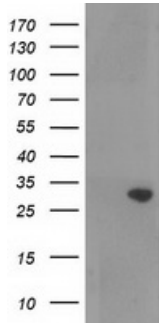
### Overview

|                      |  |
|----------------------|--|
| Product Name         | Anti-NORE1 (RASSF5) Mouse Monoclonal Antibody [Clone ID: OTI1H2]   |
| Reactive Species     | Human, Mouse, Rat  |
| Description          | Boster Bio RASSF5 (NORE1) mouse monoclonal antibody, clone OTI1H2 (formerly 1H2). Catalog# M03885. Tested in FC, WB. This antibody reacts with Human, Mouse, Rat.  |
| Application          | Flow Cytometry, WB   |
| Clonality            | Monoclonal OTI1H2  |
| Formulation          | PBS (pH 7.3) containing 1% stabilizing protein, 50% glycerol and 0.02% sodium azide. This antibody is supplied in a stabilized formulation. Compatibility with conjugation reactions depends on the chemistry of the conjugation method used. For conjugation methods that are not compatible with the stabilizing components present in this formulation, a carrier-free antibody format is required. |
| Storage Instructions | Store at -20°C as received.  |
| Host                 | Mouse  |
| Uniprot ID           | Q8WWW0   |

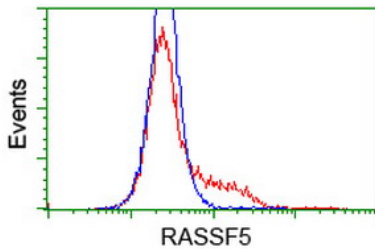
### Technical Details

|                     |   |
|---------------------|---|
| Immunogen           | Full length human recombinant protein of human RASSF5 (NP_872606) produced in HEK293T cell.               |
| Isotype             | IgG1  |
| Concentration       | 0.41 mg/ml  |
| Purification        | Purified from mouse ascites fluids or tissue culture supernatant by affinity chromatography (protein A/G) |
| Suggested Dilutions | WB 1:500<br>Flow Cytometry 1:100  |

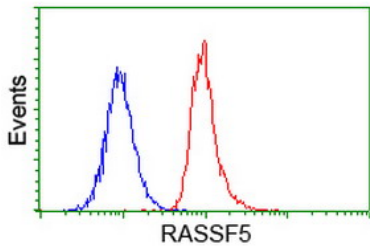
## Anti-NORE1 (RASSF5) Mouse Monoclonal Antibody [Clone ID: OT11H2] (M03885) Images



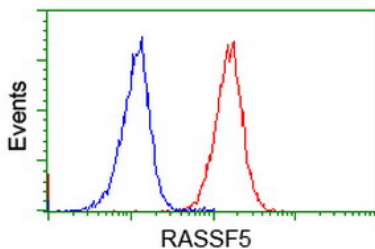
HEK293T cells were transfected with the pCMV6-ENTRY control (Left lane) or pCMV6-ENTRY RASSF5 (Right lane) cDNA for 48 hrs and lysed. Equivalent amounts of cell lysates (5 ug per lane) were separated by SDS-PAGE and immunoblotted with anti-RASSF5.



HEK293T cells transfected with either RASSF5 (Myc-DDK-tagged) overexpress plasmid (Red) or empty vector control plasmid (Blue) were immunostained by anti-RASSF5 antibody (M03885)



Flow cytometric Analysis of HeLa cells



Flow cytometric Analysis of Jurkat cells

**Submit a product review to [Biocompare.com](https://www.biocompare.com)**

Submit a review of this product to [Biocompare.com](https://www.biocompare.com) to receive a \$20 Amazon.com giftcard! Your reviews help your fellow scientists make the right decisions. Thank you for your contribution.



Anti-NORE1 (RASSF5) Mouse Monoclonal Antibody [Clone ID: OT11H2]

For Research Use Only. Not for use in diagnostic procedures.