

Anti-Kallikrein 8 (KLK8) Mouse Monoclonal Antibody [Clone ID: OTI6F2]

Catalog Number: M03901-2

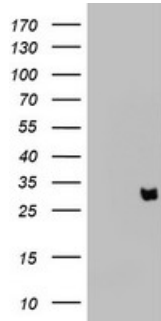
Overview

Product Name	Anti-Kallikrein 8 (KLK8) Mouse Monoclonal Antibody [Clone ID: OTI6F2]
Reactive Species	Human
Description	Boster Bio KLK8 mouse monoclonal antibody, clone OTI6F2 (formerly 6F2). Catalog# M03901-2. Tested in FC, IHC, WB. This antibody reacts with Human.
Application	Flow Cytometry, IHC, WB
Clonality	Monoclonal OTI6F2
Formulation	PBS (pH 7.3) containing 1% stabilizing protein, 50% glycerol and 0.02% sodium azide. This antibody is supplied in a stabilized formulation. Compatibility with conjugation reactions depends on the chemistry of the conjugation method used. For conjugation methods that are not compatible with the stabilizing components present in this formulation, a carrier-free antibody format is required.
Storage Instructions	Store at -20°C as received.
Host	Mouse
Uniprot ID	O60259

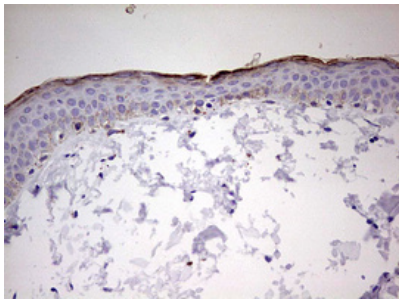
Technical Details

Immunogen	Human recombinant protein fragment corresponding to amino acids 33-260 of human KLK8 (NP_009127) produced in SF9 cell.
Isotype	IgG1
Concentration	1 mg/ml
Purification	Purified from mouse ascites fluids or tissue culture supernatant by affinity chromatography (protein A/G)
Suggested Dilutions	WB 1:2000

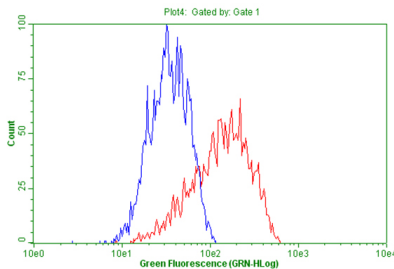
Anti-Kallikrein 8 (KLK8) Mouse Monoclonal Antibody [Clone ID: OTI6F2] (M03901-2) Images



HEK293T cells were transfected with the pCMV6-ENTRY control (Left lane) or pCMV6-ENTRY KLK8 (Right lane) cDNA for 48 hrs and lysed. Equivalent amounts of cell lysates (5 ug per lane) were separated by SDS-PAGE and immunoblotted with anti-KLK8.



Immunohistochemical staining of paraffin-embedded Human skin tissue using anti-KLK8 mouse monoclonal antibody. (M03901-2) Dilution: 1:150



Flow cytometric Analysis of living OVCAR-3 cells

Submit a product review to Biocompare.com

Submit a review of this product to Biocompare.com to receive a \$20 Amazon.com giftcard! Your reviews help your fellow scientists make the right decisions. Thank you for your contribution.



Anti-Kallikrein 8 (KLK8) Mouse Monoclonal Antibody [Clone ID: OTI6F2]

For Research Use Only. Not for use in diagnostic procedures.