

## Anti-hCD6 Antibody (Monoclonal, SPV14)

Catalog Number: M03913

### About CD6

This monoclonal antibody recognizes an epitope within the 74-182 C-terminal sequence (11kD peptide fragment) of human serum Cellular Retinol Binding Protein 1 (CRBP 1), a single-chain glycoprotein belonging to the superfamily of hydrophobic molecule transporter proteins, which is responsible for transport of retinol (vitamin A1) from the liver to peripheral target tissues, like the eye, where it mediates the cellular uptake. CRBP 1 is synthesized by hepatic parenchymal cells where it becomes bound to its ligand retinol and is then released into the circulation, where it binds further to the protein transthyretin, to form a transporting complex, which is big enough not to be lost by filtration through the kidney glomeruli. It is detected in nearly all tissues with higher expression in adult ovary, pancreas, pituitary gland, adrenal gland, and fetal liver.

### Overview

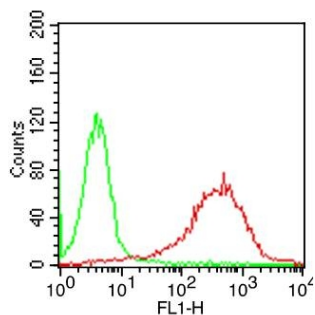
Product Name	Anti-hCD6 Antibody (Monoclonal, SPV14)
Reactive Species	Human
Description	Boster Bio Anti-hCD6 Antibody (Monoclonal, SPV14) (Catalog# M03913). Tested in FACS application(s). This antibody reacts with Human.
Conjugate	Biotin
Application	FACS
Clonality	Monoclonal SPV14
Formulation	100 µg in 200 µl PBS containing 0.05% stabilizing protein and 0.05% sodium azide This antibody is supplied in a stabilized formulation. Compatibility with conjugation reactions depends on the chemistry of the conjugation method used. For conjugation methods that are not compatible with the stabilizing components present in this formulation, a carrier-free antibody format is required.
Storage Instructions	Store the antibody at 4°C, stable for 6 months. For long-term storage, store at -20°C. Avoid repeated freeze and thaw cycles.
Host	Mouse
Uniprot ID	P30203

### Technical Details

Immunogen	CD8+ cytotoxic T-cells
Predicted Reactive Species	Pig, Rabbit
Cross Reactivity	Does not cross-react with primate, avian or amphibian GR.
Isotype	IgG2a Kappa

Form	Liquid
Concentration	0.5-1mg/ml, actual concentration vary by lot. Use suggested dilution ratio to decide dilution procedure.
Purification	Protein G Chromatography
Suggested Dilutions	FACS: 0.5-1 $\mu\text{g}/10^6$ cells

## Anti-hCD6 Antibody (Monoclonal, SPV14) (M03913) Images



Cell Surface flow analysis of hCD6 in PBMC (Lymphocyte gated) using 0.5  $\mu$ g/ml

### Submit a product review to Biocompare.com

Submit a review of this product to Biocompare.com to receive a \$20 Amazon.com giftcard! Your reviews help your fellow scientists make the right decisions. Thank you for your contribution.



Anti-hCD6 Antibody (Monoclonal, SPV14)

For Research Use Only. Not for use in diagnostic procedures.