

Anti-Hu CD161 Purified KLRB1 Monoclonal Antibody

Catalog Number: M03917-1

About KLRB1

CD161, also known as Nkrp1 (natural killer receptor protein 1) or Klrp1 (killer cell lectin-like receptor subfamily b member 1), is a disulphide-linked homodimeric receptor, which is involved in regulation of NK cell and NKT cell function. It is expressed on rat NK cells, subset of T cells, dendritic cells, and activated monocytes. Although human CD161 is expressed as one isoform, the rat CD161 has three isoforms, referred to as CD161a, b, and c. These proteins contain C-terminal C-type lectin extracellular domain, a transmembrane domain, and N-terminal intracellular domain, which contains ITIM motif, such as CD161b, and displays inhibitory function, or does not contain ITIM motif, thus also not the inhibitory function, such as CD161a.

Overview

Product Name	Anti-Hu CD161 Purified KLRB1 Monoclonal Antibody
Reactive Species	Human, Primate
Description	Boster Bio Anti-Hu CD161 Purified KLRB1 Monoclonal Antibody (Catalog# M03917-1). Tested in Flow Cytometry, WB, IHC-F application(s). This antibody reacts with Primate, Human.
Application	Flow Cytometry, IHC-F, WB
Clonality	Monoclonal HP-3G10
Formulation	Phosphate buffered saline (PBS), pH 7.4, 15 mM sodium azide
Storage Instructions	Store at 2-8°C. Do not freeze.
Host	Mouse
Uniprot ID	Q12918

Technical Details

Immunogen	Human NK cells. The mouse monoclonal antibody HP-3G10 recognizes an extracellular epitope of CD161, a type II transmembrane C-type lectin receptor, expressed on the plasma membrane of NK cells, dendritic cells, activated monocytes and a subset of T cells as a disulphide-linked homodimer.
Predicted Reactive Species	Primate
Cross Reactivity	This antibody does not cross-react with Thy-1.1 alloantigen.
Isotype	Mouse IgG1 kappa
Form	Liquid
Concentration	1 mg/ml

Purification	Purified by protein-A affinity chromatography.
Suggested Dilutions	<p>Dilute the sample so that the expected range of concentrations fall within the detection range of this kit.</p> <p>If the expected range of concentration is unknown, a pilot test should be conducted to decide the optimal dilution ratio for your samples.</p> <p>Some PubMed article(s) citing the expression level of this target are as follows:</p> <p>Boster Bio's internal QC testing used:</p> <p>Flow cytometry: 1-4 ug/ml.</p>

Anti-Hu CD161 Purified KLRB1 Monoclonal Antibody (M03917-1) Images

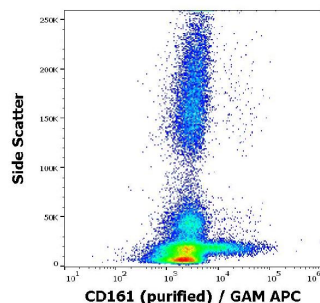


Figure 1. Flow Cytometry validation of KLRB1 using Anti-Hu CD161 Purified KLRB1 Monoclonal Antibody (M03917-1).

Flow cytometry surface staining pattern of human peripheral blood cells stained using anti-human CD161 (HP-3G10) purified antibody (concentration in sample 4 ug/ml) GAM APC.

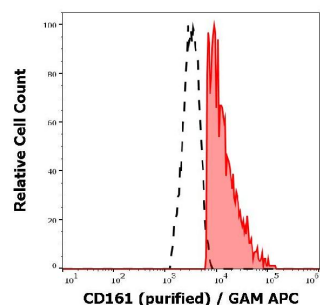


Figure 2. Flow Cytometry validation of KLRB1 using Anti-Hu CD161 Purified KLRB1 Monoclonal Antibody (M03917-1).

Separation of human CD161 positive lymphocytes (red-filled) from neutrophil granulocytes (black-dashed) in flow cytometry analysis (surface staining) of human peripheral whole blood stained using anti-human CD161 (HP-3G10) purified antibody (concentration in sample 4 ug/ml) GAM APC.

Submit a product review to Biocompare.com

Submit a review of this product to Biocompare.com to receive a \$20 Amazon.com giftcard! Your reviews help your fellow scientists make the right decisions. Thank you for your contribution.



Anti-Hu CD161 Purified KLRB1 Monoclonal Antibody