

Anti-Perilipin A PLIN1 Rabbit Monoclonal Antibody

Catalog Number: M03918

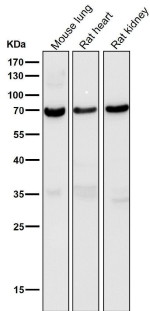
Overview

Product Name	Anti-Perilipin A PLIN1 Rabbit Monoclonal Antibody
Reactive Species	Human, Mouse
Description	Boster Bio Anti-Perilipin A PLIN1 Rabbit Monoclonal Antibody catalog # M03918. Tested in WB, ICC/IF applications. This antibody reacts with Human, Mouse.
Application	IF, ICC, WB
Clonality	Monoclonal AAED-16
Formulation	Rabbit IgG in stabilizing components, phosphate buffered saline, pH 7.4, 150mM NaCl, 0.02% sodium azide and 50% glycerol. *This antibody is supplied in a stabilized formulation. Compatibility with conjugation reactions depends on the chemistry of the conjugation method used. For conjugation methods that are not compatible with the stabilizing components present in this formulation, a carrier-free antibody format is required.
Storage Instructions	Store at -20°C for one year. For short term storage and frequent use, store at 4°C for up to one month. Avoid repeated freeze-thaw cycles.
Host	Rabbit
Uniprot ID	O60240

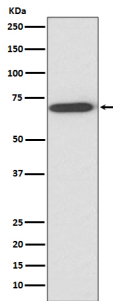
Technical Details

Immunogen	A synthesized peptide derived from human Perilipin A
Isotype	Rabbit IgG
Form	Liquid
Concentration	0.5mg/ml
Purification	Affinity-chromatography
Suggested Dilutions	WB 1:500-2000 ICC/IF 1:50-200

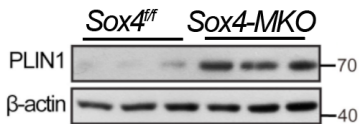
Anti-Perilipin A PLIN1 Rabbit Monoclonal Antibody (M03918) Images



All lanes use the Antibody at 1:3K dilution for 1 hour at room temperature.



Western blot analysis of Perilipin A expression in human fetal liver lysate.



Western blot analysis of PLIN1 using anti-PLIN1 antibody (M03918). Electrophoresis was performed on a 5-20% SDS-PAGE gel at 80V (Stacking gel) / 120V (Resolving gel) for 2 hours. The sample well of each lane was loaded with 30 ug of sample under reducing conditions. Lane 1-3: mouse Brown Adipose Tissue-f/f, Lane 4-6: mouse Brown Adipose Tissue-mko, After electrophoresis, proteins were transferred to a nitrocellulose membrane at 150 mA for 50-90 minutes. Blocked the membrane with 5% non-fat milk/TBS for 1.5 hour at RT. The membrane was incubated with rabbit anti-PLIN1 antigen affinity purified polyclonal antibody (A04887-1) at 1:1000 overnight at 4°C, then washed with TBS-0.1%Tween 3 times with 5 minutes each and probed with a Goat Anti-Rabbit IgG Antibody at a dilution of 1:5000 for 1 hour at RT. The signal is developed using an ECL Plus Western Blotting Substrate (Catalog # AR1196-200) with Abbkine system. The expected band size for PLIN1 is at 56 kDa.

Submit a product review to Biocompare.com

Submit a review of this product to Biocompare.com to receive a \$20 Amazon.com giftcard! Your reviews help your fellow scientists make the right decisions. Thank you for your contribution.



Anti-Perilipin A PLIN1 Rabbit Monoclonal Antibody

For Research Use Only. Not for use in diagnostic procedures.