

Anti-FRA1 (FOSL1) Mouse Monoclonal Antibody [Clone ID: OTI12F9]

Catalog Number: M03927

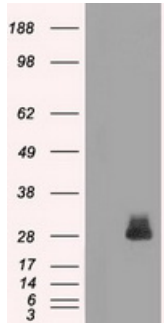
Overview

Product Name	Anti-FRA1 (FOSL1) Mouse Monoclonal Antibody [Clone ID: OTI12F9]
Reactive Species	Human, Mouse, Rat
Description	Boster Bio Anti-FOSL1 (FRA1) mouse monoclonal antibody, clone OTI12F9 (formerly 12F9). Catalog# M03927. Tested in IHC, WB. This antibody reacts with Human, Mouse, Rat.
Application	IHC, WB
Clonality	Monoclonal OTI12F9
Formulation	PBS (pH 7.3) containing 1% stabilizing protein, 50% glycerol and 0.02% sodium azide. This antibody is supplied in a stabilized formulation. Compatibility with conjugation reactions depends on the chemistry of the conjugation method used. For conjugation methods that are not compatible with the stabilizing components present in this formulation, a carrier-free antibody format is required.
Storage Instructions	Store at -20°C as received.
Host	Mouse
Uniprot ID	P15407

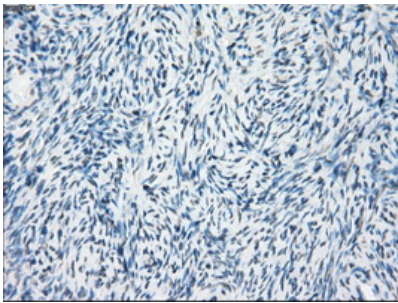
Technical Details

Immunogen	Full-length protein expressed in 293T cell transfected with human FOSL1 expression vector
Isotype	IgG2b
Concentration	1.1 mg/ml
Purification	Purified from mouse ascites fluids or tissue culture supernatant by affinity chromatography (protein A/G)
Suggested Dilutions	WB: 1:2000 IHC: 1:50

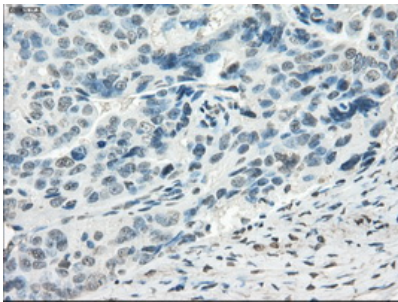
Anti-FRA1 (FOSL1) Mouse Monoclonal Antibody [Clone ID: OTI12F9] (M03927) Images



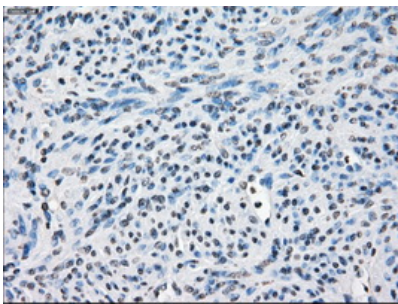
HEK293T cells were transfected with the pCMV6-ENTRY control (Left lane) or pCMV6-ENTRY FOSL1 (Right lane) cDNA for 48 hrs and lysed. Equivalent amounts of cell lysates (5 ug per lane) were separated by SDS-PAGE and immunoblotted with anti-FOSL1.



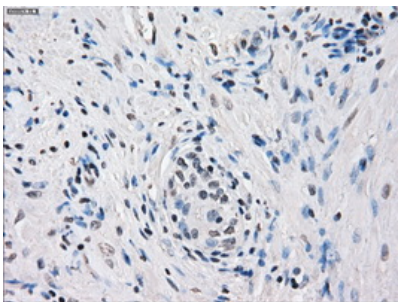
Immunohistochemical staining of paraffin-embedded Ovary tissue within the normal limits using anti-FOSL1 mouse monoclonal antibody. (Heat-induced epitope retrieval by 10mM citric buffer)



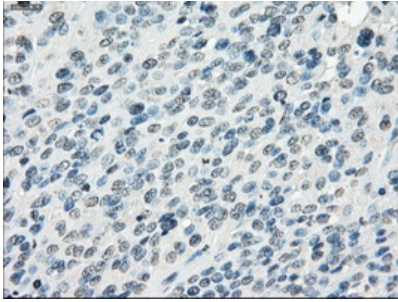
Immunohistochemical staining of paraffin-embedded Adenocarcinoma of ovary tissue using anti-FOSL1 mouse monoclonal antibody. (Heat-induced epitope retrieval by 10mM citric buffer)



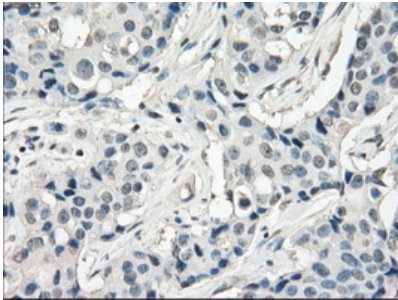
Immunohistochemical staining of paraffin-embedded endometrium tissue within the normal limits using anti-FOSL1 mouse monoclonal antibody. (Heat-induced epitope retrieval by 10mM citric buffer)



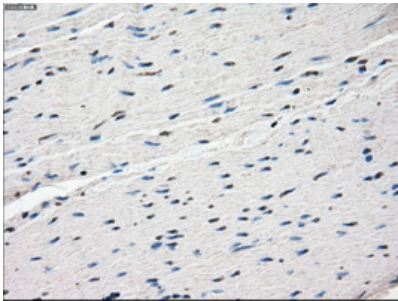
Immunohistochemical staining of paraffin-embedded prostate tissue within the normal limits using anti-FOSL1 mouse monoclonal antibody. (Heat-induced epitope retrieval by 10mM citric buffer)



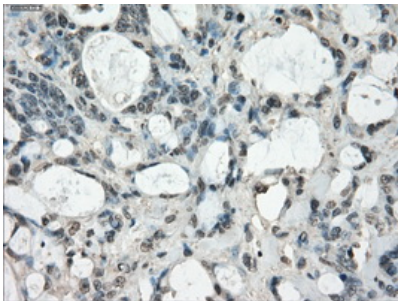
Immunohistochemical staining of paraffin-embedded Carcinoma of bladder tissue using anti-FOSL1 mouse monoclonal antibody. (Heat-induced epitope retrieval by 10mM citric buffer)



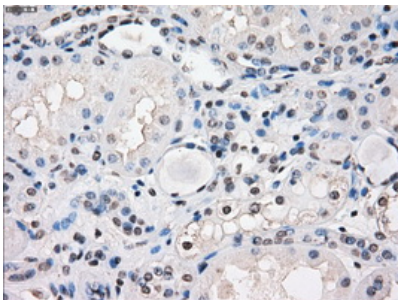
Immunohistochemical staining of paraffin-embedded Adenocarcinoma of breast tissue using anti-FOSL1 mouse monoclonal antibody. (Heat-induced epitope retrieval by 10mM citric buffer)



Immunohistochemical staining of paraffin-embedded colon tissue within the normal limits using anti-FOSL1 mouse monoclonal antibody. (Heat-induced epitope retrieval by 10mM citric buffer)



Immunohistochemical staining of paraffin-embedded Adenocarcinoma of colon tissue using anti-FOSL1 mouse monoclonal antibody. (Heat-induced epitope retrieval by 10mM citric buffer)



Immunohistochemical staining of paraffin-embedded Kidney tissue within the normal limits using anti-FOSL1 mouse monoclonal antibody. (Heat-induced epitope retrieval by 10mM citric buffer)

Submit a review of this product to Biocompare.com to receive a \$20 Amazon.com giftcard! Your reviews help your fellow scientists make the right decisions. Thank you for your contribution.



Anti-FRA1 (FOSL1) Mouse Monoclonal Antibody [Clone ID: OT112F9]

For Research Use Only. Not for use in diagnostic procedures.