

Anti-p60 CAF1 (CHAF1B) Mouse Monoclonal Antibody [Clone ID: OTI4F7]

Catalog Number: M03959

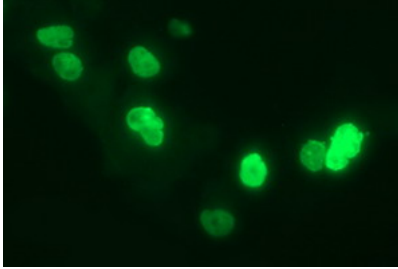
Overview

Product Name	Anti-p60 CAF1 (CHAF1B) Mouse Monoclonal Antibody [Clone ID: OTI4F7]
Reactive Species	Dog, Human, Monkey, Mouse, Rat
Description	Boster Bio CHAF1B mouse monoclonal antibody, clone OTI4F7 (formerly 4F7). Catalog# M03959. Tested in IF, IHC, WB. This antibody reacts with Human, Monkey, Mouse, Rat, Dog.
Conjugate	Unconjugated
Application	IF, IHC, WB
Clonality	Monoclonal OTI4F7
Formulation	PBS (pH 7.3) containing 1% stabilizing protein, 50% glycerol and 0.02% sodium azide. This antibody is supplied in a stabilized formulation. Compatibility with conjugation reactions depends on the chemistry of the conjugation method used. For conjugation methods that are not compatible with the stabilizing components present in this formulation, a carrier-free antibody format is required.
Storage Instructions	Store at -20°C for one year. For short term storage and frequent use, store at 4°C for up to one month. Avoid repeated freeze-thaw cycles.
Host	Mouse
Uniprot ID	Q13112

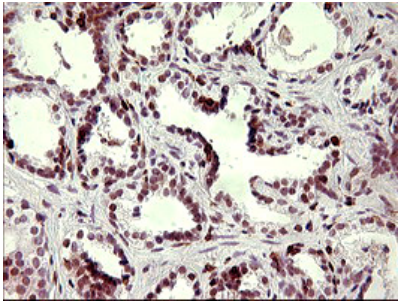
Technical Details

Immunogen	Full length human recombinant protein of human CHAF1B (NP_005432) produced in HEK293T cell.
Isotype	IgG1
Concentration	1 mg/ml
Purification	Purified from mouse ascites fluids or tissue culture supernatant by affinity chromatography (protein A/G)
Suggested Dilutions	WB 1:200~1000 IHC 1:150 IF 1:100

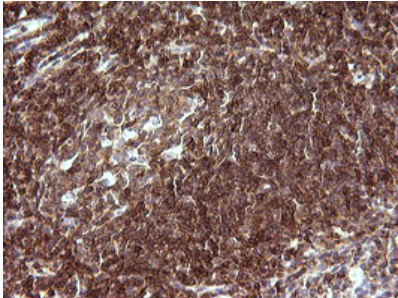
Anti-p60 CAF1 (CHAF1B) Mouse Monoclonal Antibody [Clone ID: OTI4F7] (M03959) Images



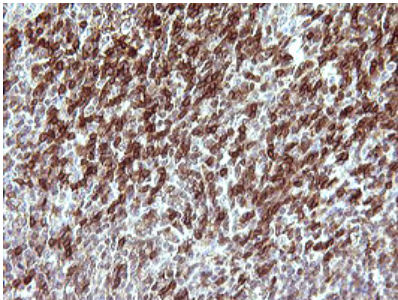
Anti-CHAF1B mouse monoclonal antibody (M03959) immunofluorescent staining of COS7 cells transiently transfected by pCMV6-ENTRY CHAF1B.



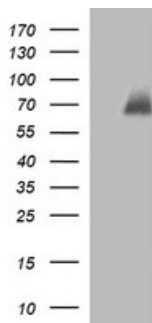
Immunohistochemical staining of paraffin-embedded Carcinoma of Human prostate tissue using anti-CHAF1B mouse monoclonal antibody. (Heat-induced epitope retrieval by 10mM citric buffer)



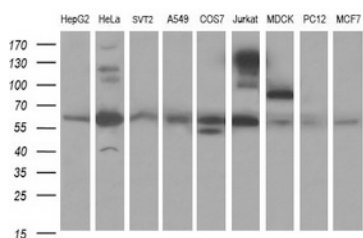
Immunohistochemical staining of paraffin-embedded Human lymph node tissue within the normal limits using anti-CHAF1B mouse monoclonal antibody. (Heat-induced epitope retrieval by 10mM citric buffer)



Immunohistochemical staining of paraffin-embedded Human lymphoma tissue using anti-CHAF1B mouse monoclonal antibody. (Heat-induced epitope retrieval by 10mM citric buffer)



HEK293T cells were transfected with the pCMV6-ENTRY control (Left lane) or pCMV6-ENTRY CHAF1B (Right lane) cDNA for 48 hrs and lysed. Equivalent amounts of cell lysates (5 ug per lane) were separated by SDS-PAGE and immunoblotted with anti-CHAF1B.



Western blot analysis of extracts (35ug) from 9 different cell lines by using anti-CHAF1B monoclonal antibody (HepG2: human; HeLa: human; SVT2: mouse; A549: human; COS7: monkey; Jurkat: human; MDCK: canine; PC12: rat; MCF7: human).

Submit a product review to Biocompare.com

Submit a review of this product to Biocompare.com to receive a \$20 Amazon.com giftcard! Your reviews help your fellow scientists make the right decisions. Thank you for your contribution.



Anti-p60 CAF1 (CHAF1B) Mouse Monoclonal Antibody [Clone ID: OTI4F7]

For Research Use Only. Not for use in diagnostic procedures.