

Anti-BTG1 Mouse Monoclonal Antibody [Clone ID: OTI7H6]

Catalog Number: M03967

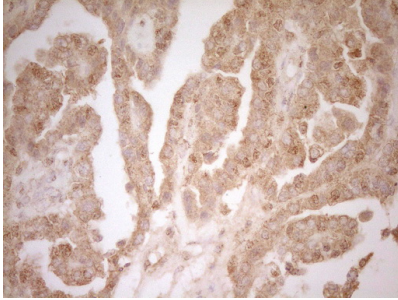
Overview

Product Name	Anti-BTG1 Mouse Monoclonal Antibody [Clone ID: OTI7H6]
Reactive Species	Human, Mouse, Rat
Description	Boster Bio BTG1 mouse monoclonal antibody, clone OTI7H6 (formerly 7H6). Catalog# M03967. Tested in IHC. This antibody reacts with Human, Mouse, Rat.
Application	IHC
Clonality	Monoclonal OTI7H6
Formulation	PBS (pH 7.3) containing 1% stabilizing protein, 50% glycerol and 0.02% sodium azide. This antibody is supplied in a stabilized formulation. Compatibility with conjugation reactions depends on the chemistry of the conjugation method used. For conjugation methods that are not compatible with the stabilizing components present in this formulation, a carrier-free antibody format is required.
Storage Instructions	Store at -20°C as received.
Host	Mouse
Uniprot ID	P62324

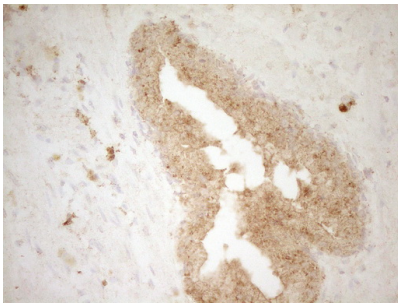
Technical Details

Immunogen	Full length human recombinant protein of human BTG1 (NP_001722) produced in E.coli.
Isotype	IgG1
Concentration	1 mg/ml
Purification	Purified from mouse ascites fluids or tissue culture supernatant by affinity chromatography (protein A/G)
Suggested Dilutions	IHC 1:150

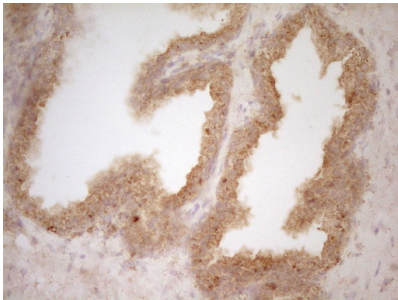
Anti-BTG1 Mouse Monoclonal Antibody [Clone ID: OT17H6] (M03967) Images



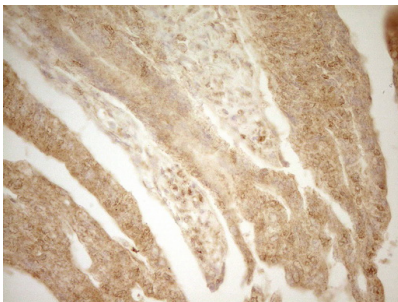
Immunohistochemical staining of paraffin-embedded Adenocarcinoma of Human ovary tissue using anti-BTG1 mouse monoclonal antibody. (Heat-induced epitope retrieval by 1 mM EDTA in 10mM Tris)



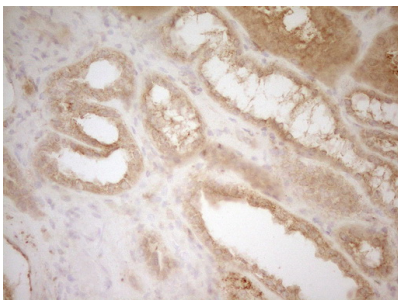
Immunohistochemical staining of paraffin-embedded Adenocarcinoma of Human endometrium tissue using anti-BTG1 mouse monoclonal antibody. (Heat-induced epitope retrieval by 1 mM EDTA in 10mM Tris)



Immunohistochemical staining of paraffin-embedded Carcinoma of Human prostate tissue using anti-BTG1 mouse monoclonal antibody. (Heat-induced epitope retrieval by 1 mM EDTA in 10mM Tris)



Immunohistochemical staining of paraffin-embedded Adenocarcinoma of Human colon tissue using anti-BTG1 mouse monoclonal antibody. (Heat-induced epitope retrieval by 1 mM EDTA in 10mM Tris)



Immunohistochemical staining of paraffin-embedded Human Kidney tissue within the normal limits using anti-BTG1 mouse monoclonal antibody. (Heat-induced epitope retrieval by 1 mM EDTA in 10mM Tris)

Submit a product review to Biocompare.com

Submit a review of this product to Biocompare.com to receive a \$20 Amazon.com giftcard! Your reviews help your fellow scientists make the right decisions. Thank you for your contribution.



Anti-BTG1 Mouse Monoclonal Antibody [Clone ID: OT17H6]

For Research Use Only. Not for use in diagnostic procedures.