

## Anti-LYVE1 Mouse Monoclonal Antibody [Clone ID: OTI5H3]

Catalog Number: M04027-1

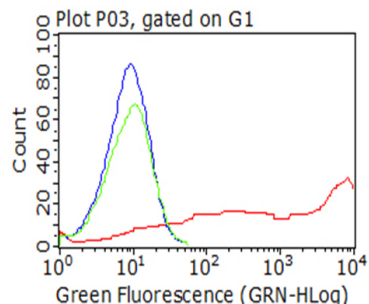
### Overview

Product Name	Anti-LYVE1 Mouse Monoclonal Antibody [Clone ID: OTI5H3]
Reactive Species	Human
Description	Boster Bio LYVE1 mouse monoclonal antibody, clone OTI5H3. Catalog# M04027-1. Tested in FC. This antibody reacts with Human.
Conjugate	Unconjugated
Application	Flow Cytometry
Clonality	Monoclonal OTI5H3
Formulation	PBS (pH 7.3) containing 1% stabilizing protein, 50% glycerol and 0.02% sodium azide. This antibody is supplied in a stabilized formulation. Compatibility with conjugation reactions depends on the chemistry of the conjugation method used. For conjugation methods that are not compatible with the stabilizing components present in this formulation, a carrier-free antibody format is required.
Storage Instructions	Store at -20°C for one year. For short term storage and frequent use, store at 4°C for up to one month. Avoid repeated freeze-thaw cycles.
Host	Mouse
Uniprot ID	Q9Y5Y7

### Technical Details

Immunogen	Human recombinant protein fragment corresponding to amino acids 20-238 of human LYVE1 (NP_006682) produced in HEK293T cell.
Isotype	IgG1
Concentration	1 mg/ml
Purification	Purified from mouse ascites fluids or tissue culture supernatant by affinity chromatography (protein A/G)
Suggested Dilutions	Flow Cytometry 1:100

## Anti-LYVE1 Mouse Monoclonal Antibody [Clone ID: OTI5H3] (M04027-1) Images



HEK293T cells transfected with either LYVE1 (Myc-DDK-tagged) overexpress plasmid (Red) or empty vector control plasmid (Blue) were immunostained by anti-LYVE1 antibody (M04027-1)

### Submit a product review to Biocompare.com

Submit a review of this product to Biocompare.com to receive a \$20 Amazon.com giftcard! Your reviews help your fellow scientists make the right decisions. Thank you for your contribution.



Anti-LYVE1 Mouse Monoclonal Antibody [Clone ID: OTI5H3]

For Research Use Only. Not for use in diagnostic procedures.