

Anti-(Mouse) Melk Antibody (C-term)

Catalog Number: M04038

About Melk

Serine/threonine-protein kinase involved in various processes such as cell cycle regulation, self-renewal of stem cells, apoptosis and splicing regulation. Has a broad substrate specificity; phosphorylates BCL2L14, CDC25B, MAP3K5/ASK1 and ZNF622. Acts as an activator of apoptosis by phosphorylating and activating MAP3K5/ASK1. Acts as a regulator of cell cycle, notably by mediating phosphorylation of CDC25B, promoting localization of CDC25B to the centrosome and the spindle poles during mitosis. Plays a key role in cell proliferation. Required for proliferation of embryonic and postnatal multipotent neural progenitors. Phosphorylates and inhibits BCL2L14. Also involved in the inhibition of spliceosome assembly during mitosis by phosphorylating ZNF622, thereby contributing to its redirection to the nucleus. May also play a role in primitive hematopoiesis.

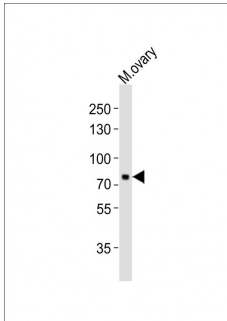
Overview

Product Name	Anti-(Mouse) Melk Antibody (C-term)
Reactive Species	Mouse
Description	Boster Bio Anti-(Mouse) Melk Antibody (C-term) (Catalog # M04038). Tested in WB, Flow Cytometry application(s). This antibody reacts with Mouse.
Application	Flow Cytometry, WB
Clonality	Polyclonal
Formulation	Purified polyclonal antibody supplied in PBS with 0.09% (W/V) sodium azide.
Storage Instructions	Maintain refrigerated at 2-8°C for up to 2 weeks. For long-term storage, store at -20°C in small aliquots to prevent freeze-thaw cycles.
Host	Rabbit
Uniprot ID	Q61846

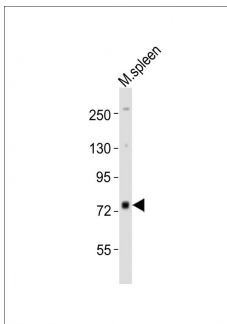
Technical Details

Immunogen	This mouse Melk antibody is generated from a rabbit immunized with a KLH conjugated synthetic peptide between 434-468 amino acids from the C-terminal region of mouse Melk.
Predicted Reactive Species	Bovine, Rabbit
Isotype	Rabbit IgG
Purification	This antibody is purified through a protein A column, followed by peptide affinity purification.
Suggested Dilutions	WB: 1:1000 FC: 1:25

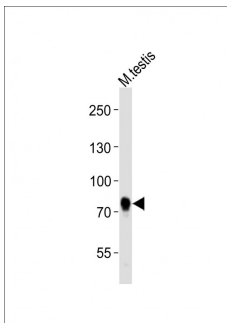
Anti-(Mouse) Melk Antibody (C-term) (M04038) Images



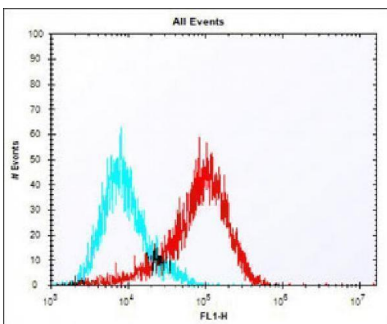
Anti-Melk Antibody (C-term) at 1:1000 dilution + mouse ovary lysates. Lysates/proteins at 20 µg per lane. Secondary Goat Anti-Rabbit IgG, (H+L), Peroxidase conjugated at 1/10000 dilution. Predicted band size : 73 kDa. Blocking/Dilution buffer: 5% NFDm/TBST.



Anti-Melk Antibody (C-term) at 1:2000 dilution + mouse spleen lysates. Lysates/proteins at 20 µg per lane. Secondary Goat Anti-Rabbit IgG, (H+L), Peroxidase conjugated at 1/10000 dilution. Predicted band size : 73 kDa. Blocking/Dilution buffer: 5% NFDm/TBST.



Anti-Melk Antibody (C-term) at 1:1000 dilution + mouse testis lysates. Lysates/proteins at 20 µg per lane. Secondary Goat Anti-Rabbit IgG, (H+L), Peroxidase conjugated at 1/10000 dilution. Predicted band size : 73 kDa. Blocking/Dilution buffer: 5% NFDm/TBST.



Overlay histogram showing MCF-7 cells stained with M04038 (red line). The cells were fixed with 2% paraformaldehyde (10 min) and then permeabilized with 90% methanol for 10 min. The cells were then incubated in 2% bovine serum albumin to block non-specific protein-protein interactions followed by the antibody (M04038, 1:25 dilution) for 60 min at 37°C. The secondary antibody used was Alexa Fluor® 488 goat anti-rabbit IgG (H+L) at 1/400 dilution for 40 min at 37°C. Isotype control antibody (blue line) was rabbit IgG1 (1g/1x10⁶ cells) used under the same conditions. Acquisition of >10,000 events was performed.

Submit a product review to [Biocompare.com](https://www.biocompare.com)

Submit a review of this product to [Biocompare.com](https://www.biocompare.com) to receive a \$20 Amazon.com giftcard! Your reviews help your fellow scientists make the right decisions. Thank you for your contribution.



Anti-(Mouse) Melk Antibody (C-term)

For Research Use Only. Not for use in diagnostic procedures.