

## Anti-TOMM20/Tom20 Rabbit Monoclonal Antibody

Catalog Number: M04039

### About TOMM20

Plays a major role in tight junction-specific obliteration of the intercellular space.

### Overview

|                      |  |
|----------------------|--|
| Product Name         | Anti-TOMM20/Tom20 Rabbit Monoclonal Antibody   |
| Reactive Species     | Human, Mouse, Rat  |
| Description          | Boster Bio Anti-TOMM20/Tom20 Rabbit Monoclonal Antibody catalog # M04039. Tested in WB, IHC, ICC/IF, Flow Cytometry applications. This antibody reacts with Human, Mouse, Rat. |
| Application          | Flow Cytometry, IF, IHC, ICC, WB   |
| Clonality            | Monoclonal EOC-20  |
| Formulation          | Rabbit IgG in phosphate buffered saline, pH 7.4, 150mM NaCl, 0.02% sodium azide and 50% glycerol, 0.4-0.5mg/ml BSA.  |
| Storage Instructions | Store at -20°C for one year. For short term storage and frequent use, store at 4°C for up to one month. Avoid repeated freeze-thaw cycles.                                     |
| Host                 | Rabbit   |
| Uniprot ID           | Q15388   |

### Technical Details

|                     |   |
|---------------------|---|
| Immunogen           | A synthesized peptide derived from human TOMM20   |
| Isotype             | Rabbit IgG  |
| Form                | Liquid  |
| Concentration       | Actual concentration vary by lot. Use suggested dilution ratio to decide dilution procedure.  |
| Purification        | Affinity-chromatography   |
| Suggested Dilutions | <p>Dilute the sample so that the expected range of concentrations fall within the detection range of this kit.</p> <p>If the expected range of concentration is unknown, a pilot test should be conducted to decide the optimal dilution ratio for your samples.</p> <p>Some PubMed article(s) citing the expression level of this target are as follows:</p> <p>Boster Bio's internal QC testing used:</p> <p>WB 1:500-1:2000<br/>IHC 1:50-1:200<br/>ICC/IF 1:50-1:200</p> |

|  |          |
|--|----------|
|  | FC 1:100 |
|--|----------|

## Anti-TOMM20/Tom20 Rabbit Monoclonal Antibody (M04039) Images

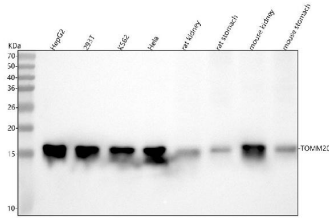


Figure 1. Western blot analysis of TOMM20/Tom20 using anti-TOMM20/Tom20 antibody (M04039).

Electrophoresis was performed on a 5-20% SDS-PAGE gel at 70V (Stacking gel) / 90V (Resolving gel) for 2-3 hours. The sample well of each lane was loaded with 30 ug of sample under reducing conditions.

Lane 1: human HepG2 whole cell lysates,

Lane 2: human 293T whole cell lysates,

Lane 3: human K562 whole cell lysates,

Lane 4: human Hela whole cell lysates,

Lane 5: rat kidney tissue lysates,

Lane 6: rat stomach tissue lysates,

Lane 7: mouse kidney tissue lysates,

Lane 8: mouse stomach tissue lysates.

After electrophoresis, proteins were transferred to a nitrocellulose membrane at 150 mA for 50-90 minutes.

Blocked the membrane with 5% non-fat milk/TBS for 1.5

hour at RT. The membrane was incubated with rabbit anti-

TOMM20/Tom20 antigen affinity purified monoclonal

antibody (Catalog # M04039) at 1:500 overnight at 4°C,

then washed with TBS-0.1%Tween 3 times with 5 minutes

each and probed with a goat anti-rabbit IgG-HRP secondary

antibody at a dilution of 1:5000 for 1.5 hour at RT. The

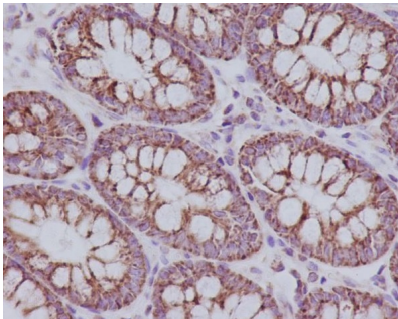
signal is developed using an Enhanced Chemiluminescent

detection (ECL) kit (Catalog # EK1002) with Tanon 5200

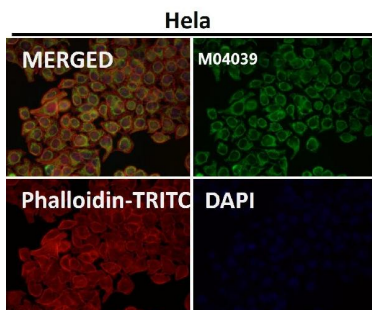
system. A specific band was detected for TOMM20/Tom20 at

approximately 16 kDa. The expected band size for

TOMM20/Tom20 is at 16 kDa.

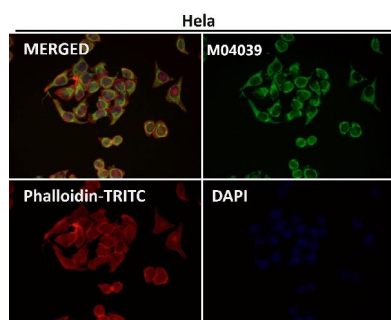


Immunohistochemical analysis of paraffin-embedded human colon, using TOMM20 Antibody.

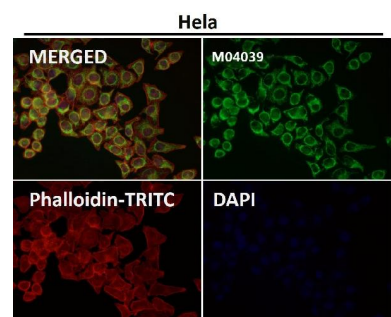


Immunofluorescent analysis using the Antibody at 1:50 dilution.

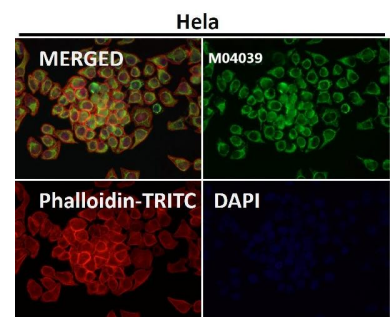
Immunofluorescent analysis using the Antibody at 1:150



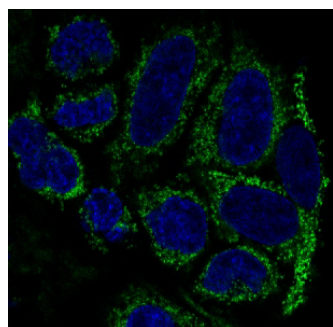
dilution.



Immunofluorescent analysis using the Antibody at 1:500 dilution.



Immunofluorescent analysis using the Antibody at 1:50 dilution.



Immunofluorescent analysis of HeLa cells, using TOMM20 Antibody .

**Submit a product review to Biocompare.com**

Submit a review of this product to Biocompare.com to receive a \$20 Amazon.com giftcard! Your reviews help your fellow scientists make the right decisions. Thank you for your contribution.



Anti-TOMM20/Tom20 Rabbit Monoclonal Antibody